



HILTI CONCRETE SENSORS

Technical Summary



CONTENTS

Strength / Maturity	3
General	3
Hilti Concrete Sensors Lab Services	3
Temperature	3
Instructions	4
Sensors	4
Gateway	5
Hilti Concrete Sensors Hardware & Software	6
Limitations and Other Important Information	6

STRENGTH / MATURITY

General

Hilti Concrete Sensors enables contractors to monitor the in-situ strength of concrete in real-time.

When concrete ingredients are mixed with water, the mixture begins to set and gain compressive strength, also known as “curing”. The compressive strength is typically measured in either pounds per square inch (PSI) or megapascals (MPa). The warmer the ambient conditions, the faster it will gain strength. The cooler the ambient conditions, the slower it will gain strength.

The term “maturity” refers to strength gain over a period of time. The industry standard cure time to reach the minimum design strength is 28 days.

For cast-in-place concrete on a jobsite, it can be beneficial to monitor the in-situ strength, not only to help ensure proper curing, but also to schedule work as efficiently as possible. For any strength data reported in the Hilti Concrete Sensors software, it’s the discretion of the customer and appropriate project stakeholders to make decisions for the project based on this information.

Hilti Concrete Sensors Lab Services

The most widely accepted industry standard to monitor in-situ strength is ASTM C1074 Maturity Method. This standard requires an upfront “calibration” test for each unique mix design. There are two types of tests within this standard. The Equivalent Age (aka Arrhenius equation) test requires batching, casting, curing and crushing (aka breaking) cylinder and cube specimens, within a cure time of 28 days. Cylinders are cured at room temperature and cubes are separated into groups and cured at a minimum of 3 different temperatures. This is to determine the temperature sensitivity based on the chemistry of the mix design. Hilti Concrete Sensors performs the Equivalent Age test, but at 4 different temperatures, in order to increase accuracy. The less comprehensive Time-Temperature (aka Nurse Saul) test requires batching, casting, curing and crushing only cylinders, which are only cured at 1 temperature and is therefore more limited in accuracy when the in-situ concrete temperatures on the project experience fluctuations.

This upfront testing requires our team to work with the appropriate project stakeholders to confirm mix design batching instructions and list of materials and then obtain those materials to conduct the 28-day test. Once the test is completed, the mix design ID number is added to our in-app library under the supplier’s company name.

To confirm accuracy, it’s recommended by ASTM to conduct a verification exercise consisting of a project stakeholder in the field adding sensors to typical cylinders being cast onsite by the project’s third party lab technician, so the strength data reported in the app can be compared to the third party lab’s physical cylinder break results.

It’s important to note, when a significant change is made by the supplier to a mix design already in our in-app library, the strength data reported by our software will not be accurate and new testing (“calibration”) will be required.

TEMPERATURE

Hilti Concrete Sensors enables contractors to monitor the in-situ temperature of concrete in real-time.

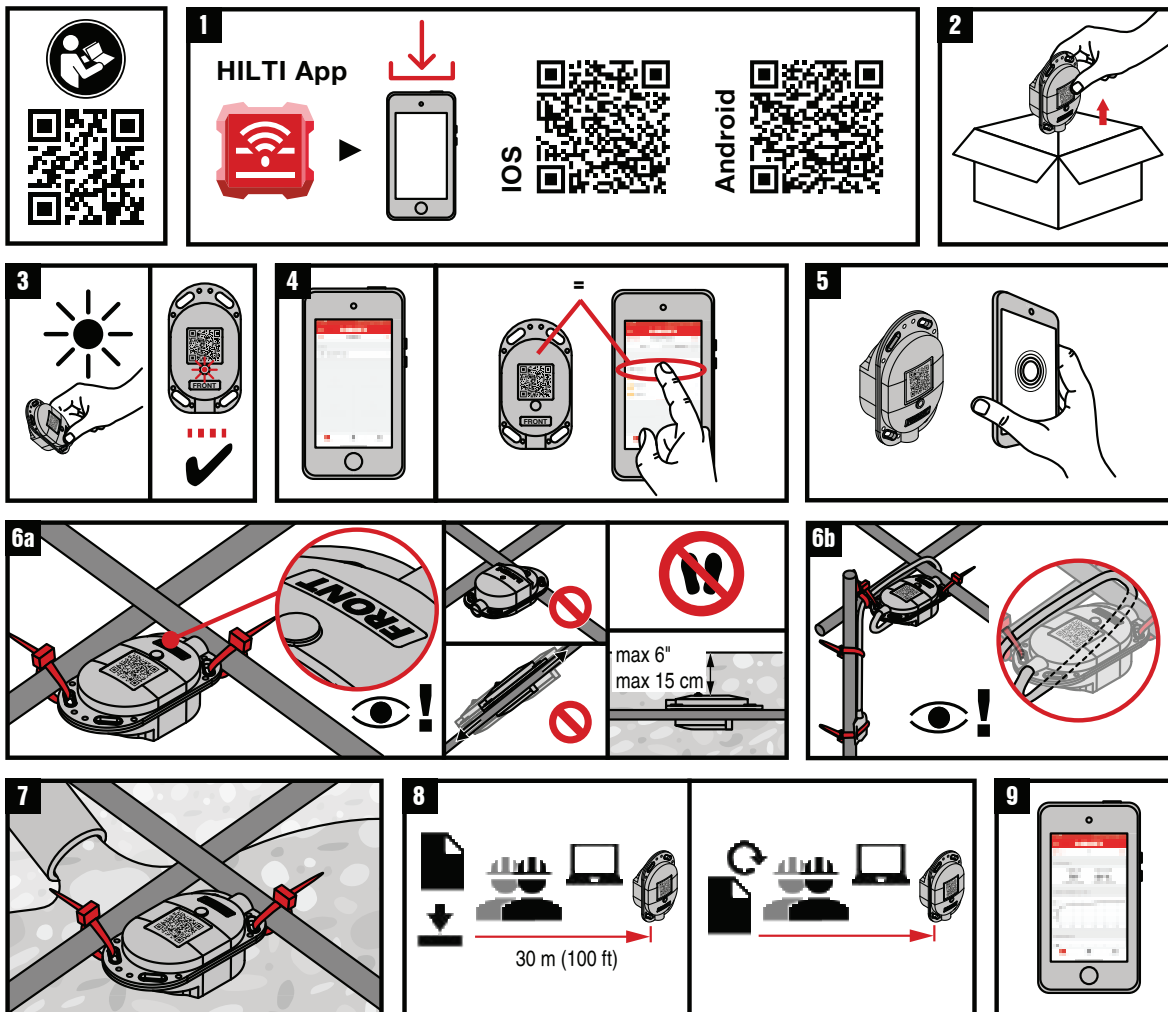
Monitoring internal concrete curing temperature (and temperature differentials between multiple points within the concrete) can help ensure proper curing and achievement of the minimum design strength. It also helps ensure compliance with building code, specifications, industry standards and thermal control plans. Thermal control plans are guidelines for contractors to execute proper curing and are typically written by an engineer.

One example of an industry standard contractors must comply with, is ACI 306R (Cold Weather), requiring them to manage the curing process in such a way that the internal concrete curing temperature stays within certain thresholds.

Another example is ACI 207.1 / ACI 116 (Mass Concrete) which requires contractors to manage the curing process for extra thick (typically 3+ feet) concrete in such a way to prevent the temperature differential from center to surface from exceeding a specified threshold and to prevent the center temperature from exceeding a specified threshold. Management of the mass concrete curing process might include a specialized mix design, cooling the interior of the concrete or warming the exterior of the concrete.

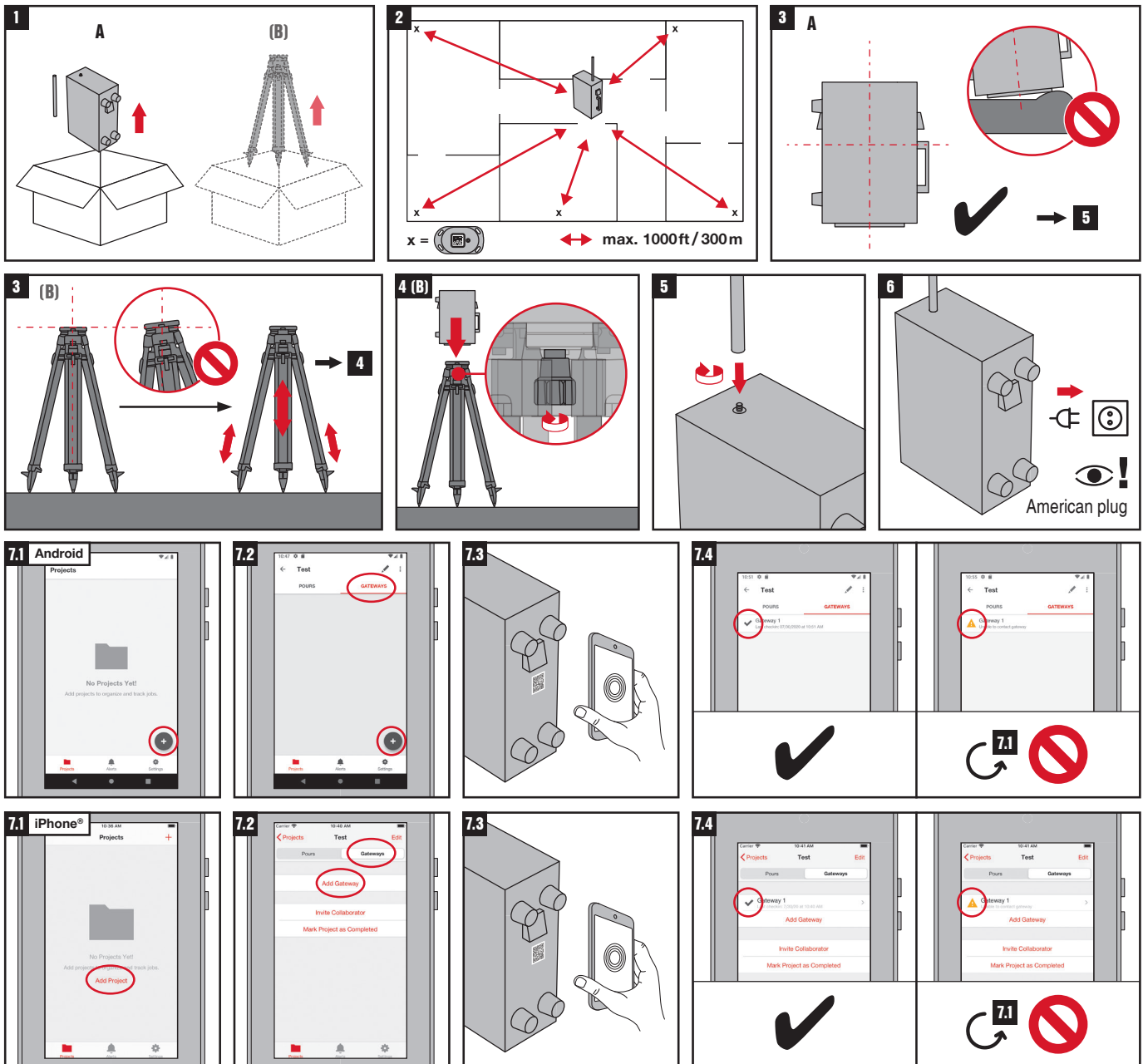
Our sensors record and store a temperature datapoint every 15 minutes which is used for the temperature reports/alerts and for calculating the strength data as referenced above.

Sensor instructions



- Step 1**
Download Hilti Concrete Sensors app (available from iOS and Android)
- Step 2**
Remove sensors from their packaging, which you intend to install in your upcoming concrete pour.
- Step 3**
Activate sensors by exposing them to a bright light. If red indicator LED isn't blinking, try using a flashlight or direct sunlight.
- Step 4**
Follow in-app instructions to add a Project and respective concrete Pours. Including the Pour name and date. (Android: Use plus (+) sign to add) Check pour area on floorplan and decide on intended sensor locations. Label surface of each sensor with its intended name. Clearly mark floorplan hardcopy to show each sensor name/location. (Optional: see in app instructions on how to add the floorplan and pin each sensor location).
- Step 5**
Scan QR code, enter sensor name and Save.
- Step 6a**
Secure sensor to rebar or mesh at intersection for stability and fasten at minimum two points. **IMPORTANT:** Ensure QR code is facing upwards. Be careful not to step on sensors. Sensor can be no deeper than 15cm from surface of concrete.
- Step 6b**
For sensors with cable and temperature probe ("B-side"), ensure the large end (radio transmitter) is near the concrete surface (max depth for transmitter is 15cm). Ensure cable is looped (see image 9b) around rebar in such a way to avoid pull-out during concrete pour. Fasten temperature probe ("B-side") at intended monitoring point and secure cable to rebar.
- Step 7**
Pour Concrete.
- Step 8**
To call up the data, bring your mobile device closer to the sensor at approx. 30 m.
- Step 9**
To update the data, approach the sensor again. Repeat the retrieval for all sensors used.
- Step 9**
Connect to sensors as often as needed to monitor progress. Sensors store all data onboard for life of battery (6 months) and will also be stored in the mobile app once collected.

Gateway instructions



Step 1

Remove gateway and antenna from packaging. If using tripod, remove from packaging.

Step 2

Determine best location for gateway with lowest likelihood of sustaining damage, near consistent power, no more than 1,000ft from intended sensor locations (always follow the instructions provided with the gateway).

Step 3

If not using tripod, determine safe flat dry surface to place gateway. If using tripod, set up level and plumb and secure legs and feet.

Step 4

Fasten gateway to tripod using provided bolt.

Step 5

Screw on antenna to top of gateway.

Step 6

Plug in gateway.

Step 7.1

Open mobile app and select project (or add new project).

Step 7.2

Go to Add Gateway

Step 7.3

Scan QR code on back of gateway and enter desired gateway name and select Save.

Step 7.4

After a few minutes, a green check should appear in the app — if not, check both power supply and cell coverage for the area and try again. If green check cannot be achieved, please contact Hilti.

HILTI CONCRETE SENSORS HARDWARE & SOFTWARE

Sensors

Sensor Models			
Sensor Model	Data Collection Method	Data Measured / Reported	Installation Max Depth
HCS T1	Bluetooth	Strength, Temperature	15 cm
HCS T1-B3	Bluetooth	Strength, Temperature	1 m
HCS T1-B8	Bluetooth	Strength, Temperature	2,5 m
HCS T1-B15	Bluetooth	Strength, Temperature	4,5 m
HCS T2	Long Range	Strength, Temperature	15 cm
HCS T2-B3	Long Range	Strength, Temperature	1 m
HCS T2-B8	Long Range	Strength, Temperature	2,5 m
HCS T2-B15	Long Range	Strength, Temperature	4,5 m

LIMITATIONS AND OTHER IMPORTANT INFORMATION

- For a typical slab placement size (approx 1.350m²), a quantity of 5 sensors will typically provide an accurate reading of the entire area (1 sensor per corner, 1 in center). For smaller or larger slab placements, fewer or more sensors may be needed. Engineer of Record (EOR) should always be consulted.
- Redundant sensors at each location are not required, unless contained in project specifications/drawings/thermal control plan.
- Wireless signal strength can be affected by damage to a sensor, distance, sensor depth, formwork, standing water, ice, equipment, materials, etc.
- When none of the above-reference factors are affecting the wireless signal, Bluetooth range is up to 30m from mobile device and Long Range is up to 300m from the gateway.



Hilti Corporation | 9494 Schaan | Liechtenstein
P: +423 234 2111
www.hilti.group