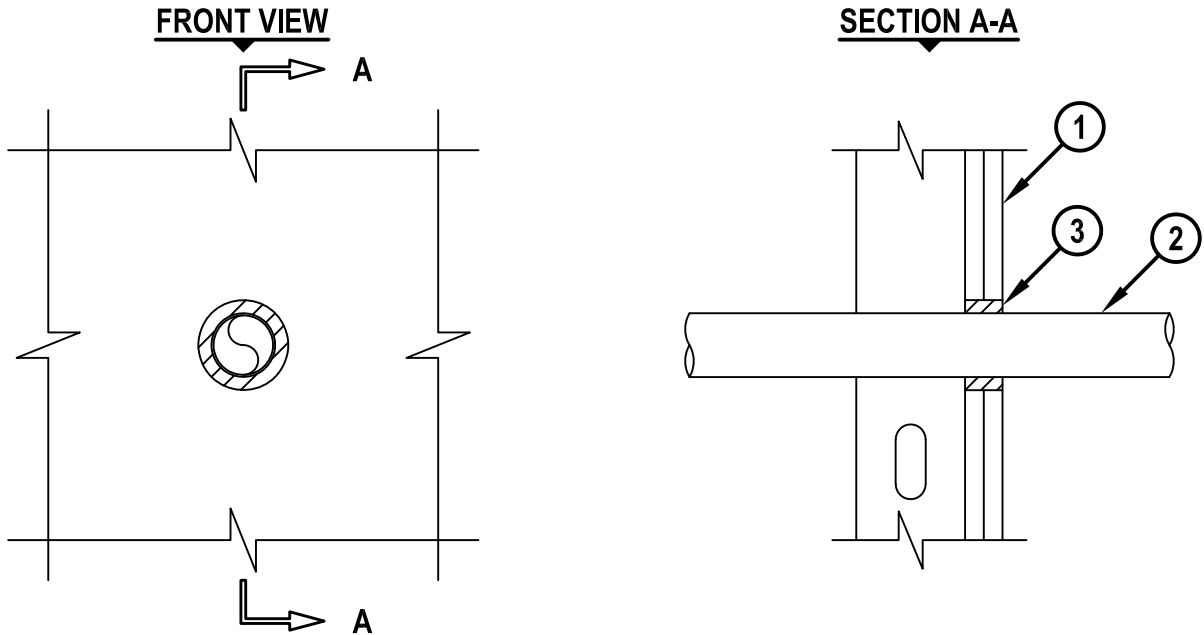


UL/cUL SYSTEM NO. W-L-1551

METALLIC PIPE THROUGH GYPSUM WALL ASSEMBLY

F-RATING = 1-HR.

T-RATING = 0-HR.



WL1551a.111418

1. GYPSUM WALL ASSEMBLY (UL DESIGN NO. V497) (1-HR. FIRE-RATING) TO INCLUDE THE FOLLOWING CONSTRUCTION FEATURES :
 - A. MINIMUM 3-5/8" WIDE STEEL STUD FRAMING (MIN. 25 GA.).
 - B. GYPSUM BOARD AS SPECIFIED IN UL DESIGN NO. V497.
2. PENETRATING ITEM TO BE ONE OF THE FOLLOWING :
 - A. MAXIMUM 2" NOMINAL DIAMETER STEEL PIPE (SCHEDULE 10 OR HEAVIER).
 - B. MAXIMUM 2" NOMINAL DIAMETER CAST IRON PIPE.
 - C. MAXIMUM 2" NOMINAL DIAMETER STEEL CONDUIT OR EMT.
 - D. MAXIMUM 2" NOMINAL DIAMETER COPPER PIPE OR TUBING.
3. MINIMUM 1-1/4" DEPTH HILTI FS-ONE MAX INTUMESCENT FIRESTOP SEALANT INSTALLED FROM ONE OR BOTH SIDES OF WALL ASSEMBLY, FLUSH WITH BOTH SIDES OF WALL ASSEMBLY.

NOTES : 1. MAXIMUM DIAMETER OF OPENING = 3".
2. ANNULAR SPACE = MINIMUM 1/4", MAXIMUM 5/8".



HILTI, Inc.
Plano, Texas USA (800) 879-8000

Sheet	1 of 1
Scale	5/32" = 1"
Date	Nov. 14, 2018

Drawing No.

WL
1551a

Saving Lives through Innovation and Education