

# FIRESTOP METALLIC SLEEVE CFS-MS

## Product description

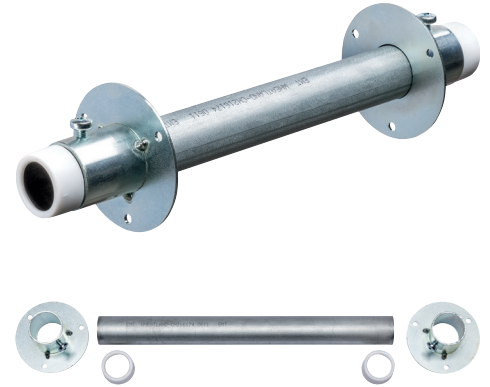
- 1" diameter conduit sleeve with bushing and rigid attachment

## Applications

- Cable penetrations for single and bundled cables
- For use on concrete, masonry and drywall
- Suitable for small circular openings in walls
- Electrical, low voltage / mid voltage and telecom

## Features

- Quick and easy to install for cable penetrations requiring a sleeved opening
- Satisfies most specification requirements calling for a sleeved cable application
- Re-penetrable
- To be combined with multiple Hilti firestop solutions. Check UL systems available
- For use in rated and non-rated barriers
- Up to 100% cable fill when used with CFS-D Firestop Disc
- Buy American compliant



---

## Technical data

Complimentary products	Putty Stick CP 618 FS-ONE MAX sealant Firestop Cable Disk CFS-D
Inside diameter (input)	0.976 in
Intumescent	No
Length (input)	11.87 in
Outside diameter (input)	1.16 in
Inside diameter	0.98 in
Length	11-7/8 in

---