

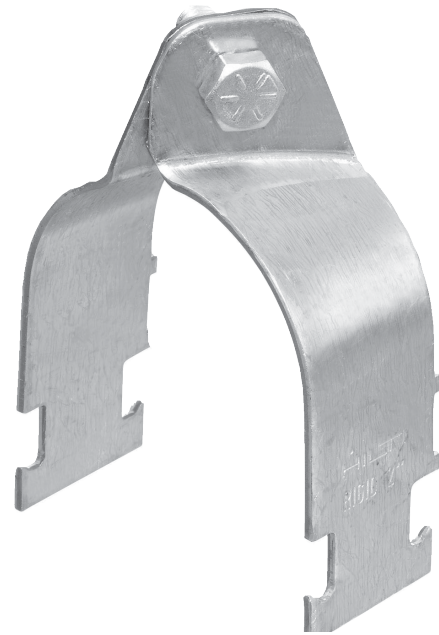
MH-R45 STRUT CLAMPS — RIGID

Product Features

- Tightening screw at 45° angle for easy access
- Sized for rigid pipes
- One piece out of the box, simply break apart and install
- Innovative design requires no nuts for fast and easy assembly

Material Specifications

Material	Carbon steel
Finish	Pre-galvanized
Conforms with	<ul style="list-style-type: none"> • Federal specifications WW-H-171E (Type 59) • Manufacturers Standardization Society MSS-SP-58 (Type 59)



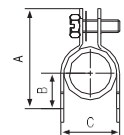
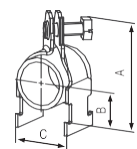
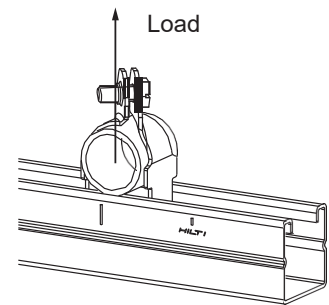
Ordering Information / Technical Data

Description	Load Rating (lb) ¹	Box Qty	Item No.
MH-R45 1/2" PG	167	100	2008810
MH-R45 3/4" PG	167	100	2008811
MH-R45 1" PG	267	100	2008812
MH-R45 1-1/4" PG	333	50	2008813
MH-R45 1-1/2" PG	333	50	2008814
MH-R45 2" PG	333	50	2008815
MH-R45 2-1/2" PG	400	25	2008816
MH-R45 3" PG	400	25	2008817
MH-R45 4" PG	400	25	2008818
MH-R45 6" PG	400	10	2008819
MH-R45 8" PG	400	10	2008820

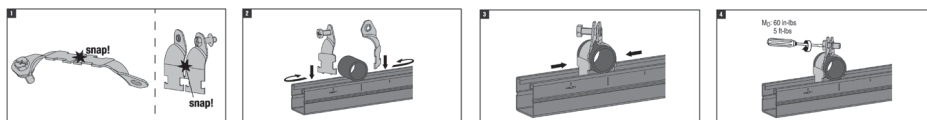
¹ Load rating is defined per CSA C22.2 No.18.4-15 criteria

Technical Data

Designation	Bolt Diameter x Length	Wrench Size	Tightening Torque (in-lb)	Material Thickness Gauge	A Dimension (in)	B Dimension (in)	C Dimension (in)
MH-R45 1/2" PG	5/16"-18 UNC x 3/4"	1/2"	60	16	2.15	0.71	0.96
MH-R45 3/4" PG	5/16"-18 UNC x 3/4"	1/2"	60	16	2.35	0.82	1.17
MH-R45 1" PG	5/16"-18 UNC x 3/4"	1/2"	60	14	2.68	0.95	1.46
MH-R45 1-1/4" PG	5/16"-18 UNC x 1"	1/2"	60	14	3.08	1.11	1.81
MH-R45 1-1/2" PG	5/16"-18 UNC x 1"	1/2"	60	14	3.28	1.23	2.05
MH-R45 2" PG	5/16"-18 UNC x 1"	1/2"	60	14	3.73	1.47	2.52
MH-R45 2-1/2" PG	3/8"-16 UNC x 1-1/4"	9/16"	60	12	4.32	1.70	3.09
MH-R45 3" PG	3/8"-16 UNC x 1-1/4"	9/16"	60	12	5.01	2.03	3.71
MH-R45 4" PG	3/8"-16 UNC x 1-1/4"	9/16"	60	12	6.04	2.54	4.71
MH-R45 6" PG	3/8"-16 UNC x 1-1/4"	9/16"	60	10	8.03	3.55	6.89
MH-R45 8" PG	3/8"-16 UNC x 1-1/4"	9/16"	60	10	10.26	4.54	8.88



Installation Instructions



ÉTRIERS À TRAVERSE MH-R45 — RIGIDES

Caractéristiques du produit

- Vis de serrage à un angle de 45° pour un accès facile
- Dimensionné pour les tuyaux rigides
- Une seule pièce dans la boîte, il suffit de la démonter et de l'installer
- La conception innovante ne nécessite aucun écrou pour un montage rapide et facile

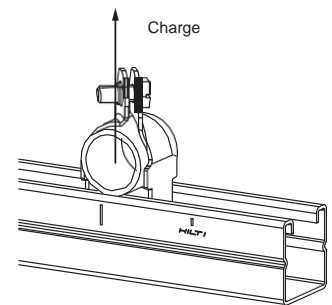


Spécifications des matériaux

Matériau	Acier au carbone
Finition	Pré-galvanisé
Satisfait à	<ul style="list-style-type: none"> • Spécifications fédérales WW-H-171E (Type 59) • ManufacturersStandardizationSociety MSS-SP-58 (Type 59)

Informations de commande / Données techniques

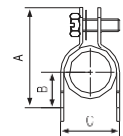
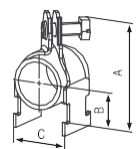
Description	Taux de charge (lb) ¹	Qté par boîte	No. d'article
MH-R45 1/2" PG	167	100	2008810
MH-R45 3/4" PG	167	100	2008811
MH-R45 1" PG	267	100	2008812
MH-R45 1-1/4" PG	333	50	2008813
MH-R45 1-1/2" PG	333	50	2008814
MH-R45 2" PG	333	50	2008815
MH-R45 2-1/2" PG	400	25	2008816
MH-R45 3" PG	400	25	2008817
MH-R45 4" PG	400	25	2008818
MH-R45 6" PG	400	10	2008819
MH-R45 8" PG	400	10	2008820



1 Le taux de charge est défini par les critères de la norme CSA C22.2 No.18.4-15

Données techniques

Désignation	Diamètre du boulon x longueur	Taille de clé	Couple de serrage (po-lb)	Mesure de l'épaisseur de matériau	A Dimension (po)	B Dimension (po)	C Dimension (po)
MH-R45 1/2" PG	5/16"-18 UNC x 3/4"	1/2"	60	16	2,15	0,71	0,96
MH-R45 3/4" PG	5/16"-18 UNC x 3/4"	1/2"	60	16	2,35	0,82	1,17
MH-R45 1" PG	5/16"-18 UNC x 3/4"	1/2"	60	14	2,68	0,95	1,46
MH-R45 1-1/4" PG	5/16"-18 UNC x 1"	1/2"	60	14	3,08	1,11	1,81
MH-R45 1-1/2" PG	5/16"-18 UNC x 1"	1/2"	60	14	3,28	1,23	2,05
MH-R45 2" PG	5/16"-18 UNC x 1"	1/2"	60	14	3,73	1,47	2,52
MH-R45 2-1/2" PG	3/8"-16 UNC x 1-1/4"	9/16"	60	12	4,32	1,70	3,09
MH-R45 3" PG	3/8"-16 UNC x 1-1/4"	9/16"	60	12	5,01	2,03	3,71
MH-R45 4" PG	3/8"-16 UNC x 1-1/4"	9/16"	60	12	6,04	2,54	4,71
MH-R45 6" PG	3/8"-16 UNC x 1-1/4"	9/16"	60	10	8,03	3,55	6,89
MH-R45 8" PG	3/8"-16 UNC x 1-1/4"	9/16"	60	10	10,26	4,54	8,88



Instructions d'installation

