

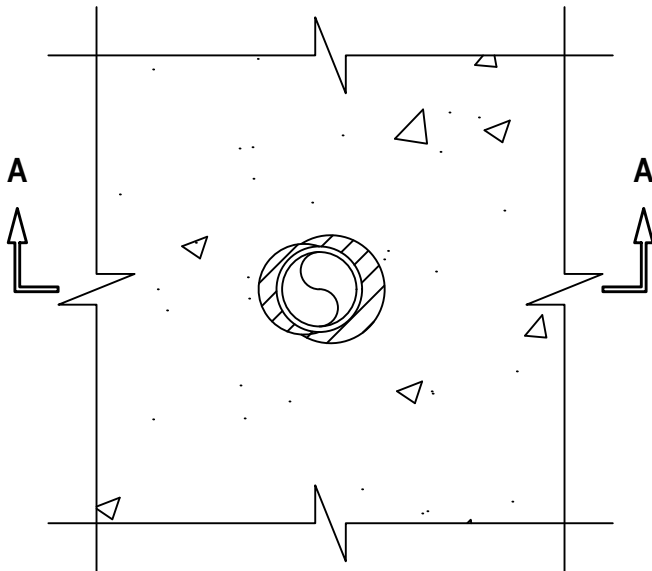
**PLASTIC PIPE THROUGH CONCRETE FLOOR/WALL OR BLOCK WALL**

F-RATING = 2-HR.

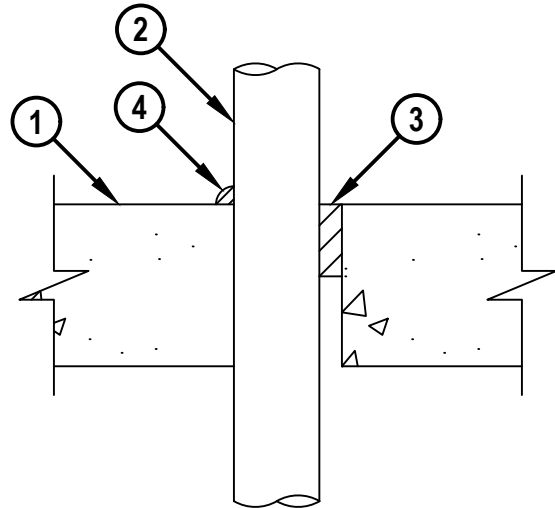
FT, FH, AND FTH-RATINGS = 0-HR.

NOTE : TESTED WITH A 50 Pa PRESSURE DIFFERENTIAL

**TOP VIEW**



**SECTION A-A**



cUL CAJ2900a.092220

1. CONCRETE FLOOR OR WALL ASSEMBLY (2-HR. FIRE-RATING) :
  - A. LIGHTWEIGHT OR NORMAL WEIGHT CONCRETE FLOOR OR WALL (MINIMUM 4-1/2" THICK).
  - B. ANY UL/cUL CLASSIFIED CONCRETE BLOCK WALL.
2. PENETRATING ITEM TO BE ONE OF THE FOLLOWING :
  - A. MAXIMUM 2" NOMINAL DIAMETER PVC PLASTIC PIPE (CELLULAR CORE) (SCH 40) (CLOSED OR VENTED PIPING SYSTEM).
  - B. MAXIMUM 2" NOMINAL DIAMETER CPVC PLASTIC PIPE (SCH 40) (CLOSED PIPING SYSTEM).
  - C. MAXIMUM 2" NOMINAL DIAMETER XFR PVC PLASTIC PIPE (SCH 40) (CLOSED OR VENTED PIPING SYSTEM).
  - D. MAXIMUM 2" NOMINAL DIAMETER NAPSYS-HR PVC PIPE (SCH. 40) (CLOSED OR VENTED PIPING SYSTEM).
3. MINIMUM 2" DEPTH HILTI FS-ONE MAX INTUMESCENT FIRESTOP SEALANT FLUSH WITH TOP SURFACE OF CONCRETE FLOOR OR BOTH SURFACES OF A WALL.
4. MINIMUM 1/2" BEAD HILTI FS-ONE MAX INTUMESCENT FIRESTOP SEALANT APPLIED AT POINT OF CONTACT.

**NOTES :** 1. MAXIMUM DIAMETER OF OPENING = 3-1/2".  
 2. ANNULAR SPACE = MINIMUM 0", MAXIMUM 1-1/4".  
 3. HILTI FS-ONE MAX INTUMESCENT FIRESTOP SEALANT IS REQUIRED ON BOTH SIDES OF A WALL.



HILTI, Inc.  
 Plano, Texas USA (800) 879-8000

Sheet	1 of 1
Scale	3/16" = 1"
Date	Oct. 08, 2020

Drawing No.  
**cUL**  
**CAJ2900a**