

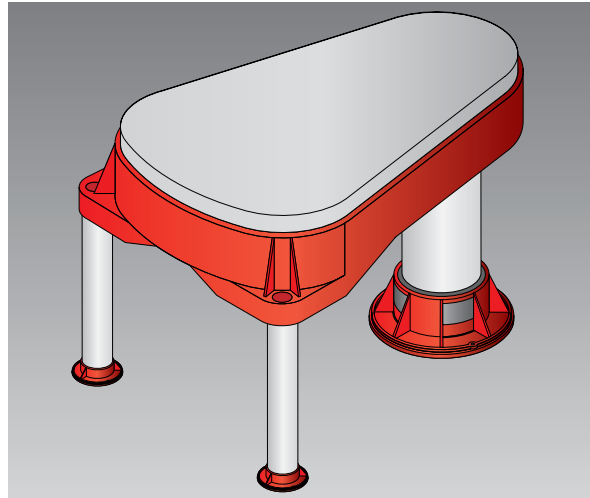
## Tub Box Kit (CP 681)

### Product description

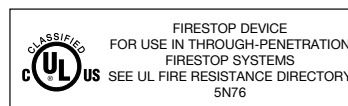
- Structurally stable during concrete pouring
- Assembles easily with solvent cement — no additional tools required
- Triangular shape makes working around rebar easy
- 3 fastening points instead of 4 reduces installation time
- Pre-cut to customer's height requirement upon request — helps reduce labor costs
- One system for all pipe materials, easy to choose and inspect
- Accepts a pass through 1-1/2" pipe (with a sealing bushing) or a standard 2" P-trap (direct connection to the coupling)

### Product features

- Sealing bushings available for standard schedule 40 pipe or thin wall piping
- Versatile CP 681 tub box kit allows sealing bushing to be installed from top or bottom



Technical Data	CP 681
Dimensions (LxWxH)	10-3/4" x 13" x slab thickness
Application dimension	Creates a 2-1/2" deep recess in the slab
Minimum slab thickness	4-1/2"
Intumescent activation	Approx. 375°F (190°C)
Expansion ratio (unrestricted)	1:10
Temperature resistance	Maximum 212°F (100°C)
Color	Red with white PVC legs and coupling
Storage	Store in dry location
<b>Tested in accordance with</b>	
• UL 1479 • ASTM E 814 • ASTM G21 • CAN/ULC-S115	



## Assembly and installation instructions for CP 681

### Notice

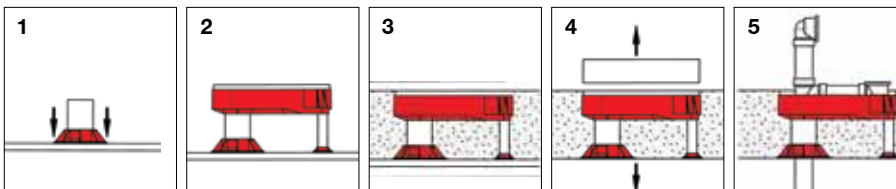
- Before handling, read Material Safety Data Sheet and product label for safe usage and health information.
- Instructions below are general guidelines — always refer to the applicable drawing in the UL Fire Resistance Directory or Hilti Firestop Systems Guide for complete installation information

### Instructions for use

1. Concrete on wood form — secure the coupling sleeve flange (the larger of the three flanges) to the floor deck using nails or screws.
2. Using standard solvent cement on both plastic surfaces, assemble the CP 681 Tub Box legs and sleeve to bottom of the Tub Box as follows:
  - Cement the two 3/4" PVC stabilizing legs to the matching connecting area on the bottom side of the CP 681 Tub Box
  - Cement the CP 681 Tub Box and larger PVC plastic sleeve to the connecting area on the bottom side of the CP 681 Tub Box
  - Secure the smaller leg flanges to the deck using nails or screws
3. Pour concrete to the proper height. CP 681 Tub Box assembly is pre-cut to the slab thickness.

4. After concrete is cured, remove the floor deck and foam insert. Remove pressure test cap before installing drain piping.
5. Install the tub drain/overflow assembly piping (plastic or brass) through the CP 681 Tub Box and plastic coupling. Insert proper elastomeric bushing into the bottom or top of the CP 681 Tub Box assembly around the drain pipe.

Note: Install bushing before final drain/overflow assembly if installing from the top side. Complete the installation by installing branch and trap piping.



**Hilti Firestop**  
Saving lives  
through innovation  
and education

**Hilti. Outperform. Outlast.**