

5.0 Installation System Hangers

MH-CSLR-LR Copper speed lock riser clamp – long hinged

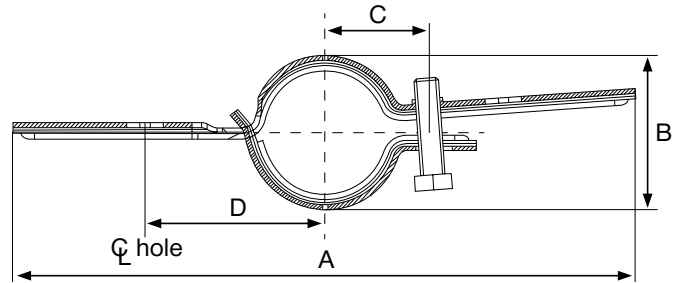
Product Features

- Long design to span larger openings; one bolt with no loose nut on backside
- Copper painted; sized to fit copper tubing and pipe
- Holes for wall stand-off applications



Material Specifications

Material	Carbon steel
Finish	Copper painted
Conforms with	<ul style="list-style-type: none"> • Federal specifications WW-H-171E (Type 8) • Manufacturers Standardization Society MSS-SP-58 (Type 8)
Installation	Install in accordance with MSS-SP-58



Ordering Information / Technical Data

Description	Allow. Load (lb) ¹	Bolt Diameter x Length	Wrench Size	Tightening Torque (ft-lb)	Height Dimension (in)	A Dimension (in)	B Dimension (in)	C Dimension (in)	D Dimension (in)	Material Thickness Gauge	Box Qty	Item No.
MH-CSLR-L 1" Copper	120	3/8"-16 UNC x 1 1/2"	9/16	19	1	9.0	1.6	1.3	2.5	14	25	2007555
MH-CSLR-L 1-1/4" Copper	150	3/8"-16 UNC x 1 1/2"	9/16	19	1	9.3	1.9	1.4	2.6	14	25	2007556
MH-CSLR-L 1-1/2" Copper	150	3/8"-16 UNC x 1 1/2"	9/16	19	1	9.6	2.1	1.6	2.8	14	25	2007557
MH-CSLR-L 2" Copper	150	3/8"-16 UNC x 1 1/2"	9/16	19	1-3/16"	10.3	2.8	1.9	3.1	12	1	2007558
		150	3/8"-16 UNC x 1 1/2"	9/16	19						25	3475945
MH-CSLR-L 2-1/2" Copper	300	3/8"-16 UNC x 1 1/2"	9/16	19	1-3/16"	10.9	3.3	2.2	3.4	12	1	2007559
		300	3/8"-16 UNC x 1 1/2"	9/16	19						25	3475946
MH-CSLR-L 3" Copper	300	1/2"-13 UNC x 2"	3/4	50	1-1/2"	12.1	3.9	2.7	4.1	11	1	2007560
		300	1/2"-13 UNC x 2"	3/4	50						25	3475947
MH-CSLR-L 4" Copper	300	1/2"-13 UNC x 2"	3/4	50	1-1/2"	13.2	4.9	3.2	4.6	11	1	2007561
		300	1/2"-13 UNC x 2"	3/4	50						25	3475948

¹ Based on a safety factor of 3 for all sizes except 2.3 for sizes 1" and 1-1/4" according to AISI 2007

Note: This clamp is not designed for corrosion or electrolysis resistance. Copper painting is for identification purposes only.

Installation Instructions

