

## 5.0 Installation System Hangers

### 5.4 Riser clamps

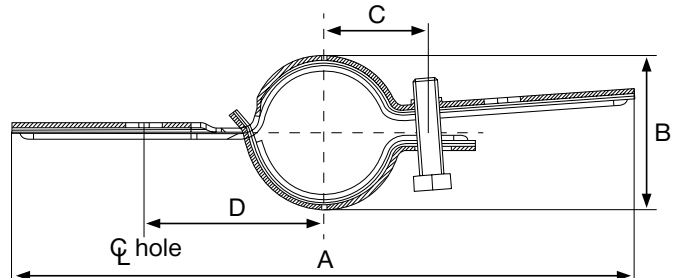
#### MH-SLR-LH Speed lock riser clamp — long hinged

##### Product Features

- Long design to span larger openings; single bolt threads directly into clamp
- Holes for wall stand-off applications
- Faster to install than traditional riser clamps; easy installation in tight spaces

##### Material Specifications

<b>Material</b>	Carbon steel
<b>Finish</b>	Electro-galvanized bolts Pre-galvanized clamps
<b>Conforms with</b>	<ul style="list-style-type: none"> <li>• Federal specifications WW-H-171E (Type 8)</li> <li>• Manufacturers Standardization Society MSS-SP-58 (Type 8)</li> </ul>
<b>Installation</b>	Install in accordance with MSS-SP-58



##### Ordering Information / Technical Data

Description	Allow. Load (lb) <sup>1</sup>	Bolt Diameter x Length	Wrench Size	Tightening Torque (ft-lb)	Height Dimension (in)	A Dimension (in)	B Dimension (in)	C Dimension (in)	D Dimension (in)	Material Thickness Gauge	Box Qty	Item No.
<b>MH-SLR-LH 1" PG</b>	255	3/8"-16 UNC x 1 1/2"	9/16	19	1	9.0	1.8	1.3	2.5	14	25	2007545
<b>MH-SLR-LH 1-1/4" PG</b>	255	3/8"-16 UNC x 1 1/2"	9/16	19	1	9.4	2.1	1.5	2.7	14	25	2007546
<b>MH-SLR-LH 1-1/2" PG</b>	255	3/8"-16 UNC x 1 1/2"	9/16	19	1	9.7	2.4	1.6	2.8	14	25	2007547
<b>MH-SLR-LH 2" PG</b>	255	3/8"-16 UNC x 1 1/2"	9/16	19	1-3/16"	10.3	3.0	1.9	3.1	12	1	2007548
	255	3/8"-16 UNC x 1 1/2"	9/16	19							25	3475936
<b>MH-SLR-LH 2-1/2" PG</b>	390	3/8"-16 UNC x 1 1/2"	9/16	19	1-3/16"	10.9	3.5	2.2	3.4	12	1	2007549
	390	3/8"-16 UNC x 1 1/2"	9/16	19							25	3475937
<b>MH-SLR-LH 3" PG</b>	530	1/2"-13 UNC x 2"	3/4	50	1-1/2"	12.1	4.2	2.7	4.1	11	1	2007550
	530	1/2"-13 UNC x 2"	3/4	50							25	3475938
<b>MH-SLR-LH 4" PG</b>	810	1/2"-13 UNC x 2"	3/4	50	1-1/2"	13.2	5.2	3.2	4.6	11	1	2007551
	810	1/2"-13 UNC x 2"	3/4	50							20	3475939

<sup>1</sup> Based on a safety factor of 3 for all sizes except 2.3 for sizes 1" and 1-1/4" according to AISI 2007

##### Installation Instructions

