

5.0 Installation System Hangers

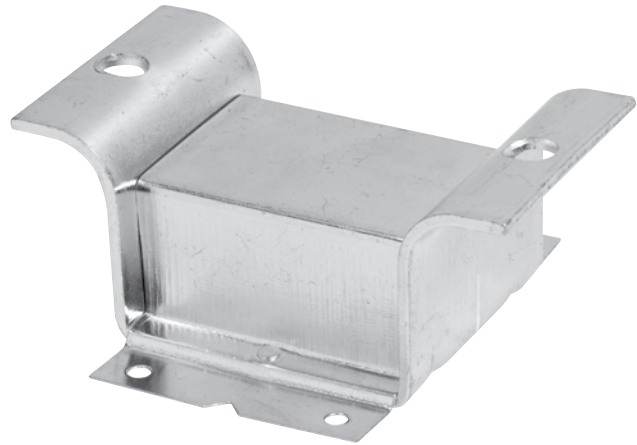
Concrete spot insert

Product Features

- Use as a structural attachment in concrete. Knockout helps keep interior empty during pour.

Material Specifications

Material and finish	Carbon Steel Electro-Galvanized meeting ASTM B633 SC3 Type I
Conforms with	Federal Specification WW-H-171 (Type 19) and Manufacturers Standardization Society ANSI/MSS-SP-58 (Type 18). Not UL or FM Listed
Installation	Install in accordance with ANSI/MSS-SP-58. Place knockout side down on form and nail in place. After concrete pour, knockout can be removed with a screwdriver. Rod should be threaded through the inset nut until it tightens against the top of the insert.

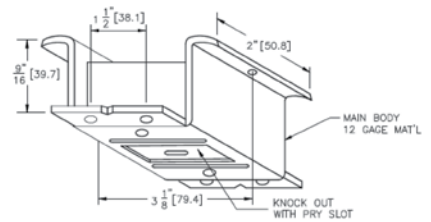


Ordering and Technical Information

Concrete Insert

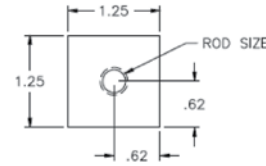
Description	Max. Allowable Tensile Load (lb) ¹	Qty	Item No.
Concrete Insert EG	600	25	3442103

¹ Based on a safety factor of 3



Square Nut for Insert

Description	Qty	Item No.
Insert Nut 1/4"	100	3448644
Insert Nut 3/8"	100	3448645
Insert Nut 1/2"	100	3448646
Insert Nut 5/8"	100	3448647



Note — Available on special order basis. Please contact Hilti for pricing and delivery. Not returnable.