

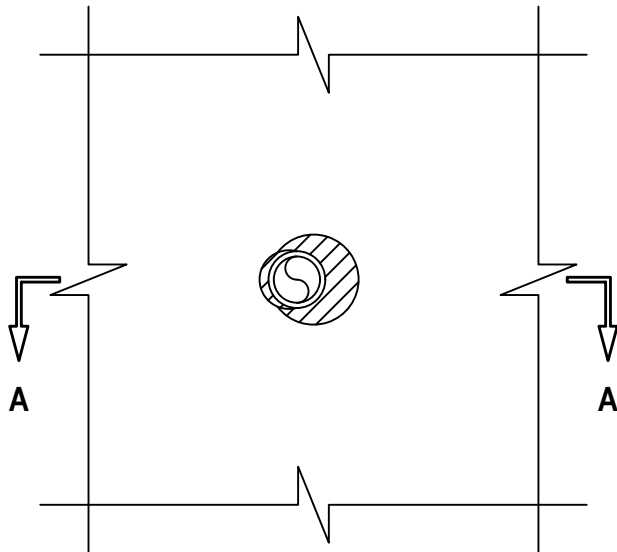
PLASTIC PIPE THROUGH WOOD FLOOR/CEILING ASSEMBLY

F-RATING = 1-HR.

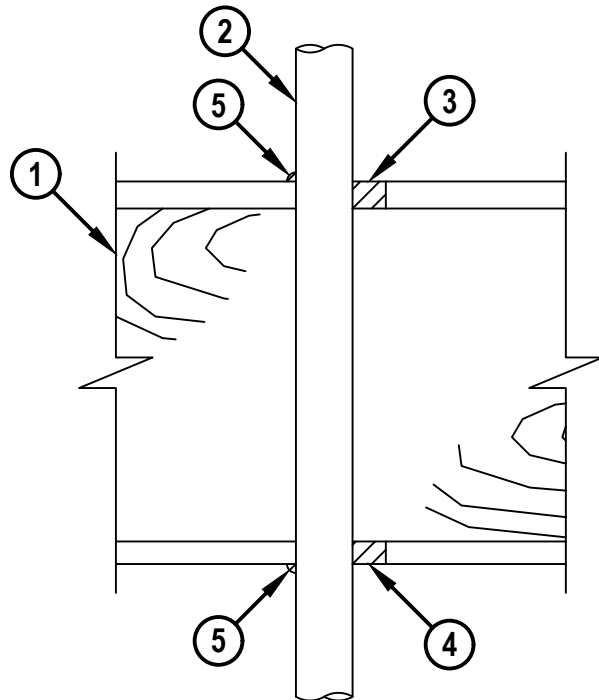
T-RATING = 1/4-HR., 3/4-HR., AND 1-HR. (SEE NOTE NO. 3 BELOW)

NOTE : TESTED WITH A 50 Pa PRESSURE DIFFERENTIAL

BOTTOM VIEW



SECTION A-A



cUL FC2517b.082721

1. WOOD FLOOR/CEILING ASSEMBLY (UL CLASSIFIED L500 SERIES) (1-HR. FIRE-RATING).
2. PENETRATING ITEM TO BE ONE OF THE FOLLOWING :
 - A. MAXIMUM 2" (63 MM OD) NOMINAL DIAMETER AQUATHERM GREENPIPE POLYPROPYLENE (PP-R) PLASTIC PIPE (SDR 7.4) (CLOSED OR VENTED PIPING SYSTEM).
 - B. MAXIMUM 2" (63 MM OD) NOMINAL DIAMETER NUPI AMERICAS NIRON POLYPROPYLENE (PP-RCT) PLASTIC PIPE (SDR 7.3) (CLOSED OR VENTED PIPING SYSTEM).
 - C. MAXIMUM 2" (51 MM OD) NOMINAL DIAMETER XFR POLYVINYL CHLORIDE (PVC) PIPE (SCHEDULE 40) (CLOSED OR VENTED PIPING SYSTEM).
 - D. MAXIMUM 2" (63 MM OD) NOMINAL DIAMETER AQUATECHNIK NA FUSION-TECH POLYPROPYLENE (PP-RCT) PLASTIC PIPE (SDR 7.4) (CLOSED OR VENTED PIPING SYSTEM).
3. MINIMUM 3/4" DEPTH HILTI FS-ONE MAX INTUMESCENT FIRESTOP SEALANT.
4. MINIMUM 1/2" DEPTH HILTI FS-ONE MAX INTUMESCENT FIRESTOP SEALANT.
5. MINIMUM 1/4" BEAD HILTI FS-ONE MAX INTUMESCENT FIRESTOP SEALANT APPLIED AT POINT OF CONTACT.

NOTES : 1. MAXIMUM DIAMETER OF OPENING = 3-1/2".
 2. ANNULAR SPACE = MINIMUM 0", MAXIMUM 1".
 3. FOR PENETRANT TYPE 2C, T-RATING = 1/4-HR.
 FOR PENETRANT TYPE 2A, T-RATING = 3/4-HR.
 FOR PENETRANT TYPES 2B AND 2D, T-RATING = 1-HR.



HILTI, Inc.
 Plano, Texas USA (800) 879-8000

Sheet	1 of 1
Scale	3/16" = 1"
Date	Aug. 27, 2021

Drawing No.
cUL
FC2517b