

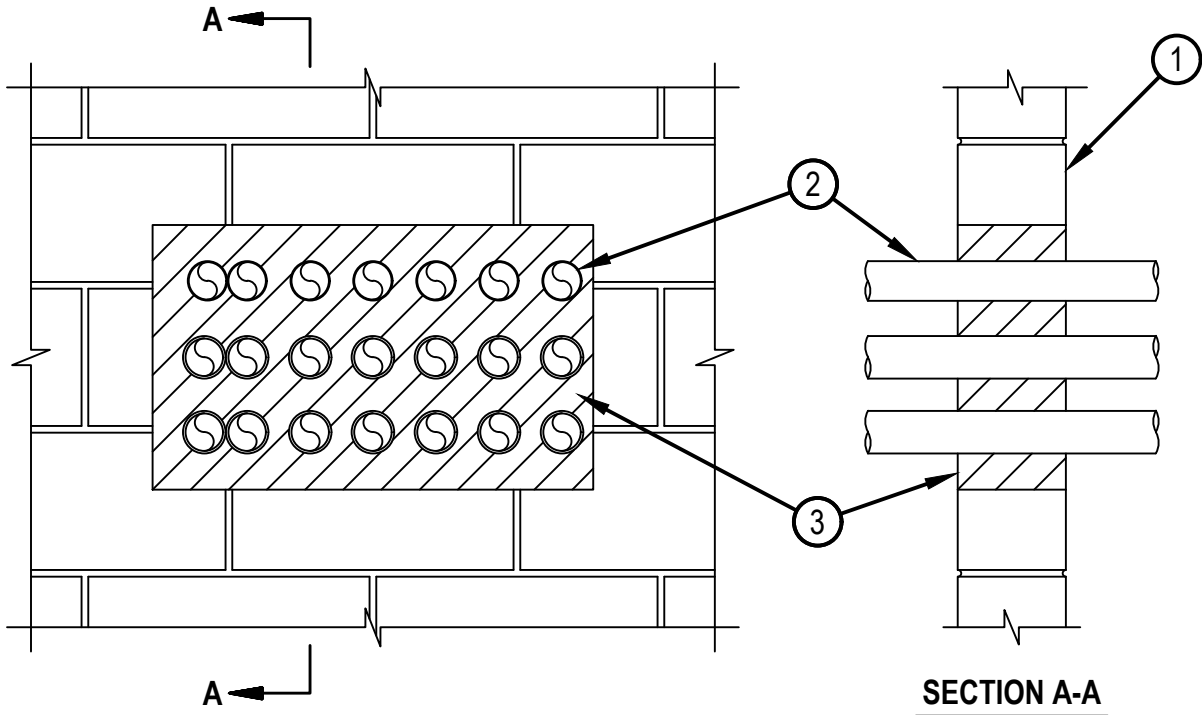


Classified by  
Underwriters Laboratories, Inc.  
to UL 1479 and CAN/ULC-S115

## System No. W-J-1327

WJ 1327

ANSI/UL1479 (ASTM E814)	CAN/ULC S115
F Rating — 2 Hr	F Rating — 2 Hr
T Rating — 1/2 Hr	FT Rating — 1/2 Hr
	FH Rating — 2 Hr
	FTH Rating — 1/2 Hr



1. Wall Assembly —Min 6 in. (152 mm) thick reinforced lightweight or normal weight (100-150 pcf or 1600 - 2400 kg/m<sup>3</sup>) concrete wall. Wall may also be constructed of any UL Classified Concrete Blocks\*. Max area of opening is 360 in<sup>2</sup> (2323 cm<sup>2</sup>) with max dimension of 24-1/2 in. (622 mm).

See Concrete Blocks (CAZT) category in the Fire Resistance Directory for names of manufacturers.

2. Through Penetrants —One or more nom 2 in. (51 mm) diam (or smaller) rigid steel conduit or electrical metallic tubing (EMT) to be installed within the opening. The annular space between conduits or tubing shall be min 0 in. (point contact) to max 2 in. (51 mm). The annular space between conduits or tubing and periphery of opening shall be min 1/2 in. (13 mm) to max 2 in. (51 mm). Conduit or tubing to be rigidly supported on both sides of wall assembly.

3. Fill, Void or Cavity Material\* — Foam —Fill material applied to completely fill annulus, flush with both surfaces of the wall. Min fill material thickness is 6 in. (152 mm).

HILTI CONSTRUCTION CHEMICALS, DIV OF HILTI INC — CP 660 Firestop Foam

\* Indicates such products shall bear the UL or cUL Certification Mark for jurisdictions employing the UL or cUL Certification (such as Canada), respectively.



**Hilti Firestop Systems**

Reproduced by HILTI, Inc. Courtesy of  
Underwriters Laboratories, Inc.  
September 15, 2021