

cUL SYSTEM NO. HW-D-0955



TOP OF WALL JOINT : GYPSUM SHAFT WALL ASSEMBLY

F-RATING = 2-HR.

FT-RATING = 1-1/4-HR.

FH AND FTH-RATINGS = 0-HR.

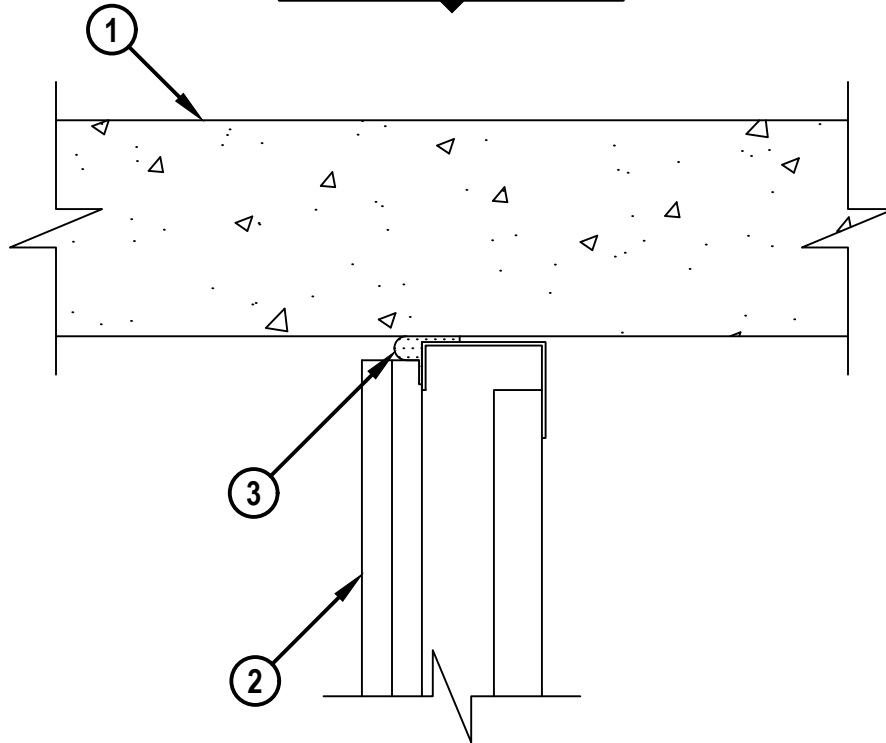
CLASS II MOVEMENT CAPABILITIES - 50% COMPRESSION OR EXTENSION OR
66% COMPRESSION ONLY (SEE NOTE BELOW)

L-RATING AT AMBIENT = 1.65 CFM / LIN FT OR LESS

L-RATING AT 400°F = 1.33 CFM / LIN FT OR LESS

cUL HWD0955a.110321

CROSS-SECTIONAL VIEW



HILTI, Inc.
Plano, Texas USA (800) 879-8000

Sheet	1 of 2
Scale	1/4" = 1"
Date	Nov. 03, 2021

Drawing No.
cUL
HWD0955a

Saving Lives through Innovation and Education

TOP OF WALL JOINT : GYPSUM SHAFT WALL ASSEMBLY

F-RATING = 2-HR.

FT-RATING = 1-1/4-HR.

FH AND FTH-RATINGS = 0-HR.

CLASS II MOVEMENT CAPABILITIES - 50% COMPRESSION OR EXTENSION OR
66% COMPRESSION ONLY (SEE NOTE BELOW)

L-RATING AT AMBIENT = 1.65 CFM / LIN FT OR LESS

L-RATING AT 400°F = 1.33 CFM / LIN FT OR LESS

cUL HWD0955a.110321

1. CONCRETE FLOOR ASSEMBLY :

A. LIGHTWEIGHT OR NORMAL WEIGHT CONCRETE FLOOR (MINIMUM 4-1/2" THICK).

B. ANY UL/cUL CLASSIFIED PRECAST (HOLLOW-CORE) CONCRETE FLOOR (MINIMUM 6" THICK).

2. GYPSUM SHAFT WALL ASSEMBLY (UL/cUL CLASSIFIED U400, V400, OR W400 SERIES) (2-HR. FIRE-RATING) TO INCLUDE THE FOLLOWING CONSTRUCTION FEATURES :

A. "J" SHAPED CEILING RUNNER SIZED TO ACCOMMODATE STEEL STUDS WITH UNEQUAL LEGS OF 1" AND 2", FORMED OF MIN. 20 GA. STEEL. RUNNER SECURED TO CONCRETE FLOOR WITH STEEL FASTENERS OR WELDS SPACED MAXIMUM 24" O/C.

B. "C-H" SHAPED STUDS (MINIMUM 2-1/2" WIDE, MINIMUM 25 GA.) CUT 3/8" LESS IN LENGTH THAN ASSEMBLY HEIGHT, NESTING IN CEILING RUNNER WITHOUT ATTACHMENT. STUDS SECURED TO FLANGE OF CEILING RUNNER ON FINISHED SIDE OF WALL ONLY WITH NO. 8 x 1/2" LONG SELF-DRILLING SELF-TAPPING STEEL SCREWS AT SLOT MID-HEIGHT.

C. NOMINAL 1" THICK GYPSUM LINER PANEL CUT MAX 3/4" LESS IN LENGTH THAN ASSEMBLY HEIGHT. TYPE AND SHEET ORIENTATION AS SPECIFIED IN THE INDIVIDUAL UL DESIGN.

D. NOMINAL 5/8" THICK TYPE C GYPSUM WALLBOARD CUT MAX 3/4" LESS IN LENGTH THAN ASSEMBLY HEIGHT WITH SCREW ATTACHMENT 1" BELOW THE BOTTOM OF THE CEILING RUNNER OR SLOTTED CEILING TRACK. NO GYPSUM BOARD ATTACHMENT SCREWS ARE TO PENETRATE THE CEILING TRACK. TYPE, NUMBER OF LAYERS, AND SHEET ORIENTATION AS SPECIFIED IN THE INDIVIDUAL UL DESIGN.

3. HILTI CFS-TTS 212, CFS-TTS 358, CFS-TTS 600, CFS-TTS R, OR CFS-TTS OS TOP TRACK SEAL INSTALLED OVER CEILING RUNNER ON FINISHED SIDE OF WALL PRIOR TO ATTACHMENT TO UNDERSIDE OF CONCRETE FLOOR IN ACCORDANCE WITH THE ACCOMPANYING INSTALLATION INSTRUCTIONS. BUTT JOINTS IN CTS-TTS SHALL BE COMPRESSED MIN 1/4".

NOTE : ALLOWABLE JOINT WIDTHS TO BE DETERMINED AS FOLLOWS :

A. TO ACCOMMODATE MAX 50% COMPRESSION OR EXTENSION, MAX WIDTH OF JOINT = 1/2".

B. TO ACCOMMODATE MAX 66% COMPRESSION ONLY, MAX WIDTH OF JOINT = 3/4".



Hilti Firestop Systems

HILTI, Inc.
Plano, Texas USA (800) 879-8000

Sheet	2 of 2
Scale	-
Date	Nov. 03, 2021

Drawing No.

cUL
HWD0955a