

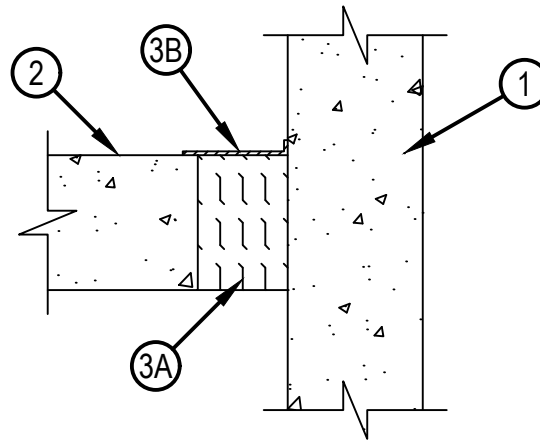


Classified by
Underwriters Laboratories, Inc.
to UL 2079 and CAN/ULC-S115

System No. FW-D-1141

FWD 1141

ANSI/UL 2079	CAN/ULC S115
Assembly Rating - 3 Hr	F Rating — 3 Hr
Nominal Joint Width – 3 In.	FT Rating — 3 Hr
Class II Movement Capabilities - 12.5% Compression and 4% Extension	FH Rating — 0 Hr
L Rating At Ambient — Less Than 1 CFM/Lin Ft	FTH Rating — 0 Hr
L Rating At 400°F — Less Than 1 CFM/Lin Ft	Nominal Joint Width – 76 mm
	Class II Movement Capabilities - 12.5% Compression and 4% Extension
	L Rating at Ambient — Less than 1.55 L/s/m
	L Rating at 204°C — Less than 1.55 L/s/m



1. Wall Assembly — Min 4-1/2 in. (114 mm) thick reinforced lightweight or normal weight (100-150 pcf or 1600-2400 kg/m³) structural concrete. Wall may also be constructed of any UL Classified Concrete Blocks*.

See Concrete Blocks (CATZ) category in the Fire Resistance Directory for names of manufacturers.

2. Floor Assembly — Min 4-1/2 in. (114 mm) thick reinforced lightweight or normal weight (100-150 pcf or 1600-2400 kg/m³) structural concrete.

3. Joint System — Max width of joint (at time of installation of joint system) is 3 in. (76 mm). The joint system is designed to accommodate a max 12.5 percent compression or max 4 percent extension from its installed width. The joint system shall consist of the following:

A. Forming Material* — Min 4 pcf mineral wool batt insulation installed in joint opening as a permanent form. Pieces of batt cut to min width of 4-1/2 in. (114 mm) and installed edge-first into joint opening, parallel with joint direction, such that batt sections are compressed min 50 percent in thickness and that the compressed batt sections are installed flush with top surface of the floor as required to accommodate the required thickness of fill material. Adjoining lengths of batt to be tightly-butted with butted seams spaced min 40 in. (1016 mm) apart along the length of joint.

INDUSTRIAL INSULATION GROUP L L C — MinWool-1200 Safing

ROCKWOOL — SAFE Mineral Wool

THERMAFIBER INC — Type SAF

B. Fill, Void or Cavity Material* — Sealant — Min 1/8 in. (wet) thickness of fill material spray or brush applied over the joint, lapping min 3/4 in. (19 mm) onto top surface of floor at both sides of joint.

HILTI CONSTRUCTION CHEMICALS, DIV OF HILTI INC — CFS-SP SIL Firestop Silicone Joint Spray

* Indicates such products shall bear the UL or cUL Certification Mark for jurisdictions employing the UL or cUL Certification (such as Canada), respectively.



Hilti Firestop Systems

Reproduced by HILTI, Inc. Courtesy of
Underwriters Laboratories, Inc.
December 6, 2021