

# PLASTIC PIPE THROUGH GYPSUM WALL ASSEMBLY

F-RATING = 1-HR.

FT-RATING = 1/2-HR.

FH AND FTH-RATINGS = 0-HR.

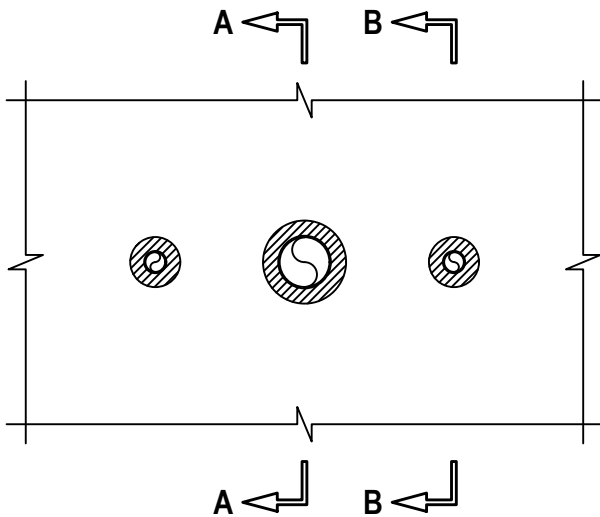
NOTE : TESTED WITH A 50 Pa PRESSURE DIFFERENTIAL

L-RATING AT AMBIENT = LESS THAN 5.1 / L / S / M<sup>2</sup>

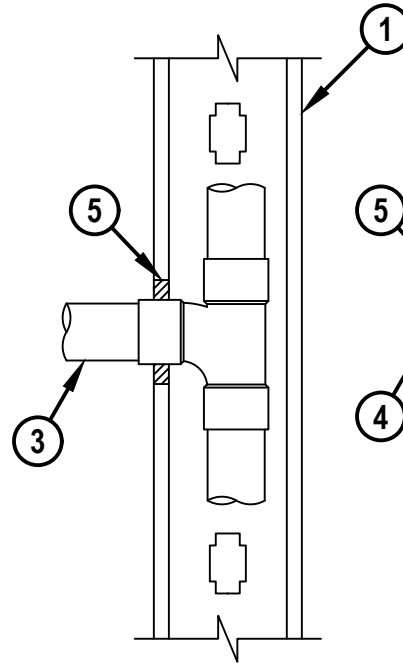
L-RATING AT 400°F = LESS THAN 5.1 / L / S / M<sup>2</sup>

cUL WL2770b.111820

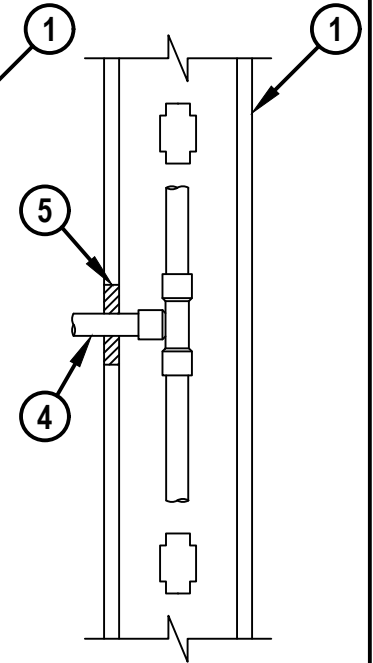
**FRONT VIEW**



**SECTION A-A**



**SECTION B-B**



1. GYPSUM WALL ASSEMBLY (UL/cUL CLASSIFIED U300, U400, V400, OR W400 SERIES) (1-HR. FIRE-RATING).
2. [NOT SHOWN] WOOD STUDS TO CONSIST OF NOMINAL 2 x 4 LUMBER. STEEL STUDS TO BE MINIMUM 3-5/8" WIDE.
3. PENETRATING ITEM MAY CONSIST OF ONE OF THE FOLLOWING :
  - A. MAXIMUM 2" NOMINAL DIAMETER XFR-PVC PLASTIC PIPE (SCH 40) (CLOSED OR VENTED PIPING SYSTEM) WITH XFR-PVC TEE FITTING INSTALLED PARTIALLY OR ENTIRELY WITHIN OPENING.
  - B. MAXIMUM 2" NOMINAL DIAMETER PVC PLASTIC PIPE (SCH 40, SOLID CORE) (CLOSED OR VENTED PIPING SYSTEM) WITH PVC TEE FITTING INSTALLED PARTIALLY OR ENTIRELY WITHIN OPENING.
4. MAXIMUM 3/4" NOMINAL DIAMETER CROSS-LINKED POLYETHYLENE (PEX) TUBING (SDR 9) (CLOSED OR VENTED PIPING SYSTEM) WITH BRASS OR COPPER TEES LOCATED WITHIN STUD CAVITY ONLY.
5. MINIMUM 5/8" DEPTH HILTI FS-ONE MAX INTUMESCENT FIRESTOP SEALANT.

NOTES : 1. MAXIMUM DIAMETER OF OPENING = 3-1/2", EXCEPT FOR 3/4" (AND SMALLER) PENETRATING ITEMS THE MAXIMUM DIAMETER OF OPENING = 1-1/2".  
 2. ANNULAR SPACE = MINIMUM 1/4", MAXIMUM 7/8".



HILTI, Inc.  
 Plano, Texas USA (800) 879-8000

Sheet	1 of 1
Scale	1/8" = 1"
Date	Nov. 18, 2020

Drawing No.  
**cUL**  
**WL2770b**