

**PLASTIC PIPE THROUGH CONCRETE WALL OR CONCRETE BLOCK WALL ASSEMBLY**

F-RATING = 2-HR.

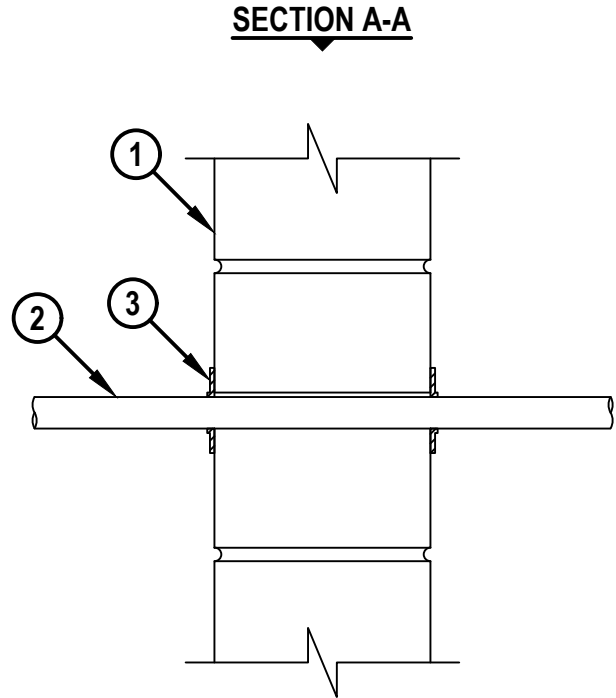
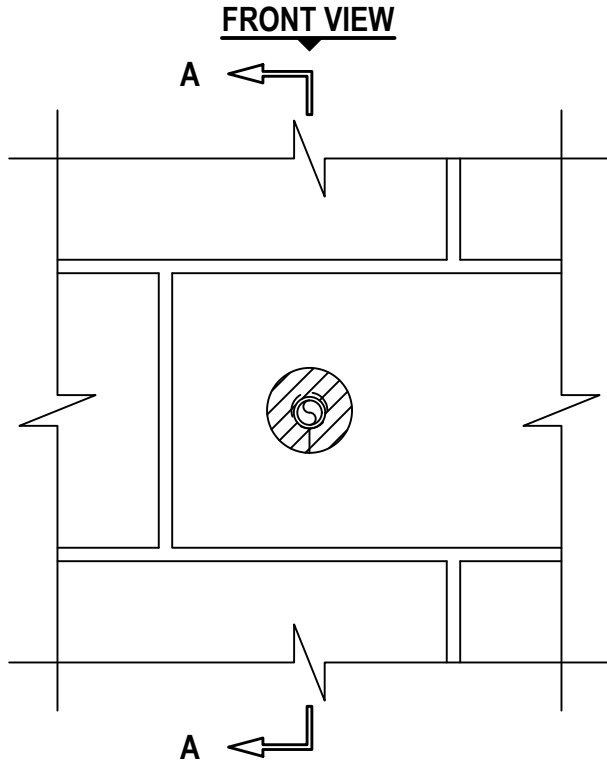
FT, FH, AND FTH-RATINGS = 0-HR.

L-RATING AT AMBIENT = LESS THAN 0.47 L/S (1 CF)/OPENING

L-RATING AT 400°F = LESS THAN 0.47 L/S (1 CF)/OPENING

NOTE : TESTED WITH A 50 Pa PRESSURE DIFFERENTIAL

cUL WJ2395a.081022



1. CONCRETE WALL ASSEMBLY (2-HR. FIRE-RATING) :
  - A. LIGHTWEIGHT OR NORMAL WEIGHT CONCRETE WALL (MINIMUM 6" THICK).
  - B. ANY UL/cUL CLASSIFIED CONCRETE BLOCK WALL (MINIMUM 6" THICK).
2. PENETRATING ITEM TO BE ONE OF THE FOLLOWING :
  - A. MAXIMUM 3/4" NOMINAL DIAMETER PEX TUBING (SDR 9) (CLOSED OR VENTED PIPING SYSTEM).
3. HILTI CFS-D 1" FIRESTOP PUTTY DISC PRESSED FIRMLY AROUND THE PIPE LAPPING NOMINAL 5mm ONTO PENETRANT COMPLETELY COVERING OPENING AND FIRMLY PRESSED TO LAP ONTO THE WALL. DISC SEAM TO BE FIRMLY PRESSED AND SEALED TIGHT.

NOTES : 1. OPENING MAY BE ROUND WITH A MAXIMUM DIAMETER OF DIMENSION OF 1".  
 2. ANNULAR SPACE BETWEEN PENETRANT AND PERIPHERY OF OPENING = MINIMUM 0", MAXIMUM 1/8".



HILTI, Inc.  
 Plano, Texas USA (800) 879-8000

Sheet	1 of 1
Scale	3/16" = 1"
Date	Aug. 10, 2022

Drawing No.  
**cUL**  
**WJ2395a**