

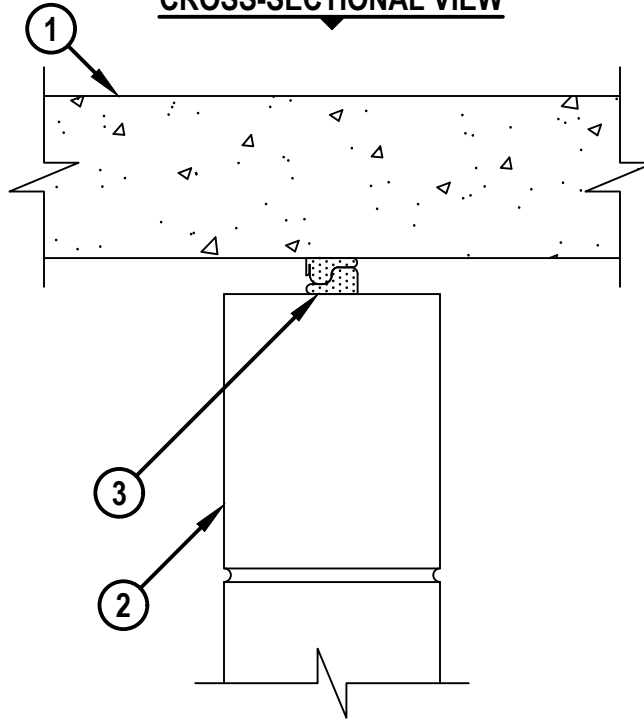
TOP OF WALL JOINT : CONCRETE WALL ASSEMBLY

ASSEMBLY RATING = 2-HR.

CLASS II MOVEMENT CAPABILITIES - SEE NOTE NO. 2 BELOW

HWD0965a.011323

CROSS-SECTIONAL VIEW



1. LIGHTWEIGHT OR NORMAL WEIGHT CONCRETE FLOOR ASSEMBLY (MINIMUM 4-1/2" THICK).
2. CONCRETE WALL ASSEMBLY :
 - A. LIGHTWEIGHT OR NORMAL WEIGHT CONCRETE WALL (MINIMUM 4-1/2" THICK).
 - B. ANY UL/cUL CLASSIFIED CONCRETE BLOCK WALL.
3. HILTI CFS-TTS MD OS OR HILTI CFS-TTS MD 600. BOTH SIDES OF HILTI CFS-TTS MD ARE INSERTED INTO THE JOINT BY ROLLING THE PRODUCT ONTO ITSELF WITH THE OPPOSING CONTOUR ENDS NESTING TOGETHER. THE PRODUCT TO BE INSTALLED FROM EITHER SIDE OF THE WALL CENTERED WITHIN THE WALL. FOR WALLS THICKER THAN 4-1/2", THE PRODUCT MAY BE INSTALLED OFFSET FROM CENTER TO HAVE A MIN 1-1/4" RECESS FROM BOTH SIDES OF THE WALL.

NOTES : 1. WIDTH OF JOINT = MINIMUM 1/2", MAXIMUM 1-1/8".
 2. MOVEMENT RANGES TO BE DETERMINED AS FOLLOWS :
 A. FOR MAXIMUM 50% COMPRESSION OR MAXIMUM 12.5% EXTENSION, THE NOMINAL JOINT WIDTH SHALL BE 1".
 B. FOR MAXIMUM 44% COMPRESSION ONLY, THE NOMINAL JOINT WIDTH SHALL BE 1-1/8".



HILTI, Inc.
 Plano, Texas USA (800) 879-8000

Sheet	1 of 1
Scale	3/16" = 1"
Date	Jan. 13, 2023

Drawing No.
**HWD
 0965a**