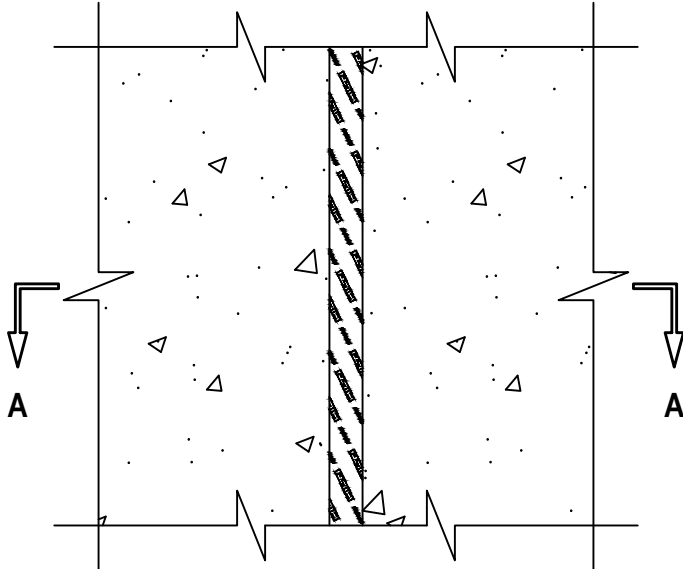


**FIRE-RATED JOINT THROUGH CONCRETE WALL ASSEMBLY**

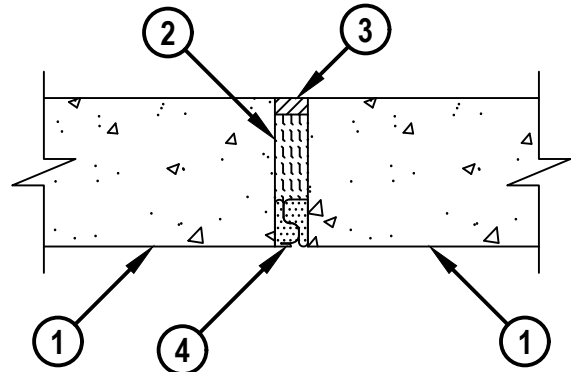
ASSEMBLY RATING = 2-HR.

WWS0097a.032823

**FRONT VIEW**



**SECTION A-A**



**1. CONCRETE WALL ASSEMBLY :**

- A. LIGHTWEIGHT OR NORMAL WEIGHT CONCRETE WALL (MINIMUM 4-1/2" THICK).
- B. ANY UL/cUL CLASSIFIED CONCRETE BLOCK WALL.

**2. MINIMUM 3" THICKNESS MINERAL WOOL SAFING (MIN. 4 PCF DENSITY) TIGHTLY PACKED.**

**3. MINIMUM 1/2" DEPTH OF ANY OF THE FOLLOWING FIRESTOP SEALANTS APPLIED TO EXTERIOR OF WALL :**

- A. 790 OR 795 SEALANT MANUFACTURED BY DOW SILICONES CORP.
- B. PENSIL 300 SEALANT MANUFACTURED BY GENERAL ELECTRIC SILICONE PRODUCTS DIVISION.
- C. DYNATROL II CAULK, OR 864 SILICONE CAULK MANUFACTURED BY PECORA CORP.

**4. HILTI CFS-TTS MD OS OR HILTI CFS-TTS MD 600. BOTH SIDES OF HILTI CFS-TTS MD ARE INSERTED INTO THE JOINT BY ROLLING THE PRODUCT ONTO ITSELF WITH THE OPPOSING CONTOUR ENDS NESTING TOGETHER. THE OUTER SURFACE OF THE PRODUCT SHALL BE FLUSH WITH INTERIOR SURFACE OF THE WALL. FOR WALLS THICKER THAN 4-1/2" , THE PRODUCT MAY BE INSTALLED RECESSED FROM SURFACE OF INTERIOR WALL AS REQUIRED TO ACCOMMODATE THE REQUIRED THICKNESS OF PACKING MATERIAL (ITEM 2).**

**NOTE : WIDTH OF JOINT = MINIMUM 1/2", MAXIMUM 1".**



HILTI, Inc.  
Plano, Texas USA (800) 879-8000

Sheet	1 of 1
Scale	11/64" = 1"
Date	Mar. 28, 2023

Drawing No.  
**WWS  
0097a**