

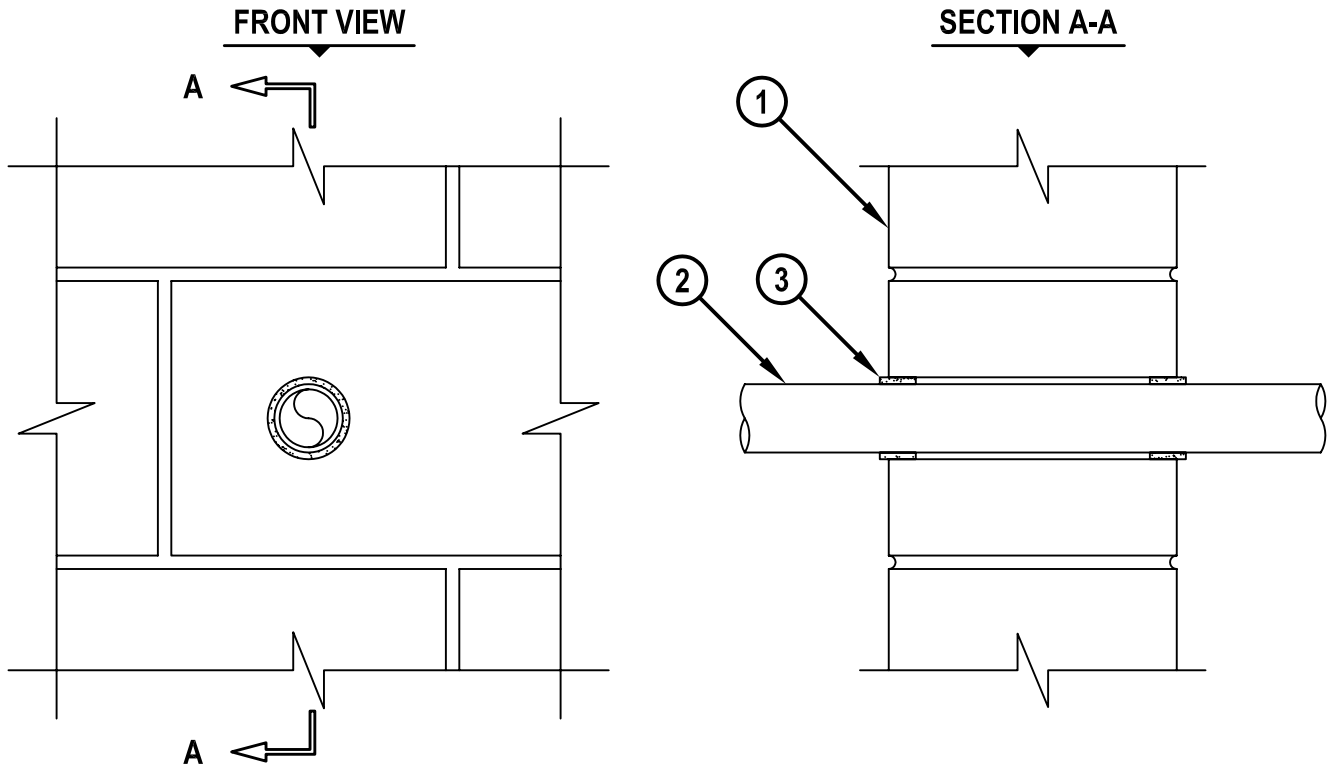
PLASTIC PIPE THROUGH CONCRETE OR BLOCK WALL ASSEMBLY

F AND FH-RATING = 1-HR.

FT AND FTH-RATING = 3/4 AND 1-HR.

NOTE : TESTED WITH A 50 Pa PRESSURE DIFFERENTIAL

cULWJ2011b.051905



1. CONCRETE WALL ASSEMBLY (1-HR. FIRE-RATING) :
 - A. LIGHTWEIGHT OR NORMAL WEIGHT CONCRETE WALL (MINIMUM 4-1/2" THICK).
 - B. ANY UL/cUL CLASSIFIED CONCRETE BLOCK WALL.
2. PENETRATING ITEM TO BE ONE OF THE FOLLOWING (ALSO SEE NOTE NO. 3 BELOW) :
 - A. MAXIMUM 1-1/2" NOMINAL DIAMETER PVC PLASTIC PIPE (CELLULAR OR SOLID CORE).
 - B. MAXIMUM 1" NOMINAL DIAMETER PEX TUBING.
3. HILTI CP 648E WRAP STRIP (NOMINAL 3/16" THICK x 1" WIDE) CONTINUOUSLY WRAPPED AROUND THE OUTER CIRCUMFERENCE OF THE PIPE, COVERING ONE TIME, WITH ENDS BUTTED AND HELD IN PLACE WITH TAPE. WRAP STRIP TO BE SLID INTO ANNULAR SPACE, SUCH THAT 1/4" OF THE WRAP STRIP PROTRUDES FROM THE WALL SURFACE. WRAP STRIPS REQUIRED ON BOTH SIDES OF THE WALL.

NOTES : 1. MAXIMUM DIAMETER OF OPENING = 2-1/4".
 2. ANNULAR SPACE = MINIMUM 3/16", MAXIMUM 5/16".
 3. CLOSED OR VENTED PIPING SYSTEM (PVC = SCHEDULE 40; PEX = SDR 9).
 4. WHEN PVC PLASTIC PIPE IS USED, FT AND FTH-RATINGS = 3/4-HR. WHEN PEX TUBING IS USED, FT AND FTH-RATINGS = 1-HR.



HILTI, Inc.
 Tulsa, Oklahoma USA (918) 252-6000

Sheet	1 of 1
Scale	3/16" = 1"
Date	MAY 19, 2005

Drawing No.
cUL
WJ2011b