

# PLASTIC PIPE THROUGH CONCRETE FLOOR/WALL OR BLOCK WALL ASSEMBLY

F-RATING = 2-HR.

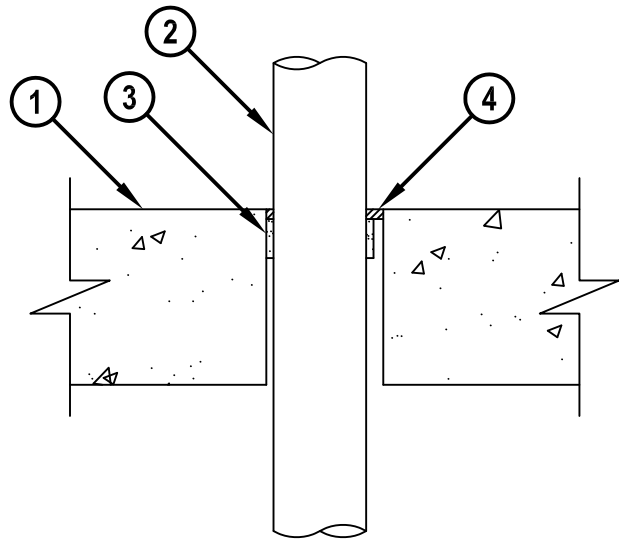
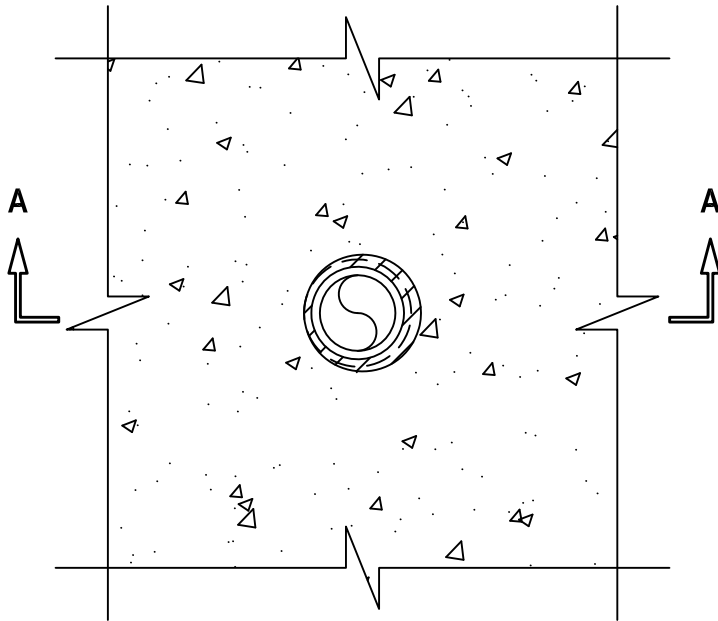
FT-RATING = 1/4-HR.

FH AND FTH-RATINGS = 0-HR.

NOTE : TESTED WITH A 50 Pa PRESSURE DIFFERENTIAL

TOP VIEW

SECTION A-A



cUL CAJ2056b.011715

1. CONCRETE FLOOR OR WALL ASSEMBLY (2-HR. FIRE-RATING) :
  - A. LIGHTWEIGHT OR NORMAL WEIGHT CONCRETE FLOOR OR WALL (MINIMUM 4-1/2" THICK).
  - B. ANY UL/cUL CLASSIFIED CONCRETE BLOCK WALL.
2. MAXIMUM 2" NOMINAL DIAMETER POLYPROPYLENE (PP) PLASTIC PIPE (SCHEDULE 80) (CLOSED OR VENTED PIPING SYSTEM).
3. HILTI CP 648S WRAP STRIP WRAPPED CONTINUOUSLY AROUND CIRCUMFERENCE OF PIPE, AND HELD IN PLACE WITH INTEGRATED TAPE. BOTTOM EDGE OF WRAP STRIP TO BE RECESSED 3-1/4" FROM BOTTOM SURFACE OF CONCRETE OR 1/4" FROM EACH SIDE OF WALL (SEE TABLE BELOW).
4. MINIMUM 1/4" DEPTH HILTI FS-ONE MAX OR FS-ONE INTUMESCENT FIRESTOP SEALANT.

NOMINAL PIPE DIAMETER	PRODUCT DESCRIPTION	MAXIMUM DIAMETER OF OPENING	ANNULAR SPACE	
			MINIMUM	MAXIMUM
1-1/2"	CP 648S - 1.5" US	2-1/2"	3/16"	7/16"
2"	CP 648S - 2" US	3"	3/16"	7/16"

NOTE : HILTI CP 648S FIRESTOP WRAP STRIPS AND HILTI FS-ONE MAX OR FS-ONE INTUMESCENT FIRESTOP SEALANT ARE REQUIRED ON BOTH SIDES OF A WALL.



HILTI, Inc.  
Tulsa, Oklahoma USA (800) 879-8000

Sheet	1 of 1
Scale	13/64" = 1"
Date	Jan. 17, 2015

Drawing No.  
**cUL**  
**CAJ2056b**