

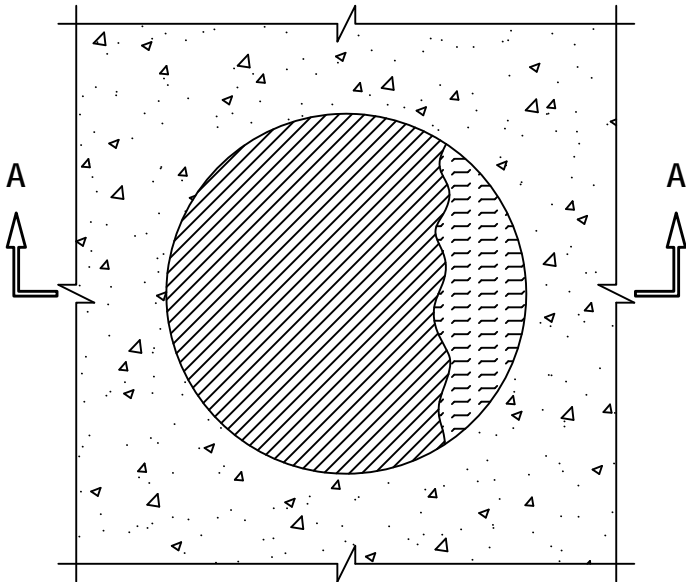
BLANK OPENING THROUGH CONCRETE FLOOR ASSEMBLY

F-RATING = 2-HR.

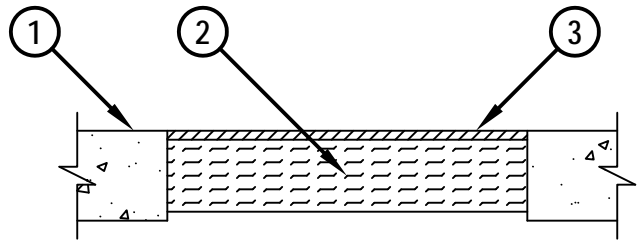
FT-RATING = 1-HR.

FH AND FTH-RATING = 0-HR.

TOP VIEW



SECTION A-A



cUL FA0001b.122313

1. LIGHTWEIGHT OR NORMAL WEIGHT CONCRETE FLOOR ASSEMBLY (MINIMUM 2-1/2" THICK) (2-HR. FIRE-RATING).
2. MINIMUM 2" THICKNESS MINERAL WOOL (MIN. 4 PCF DENSITY) TIGHTLY PACKED AND RECESSED TO ACCOMMODATE FIRESTOP SEALANT.
3. MINIMUM 1/4" DEPTH HILTI CP 604 SELF-LEVELING FIRESTOP SEALANT, HILTI CFS-S SIL GG FIRESTOP SILICONE SEALANT, OR HILTI CFS-S SIL SL FIRESTOP SILICONE SEALANT FLUSH WITH TOP SURFACE OF CONCRETE FLOOR ASSEMBLY.

NOTE : MAXIMUM DIAMETER OF OPENING = 10".



HILTI, Inc.
Tulsa, Oklahoma USA (800) 879-8000

Sheet	1 of 1
Scale	3/16" = 1"
Date	Dec. 23, 2013

Drawing No.

**cUL
FA0001b**