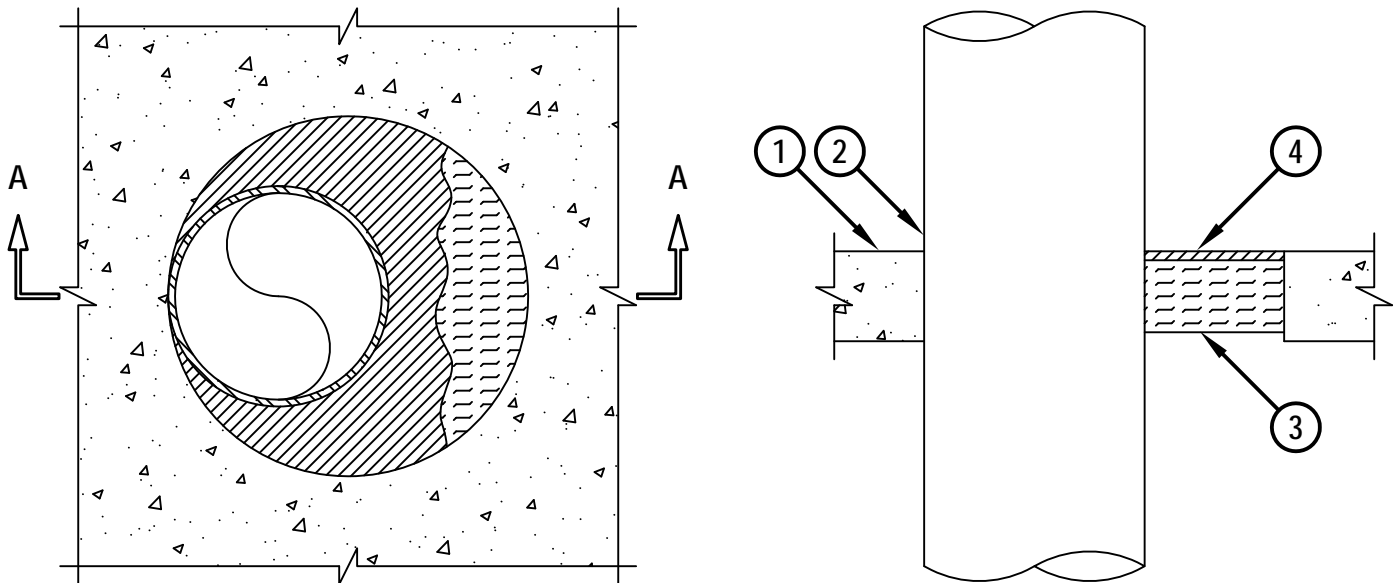


# METAL PIPE THROUGH CONCRETE FLOOR ASSEMBLY

F-RATING = 2-HR.  
 FT, FH, AND FTH-RATING = 0-HR.

**TOP VIEW**

**SECTION A-A**



cUL FA1004b.010714

1. LIGHTWEIGHT OR NORMAL WEIGHT CONCRETE FLOOR ASSEMBLY (MINIMUM 2-1/2" THICK) (2-HR. FIRE-RATING).
2. PENETRATING ITEM TO BE ONE OF THE FOLLOWING :
  - A. MAXIMUM 6" NOMINAL DIAMETER STEEL PIPE (SCHEDULE 10 OR HEAVIER).
  - B. MAXIMUM 6" NOMINAL DIAMETER CAST IRON OR DUCTILE IRON PIPE.
  - C. MAXIMUM 6" NOMINAL DIAMETER COPPER PIPE OR TUBING.
  - D. MAXIMUM 6" NOMINAL DIAMETER STEEL CONDUIT.
  - E. MAXIMUM 4" NOMINAL DIAMETER EMT.
3. MINIMUM 2" THICKNESS MINERAL WOOL (MIN. 4 PCF DENSITY) TIGHTLY PACKED AND RECESSED TO ACCOMMODATE FIRESTOP SEALANT.
4. MINIMUM 1/4" DEPTH HILTI CP 604 SELF-LEVELING FIRESTOP SEALANT, HILTI CFS-S SIL GG FIRESTOP SILICONE SEALANT, OR HILTI CFS-S SIL SL FIRESTOP SILICONE SEALANT FLUSH WITH TOP SURFACE OF CONCRETE FLOOR ASSEMBLY.

NOTES : 1. MAXIMUM DIAMETER OF OPENING = 28".  
 2. ANNULAR SPACE = MINIMUM 0", MAXIMUM 9-3/8".



HILTI, Inc.  
 Tulsa, Oklahoma USA (800) 879-8000

Sheet	1 of 1
Scale	3/16" = 1"
Date	Jan. 07, 2014

Drawing No.

**cUL  
 FA1004b**