

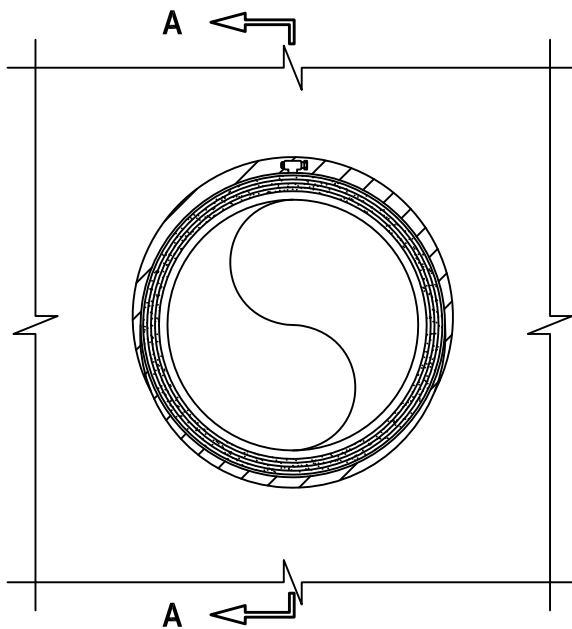
# PLASTIC PIPE THROUGH 1-HR. OR 2-HR. GYPSUM WALL ASSEMBLY

F AND T-RATING = 1-HR. OR 2-HR.

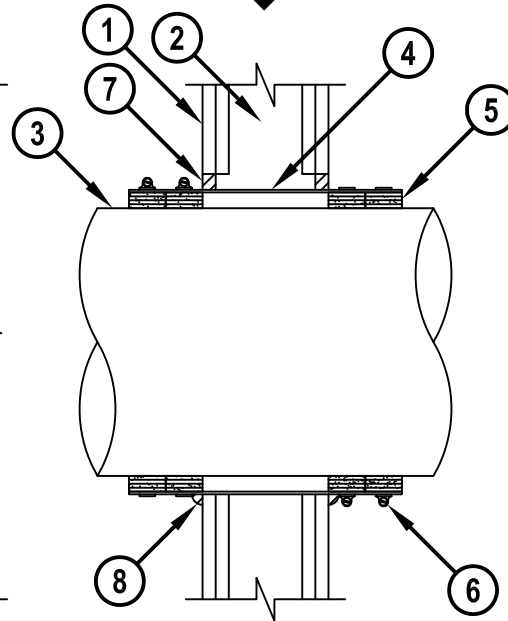
FH AND FTH-RATING = 0-HR.

NOTE : TESTED WITH A 50 Pa PRESSURE DIFFERENTIAL

**FRONT VIEW**



**SECTION A-A**



cULWL2027c.011715

1. GYPSUM WALL ASSEMBLY (UL/cUL CLASSIFIED U400 SERIES WALL) (1-HR. OR 2-HR. FIRE-RATING) (2-HR. SHOWN).
2. [NOT SHOWN] STEEL STUDS TO BE MINIMUM 3-1/2" WIDE.
3. PENETRATING ITEM TO BE ONE OF THE FOLLOWING:
  - A. MAXIMUM 12" NOMINAL DIAMETER PVC PLASTIC PIPE (CELLULAR OR SOLID CORE).
  - B. MAXIMUM 12" NOMINAL DIAMETER CPVC PLASTIC PIPE (CLOSED PIPING SYSTEM ONLY).
4. MAXIMUM 14-1/2" DIAMETER SHEET METAL SLEEVE (MIN. 28 GA.) HAVING A MINIMUM 2" LAP ALONG LONGITUDINAL SEAM. LENGTH OF SLEEVE TO EXTEND 3-1/2" BEYOND EACH SURFACE OF WALL.
5. HILTI CP 648E WRAP STRIP (NOMINAL 3/16" THICK x 1-3/4" WIDE) CONTINUOUSLY WRAPPED AROUND THE OUTER CIRCUMFERENCE OF THE PIPE, COVERING FOUR TIMES, WITH ENDS BUTTED AND HELD IN PLACE WITH TAPE. BUTTED ENDS IN SUCCESSIVE LAYER SHALL BE OFFSET. TWO SETS OF WRAP STRIP INSTALLED WITHIN THE SHEET METAL SLEEVE ON EACH SIDE OF THE WALL.
6. HILTI COLLAR CLAMP(S) (1/2" WIDE) FASTENED AROUND SHEET METAL SLEEVE AT THE CENTER OF EACH WRAP STRIP.
7. MINIMUM 5/8" DEPTH HILTI FS-ONE MAX OR FS-ONE INTUMESCENT FIRESTOP SEALANT.
8. MINIMUM 1/2" BEAD HILTI FS-ONE MAX OR FS-ONE INTUMESCENT FIRESTOP SEALANT APPLIED AT POINT OF CONTACT.

**NOTES :** 1. MAXIMUM DIAMETER OF OPENING = 15".  
 2. ANNULAR SPACE = MINIMUM 0", MAXIMUM 3/4".  
 3. CLOSED OR VENTED PIPING SYSTEM (PVC = SCHEDULE 40; CPVC = SDR 13.5).



HILTI, Inc.  
 Tulsa, Oklahoma USA (800) 879-8000

Sheet	1 of 1
Scale	7/64" = 1"
Date	Jan. 17, 2015

Drawing No.  
**cUL**  
**WL2027c**