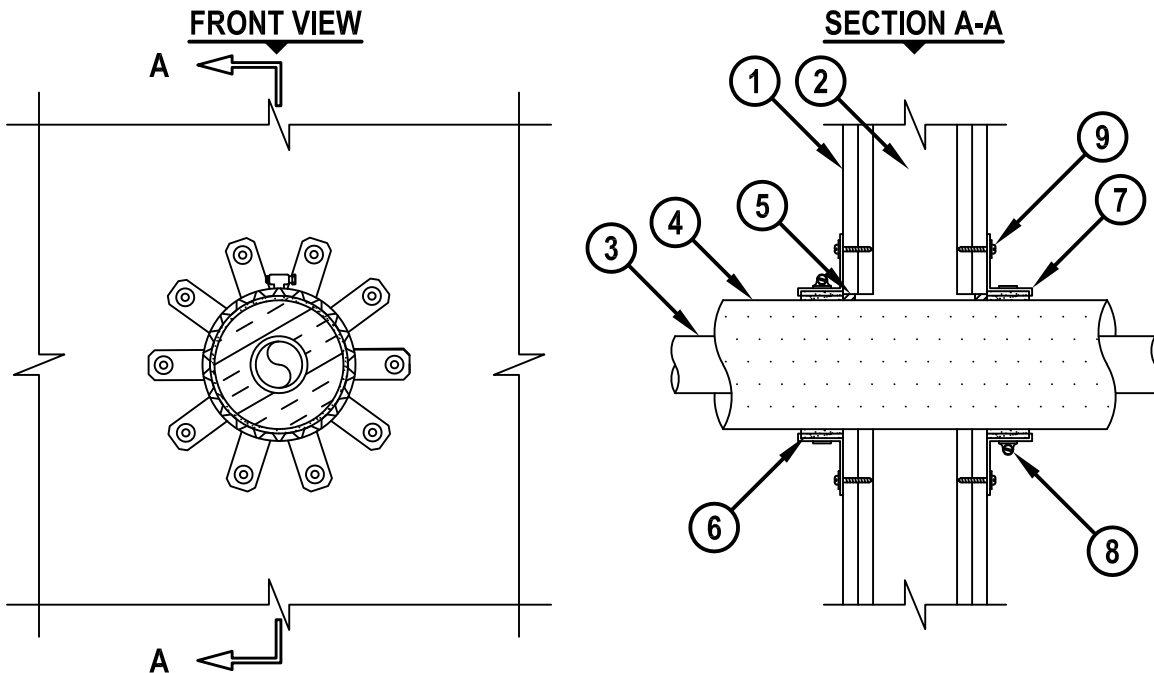


INSULATED PLASTIC PIPE THROUGH GYPSUM WALL ASSEMBLY

F, FT, FH AND FTH-RATINGS = 1-HR. OR 2-HR.

NOTE : TESTED WITH A 50 Pa PRESSURE DIFFERENTIAL



cUL WL2043c.012319

1. GYPSUM WALL ASSEMBLY (UL/cUL CLASSIFIED U300, U400, OR V400 SERIES) (1-HR. OR 2-HR. FIRE-RATING) (2-HR. SHOWN).
2. [NOT SHOWN] WOOD STUDS TO CONSIST OF NOMINAL 2 x 4 LUMBER. STEEL STUDS TO BE MINIMUM 3-1/2" WIDE.
3. MAXIMUM 2" NOMINAL DIAMETER POLYPROPYLENE (PP) PLASTIC PIPE (SCHEDULE 80) (CLOSED OR VENTED PIPING SYSTEM).
4. PIPE INSULATION TO BE ONE OF THE FOLLOWING :
 - A. NOMINAL 1" THICK AB/PVC PIPE INSULATION.
 - B. NOMINAL 1-1/2" THICK GLASS-FIBER PIPE INSULATION WITH ALL SERVICE JACKET.
 - C. NOMINAL 1-1/2" THICK MINERAL FIBER PIPE INSULATION (MIN. 3.5 PCF DENSITY) WITH FOIL-SCRIM-KRAFT OR ALL SERVICE JACKET.
5. MINIMUM 1/2" DEPTH HILTI FS-ONE MAX INTUMESCENT FIRESTOP SEALANT.
6. HILTI CP 648E WRAP STRIP (NOMINAL 3/16" x 1-3/4" WIDE) CONTINUOUSLY WRAPPED AROUND THE OUTER CIRCUMFERENCE OF THE INSULATED PIPE, COVERING TWO TIMES, WITH ENDS BUTTED AND HELD IN PLACE WITH TAPE. WRAP STRIP TO BE BUTTED TIGHTLY AGAINST BOTH SURFACES OF WALL.
7. HILTI 1-3/4" RETAINING COLLAR WRAPPED OVER THE WRAP STRIPS, OVERLAPPING MINIMUM 1".
8. NOMINAL 1/2" WIDE STAINLESS STEEL HOSE CLAMP FASTENED AT MID-HEIGHT OF RETAINING COLLAR.
9. EVERY OTHER TAB OF RETAINING COLLAR SECURED TO WALL WITH 3/16" x 2-1/2" LONG TOGGLE BOLTS WITH 1-1/4" DIAMETER STEEL WASHERS OR AT EVERY TAB WITH 3/16" x 1-1/4" LONG STEEL LAMINATING SCREWS WITH 1-1/4" DIAMETER STEEL WASHERS.

NOTES : 1. MAXIMUM DIAMETER OF OPENING = 5-7/8".
 2. ANNULAR SPACE = MINIMUM 0", MAXIMUM 1/4".

 Hilti Firestop Systems	HILTI, Inc. Plano, Texas USA (800) 879-8000	Sheet 1 of 1 Scale 1/8" = 1" Date Jan. 23, 2019	Drawing No. cUL WL2043c
	<i>Saving Lives through Innovation and Education</i>		