



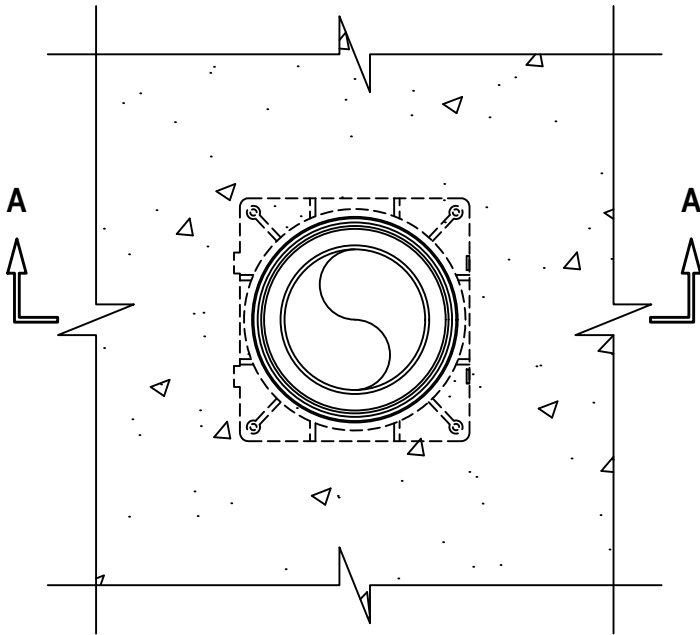
Classified by Underwriters Laboratories, Inc. to UL 1479 and CAN/ULC-S115

System No. F-A-1222

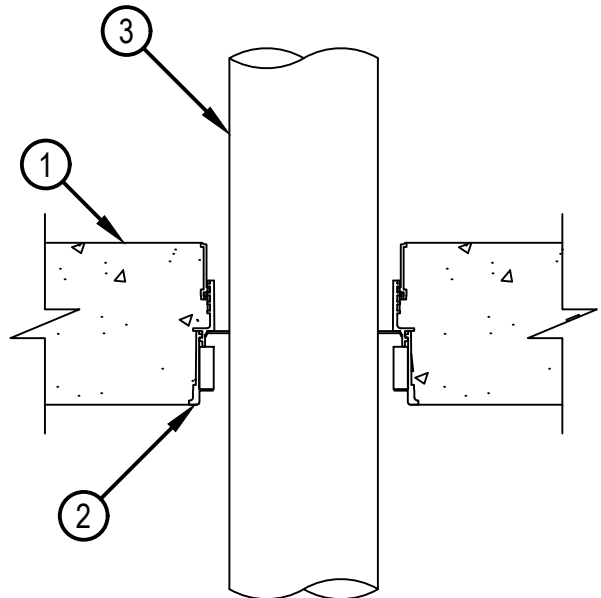
FA 1222

ANSI/UL1479 (ASTM E814)	CAN/ULC S115
F Rating — 3 Hr	F Rating — 3 Hr
T Rating — 0 Hr	FT Rating — 0 Hr
L Rating At Ambient — Less Than 1 CFM/sq ft (See Item 3)	FH Rating — 3 Hr
L Rating At 400 F — Less Than 1 CFM/sq ft (See Item 3)	FTH Rating — 0 Hr
W Rating — Class 1 (See Item 4)	L Rating At Ambient — Less Than 1 CFM/sq ft (See Item 3)
	L Rating At 400 F — Less Than 1 CFM/sq ft (See Item 3)

TOP VIEW



SECTION A-A



Reproduced by HILTI, Inc. Courtesy of Underwriters Laboratories, Inc. May 10, 2024

System No. F-A-1222

1. Floor Assembly — Min 4-1/2 in. (114 mm) thick reinforced lightweight or normal weight (100-150 pcf or 1600-2400 kg/m3) concrete.
2. Firestop Device* — Cast in place firestop device, with optional accessories including sleeve extensions, permanently embedded during concrete placement or grouted in concrete floor assembly in accordance with accompanying installation instructions. The devices may extend a max of 2 in. (51 mm) above the top surface of the concrete.

HILTI CONSTRUCTION CHEMICALS, DIV OF HILTI INC — CFS-CID U 2", CFS-CID U 2" CA, CFS-CID U 3", CFS-CID U 4", CFS-CID U 6"

3. Through Penetrants — One metallic pipe, conduit or tubing to be installed within the firestop device. Pipe, conduit or tubing to be rigidly supported on both sides of floor assembly. The following types of pipe, conduit or tubing may be used:

- A. Steel Pipe — Nom 6 in. (152 mm) diam (or smaller) Schedule 10 (or heavier) steel pipe.
- B. Iron Pipe — Nom 6 in. (152 mm) diam (or smaller) cast or ductile iron pipe.
- C. Conduit — Nom 6 in. (152 mm) diam (or smaller) rigid steel conduit.
- D. Conduit — Nom 4 in. (102 mm) diam (or smaller) steel electrical metallic tubing.
- E. Copper Tubing — Nom 6 in. (152 mm) diam (or smaller) Type L (or heavier) copper tubing.
- F. Copper Pipe — Nom 6 in. (152 mm) diam (or smaller) Regular (or heavier) copper pipe.
- G. Stainless Steel Pipe — Nom 6 in. (152 mm) diam (or smaller) Schedule 10 (or heavier) stainless steel pipe.

The firestop device and metallic penetrant shall be sized as follows:

Nom Pipe Diameter +	Firestop Device
1-1/4 to 2 in. (32 to 51 mm)	CFS-CID U 2", CFS-CID U 2" CA
2- to 3 in. (51 to 76 mm)	CFS-CID U 3"
3 to 4 in. (76 to 102 mm)	CFS-CID U 4"
6 in. (152 mm)	CFS-CID U 6"

+ When metallic pipes of diameters smaller than those shown above are installed within the device, CP618 Firestop Putty Stick (Item 4) or mineral wool insulation (item 4a) shall be installed within the device.

Refer to W & L Rating table below

4. Fill, Void or Cavity Material* - Putty (Optional, Not Shown) — Min 1 in. (25 mm) thickness of fill material applied within annulus flush with top surface of device.

HILTI CONSTRUCTION CHEMICALS, DIV OF HILTI INC — CP 618 Firestop Putty Stick

- 4A. Packing Material (Optional, Not Shown) — As an alternate to Item 4, min 4 in. (102 mm) thickness of min 4 pcf (64 kg/m3) mineral wool insulation firmly packed to the fullest extent possible within annulus flush with top surface of device. When optional sealant (item 5) is used top surface of packing material to be recessed min ¼ in (6mm) or 1/2 in. (13mm) from top surface of device to accommodate sealant.

5. Fill, Void or Cavity Material* — Sealant — (Optional, Not Shown) — Min 1/4 in. (6 mm) thickness of sealant applied within the annulus, flush with the top surface of device. A Min 1/2 in. (13 mm) thickness of sealant applied within the annulus, flush with the top surface of device to attain W-Rating.

HILTI CONSTRUCTION CHEMICALS, DIV OF HILTI INC — CFS-S SIL GG or CFS-S SIL SL Sealant

The W-Rating and L Ratings apply according to the Table Below



System No. F-A-1222

FA 1222

Device size	Penetrant with (IPS) Diam in. (mm)	Penetrant with (CTS) Diam in. (mm)	W RATING	L Rating
CFS-CID U 2", CFS-CID U 2" CA	1-1/4 to 2 (32 to 51)	1-1/2 to 2 (38 to 51)	YES	YES
CFS-CID U 2", CFS-CID U 2" CA	≤2 (51)	≤2 (51)	YES, with Items 4a & 5 Above	YES, with Items 4a & 5 Above
CFS-CID U 3"	2 to 3 (51 to 76)	2-1/2 to 3 (64 to 76)	YES	YES
CFS-CID U 3"	≤3 (76)	≤3 (75)	YES, with Items 4a & 5 Above	YES, with Items 4a & 5 Above
CFS-CID U 4"	3 to 4 (76 to 102)	3-1/2" to 4 (98 to 102)	YES	YES
CFS-CID U 4"	≤4 (102)	≤4 (102)	YES, with Items 4a & 5 Above	YES, with Items 4a & 5 Above
CFS-CID U 4"	6 (152)	6 (152)	YES	YES
CFS-CID U 4"	≤6 (152)	≤6 (152)	YES, with Items 4a & 5 Above	YES, with Items 4a & 5 Above

6. Pipe Tee Fitting System — (Optional, Not Shown) — For use with Iron Pipe (Item 3B) only, One nom 6 in. (152 mm) diam (or smaller) PVC TESTRITE TEE Fitting (matched to penetrant diameter). The PVC TESTRITE TEE Fitting is secured to metallic penetrant (Item 3B) with compression type pipe coupling elastomeric gasket with stainless steel jacket and stainless steel band clamps for use in vented (drain, waste or vent) iron pipe systems. Installed (Item 3B) penetrant shall extend a minimum of 6 in. (152 mm) above the surface of the floor and minimum 12 in. (302 mm) below the bottom surface of the floor above assembly.

* Indicates such products shall bear the UL or cUL Certification Mark for jurisdictions employing the UL or cUL Certification (such as Canada), respectively.



Hilti Firestop Systems

Reproduced by HILTI, Inc. Courtesy of
Underwriters Laboratories, Inc.
May 10, 2024