



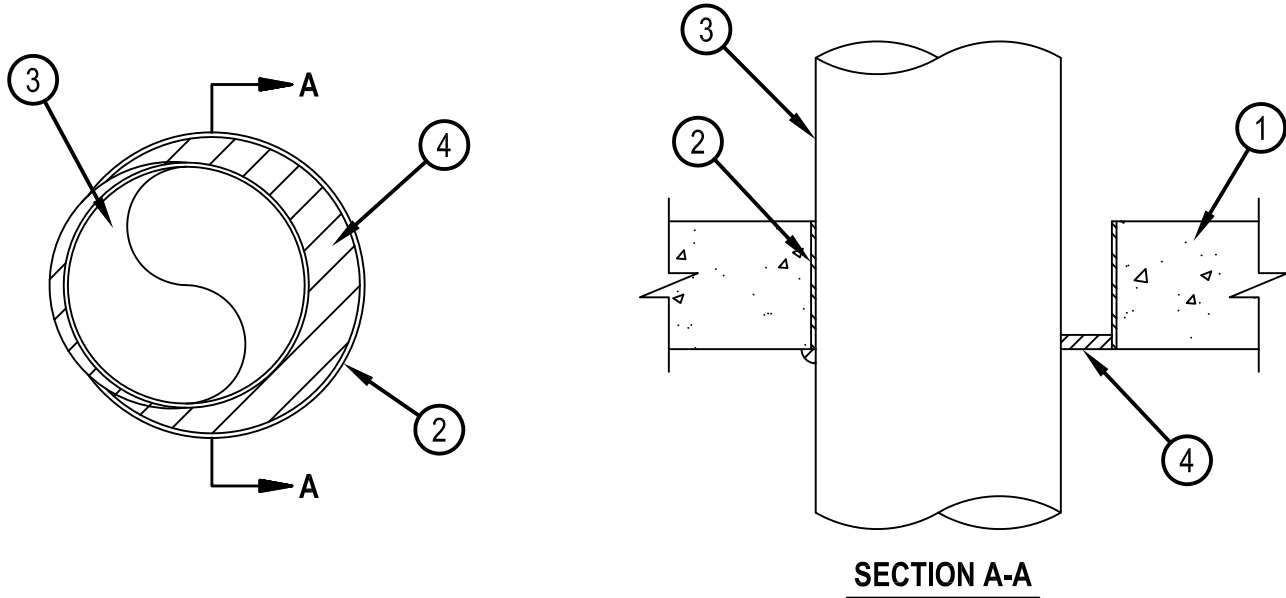
Classified by
Underwriters Laboratories, Inc.
to CAN/ULC-S115

System No. C-AJ-1016

F Rating - 2 Hr
FT Rating - 0 Hr
FH Rating - 0 Hr
FTH Rating - 0 Hr



CAJ 1016



1. Floor or Wall Assembly — Min 114 mm thick reinforced lightweight or normal weight (1600-2400 kg/m³) concrete. Wall may also be constructed of any UL Classified Concrete Blocks*. Floor may also be constructed of any 152 mm thick UL Classified hollow-core Precast Concrete Units. Max diam of opening is 254 mm. When precast concrete units are used the max diam of opening is 178 mm.

See Concrete Blocks (CAZT) and Precast Concrete Units* (CFTV) categories in the Fire Resistance Directory for names of manufacturers.

2. Metallic Sleeve — (Optional in walls or solid concrete floors.) (Not suitable for use in hollow core floors) — Nom 254 mm diam (or smaller) Schedule 10 (or heavier) steel pipe sleeve cast or grouted into floor or wall assembly, flush with floor or wall surfaces.
3. Through Penetrant — One metallic pipe, conduit or tubing to be installed concentrically or eccentrically within opening. The annular space between the through penetrant and the periphery of opening shall be min 0 mm (point contact) to max 48 mm. Through penetrant to be rigidly supported on both sides of floor or wall assembly. The following types and sizes of through penetrants may be used:
HILTI CONSTRUCTION CHEMICALS, DIV OF HILTI INC — FS-ONE Sealant or FS-ONE MAX Intumescent Sealant
- A. Steel Pipe — Nom 203 mm diam (or smaller) Schedule 10 (or heavier) steel pipe.
 - B. Iron Pipe — Nom 203 mm diam (or smaller) cast or ductile iron pipe.
 - C. Copper Tubing — Nom 102 mm diam (or smaller) Type L (or heavier) copper tube.
 - D. Copper Pipe — Nom 102 mm diam (or smaller) Regular (or heavier) copper pipe.
 - E. Conduit — Nom 102 mm diam (or smaller) steel electrical metallic tubing or nom 152 mm diam (or smaller) rigid steel conduit.
4. Fill, Void or Cavity Material* - Sealant — Min 13 mm thickness of sealant applied within the annulus, flush with the bottom surface of floor or with both surfaces of wall. Min 13 mm bead of fill material applied at the concrete/through penetrant interface on bottom surface of floor or both surfaces of wall.

HILTI CONSTRUCTION CHEMICALS, DIV OF HILTI INC — FS-ONE Sealant or FS-ONE MAX Intumescent Sealant

* Indicates such products shall bear the UL or cUL Certification Mark for jurisdictions employing the UL or cUL Certification (such as Canada), respectively.



Hilti Firestop Systems

Reproduced by HILTI, Inc. Courtesy of
Underwriters Laboratories, Inc.

January 06, 2015