



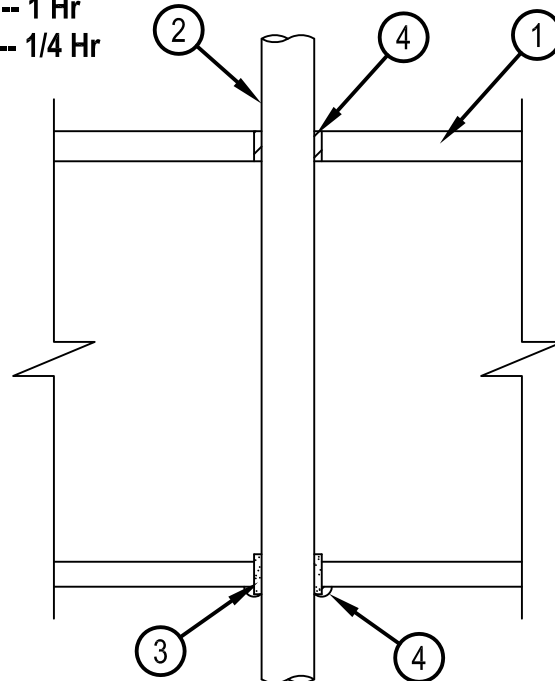
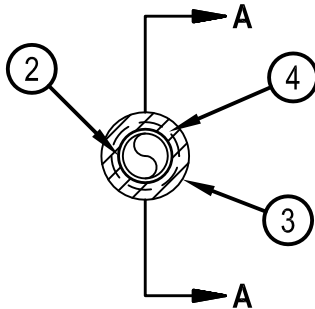
Classified by
Underwriters Laboratories, Inc.
to CAN/ULC-S115

System No. F-C-2005

F Rating -- 1 Hr
FT Rating -- 1/4 Hr
FH Rating -- 1 Hr
FTH Rating -- 1/4 Hr



FC 2005



SECTION A-A

System tested with a pressure differential of 50 Pa between the exposed and the unexposed surfaces with the higher pressure on the exposed side.

1. Floor-Ceiling Assembly — The 1 hr fire-rated solid or trussed lumber joist floor-ceiling assembly shall be constructed of the materials and in the manner specified in the individual L500 Series Floor-Ceiling Designs in the UL Fire Resistance Directory. The general construction features of the floor-ceiling assembly are summarized below:

- A. Flooring System — Lumber or plywood subfloor with finish floor of lumber, plywood or Floor Topping Mixture* as specified in the individual Floor-Ceiling Design. Max diam of opening shall be 1-1/2 in. (38 mm).
- B. Wood Joists* — Nom 10 in. (254 mm) deep (or deeper) lumber, steel or combination lumber and steel joists, trusses or Structural Wood Members* with bridging as required and with ends firestopped.
- C. Gypsum Board* — Nom 5/8 in. (16 mm) thick, 4 ft (122 cm) wide as specified in the individual Floor-Ceiling Design.

2. Through Penetrants — One non-metallic tube to be installed concentrically within the firestop system. Annular space between tube and periphery of opening shall be ¼ in. Tube to be rigidly supported on both sides of floor-ceiling assembly. The following types and sizes of non-metallic tubes or pipes may be used:

- A. Crosslinked Polyethylene (PEX) Tubing — Nom 1 in. (25 mm) diam (or smaller) SDR9 PEX tubing for use in closed (process or supply) or vented (drain, waste or vent) piping systems.
- B. Chlorinated Polyvinyl Chloride (CPVC) Pipe — Nom 25 mm (1 in.) drain (or smaller) SDR 11 CPVC for use in closed (process or supply) piping systems.

IPEX INC — AquaRise

3. Fill, Void or Cavity Materials* - Wrap Strip — Nom 3/16 in. (5 mm) thick by 1 in. (25 mm) wide intumescent wrap strip. One layer of wrap strip tightly wrapped around tube and held in place with tape. Wrap strip centered in annular space extending from both sides of gypsum board.

HILTI CONSTRUCTION CHEMICALS, DIV OF HILTI INC — CP648-E W25/1" Wrap Strip

4. Fill, Void or Cavity Materials* - Sealant — Min 3/4 in. (19 mm) depth of fill material applied within the annulus, flush with the top surface of floor. A 1/4 in. (6 mm) diam bead of fill material shall also be applied at the wrap strip/gypsum board interface.

HILTI CONSTRUCTION CHEMICALS, DIV OF HILTI INC — FS-ONE Sealant or FS-ONE MAX Intumescent Sealant.

* Indicates such products shall bear the UL or cUL Certification Mark for jurisdictions employing the UL or cUL Certification (such as Canada), respectively.



Hilti Firestop Systems

Reproduced by HILTI, Inc. Courtesy of
Underwriters Laboratories, Inc.

January 20, 2015