



Classified by
Underwriters Laboratories, Inc.
to CAN/ULC-S115

System No. HW-D-1002

F Rating — 2 Hr

FT Ratings — 0 Hr

FH Ratings — 0 Hr

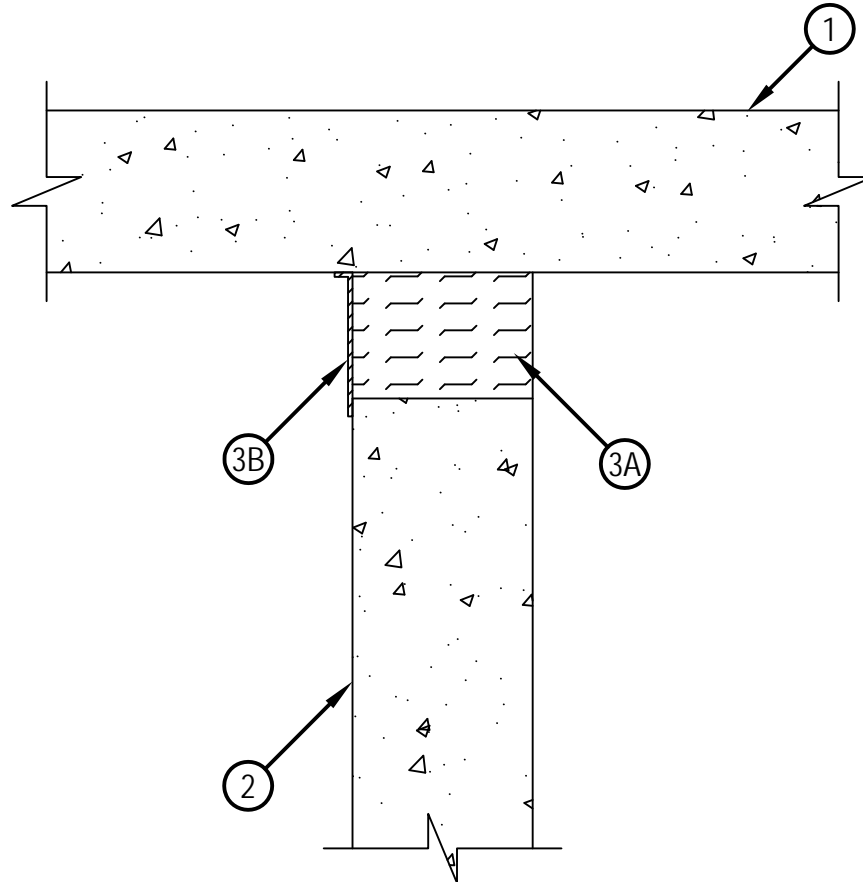
FTH Ratings — 0 Hr

Nominal Joint Width — 3-1/2 in.

Class II Movement Capabilities — 7% Compression Or Extension



HW-D-1002



1. Floor Assembly — Min 4-1/2 in. thick reinforced lightweight or normal weight (100-150 pcf) structural concrete.
2. Wall Assembly — Min 5 in. thick reinforced lightweight or normal weight (100-150 pcf) structural concrete. Wall may also be constructed of any UL Classified Concrete Blocks*.
See Concrete Blocks (CAZT) category in the Fire Resistance Directory for names of manufacturers.
3. Joint System Max separation between bottom of floor and top of wall (at time of installation of joint system) is 3-1/2 in. The joint system is designed to accommodate a max 7 percent in compression or extension from its installed width. — The joint system shall consist of the following:
 - A. Forming Material — Min 4 pcf mineral wool batt insulation installed in joint opening as a permanent form. Pieces of batt cut to min width of 5 in. and installed edge-first into joint opening, parallel with joint direction, such that batt sections are compressed min 42 percent in thickness and that the compressed batt sections flush with both surfaces of wall. Adjoining lengths of batt to be tightly butted with butted seams spaced min 24 in. apart along the length of the joint.
THERMAFIBER INC — Type SAF
 - B. Fill, Void or Cavity Material*—Sealant — Min 1/8 in. wet thickness of fill material sprayed or troweled on one side of wall to completely cover mineral wool forming material and to overlap concrete wall and floor a min 1/2 in.
HILTI CONSTRUCTION CHEMICALS, DIV OF HILTI INC — CP672 Firestop Spray or CFS-SP WB Firestop Joint Spray

*Bearing the UL Classification Mark



Hilti Firestop Systems

Reproduced by HILTI, Inc. Courtesy of
Underwriters Laboratories, Inc.

June 04, 2010