



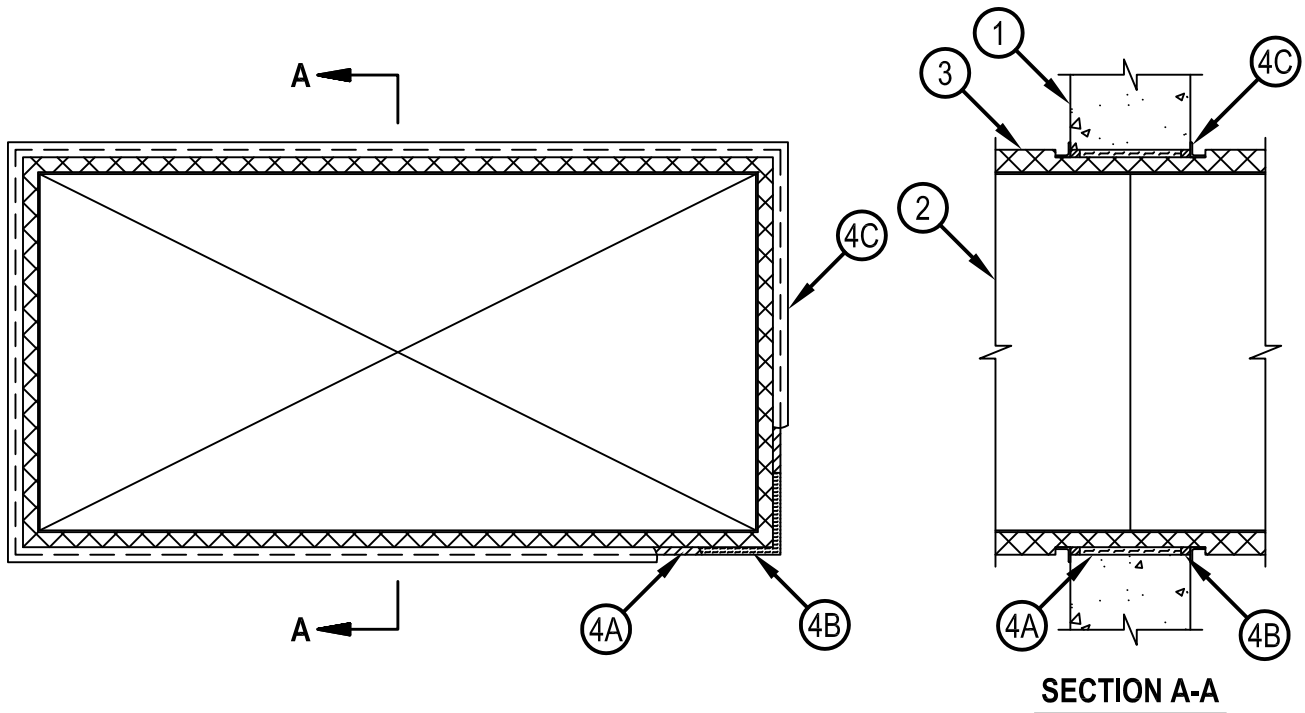
Classified by
Underwriters Laboratories, Inc.
to CAN/ULC-S115

System No. W-J-7001

F Rating — 2 Hr
T Rating — 1/4 Hr
FH Rating — 2 Hr
FTH Rating — 1/4 Hr



WJ 7001



SECTION A-A

1. Wall Assembly — Min 152 mm thick reinforced lightweight or normal weight (1600-2400 kg/m³) concrete. Wall may also be constructed of any UL Classified Concrete Blocks*. Max area of opening is 8884 cm². with the max length or width dimension of 1295 mm.
See Concrete Blocks (CAZT) category in the Fire Resistance Directory for names of manufacturers.
2. Steel Duct — Nom 610 mm by 1219 mm (or smaller) by 0.5 mm thick (or heavier) galv steel duct to be installed within the firestop system. Duct to be rigidly supported on both sides of the wall assembly.
3. Batts and Blankets* — Max 38 mm thick min 12 kg/m³ glass fiber batt or blanket jacketed on the outside with a foil-scrim-kraft facing. Longitudinal and transverse joints sealed with aluminum foil tape. During the installation of the fill material, the batt or blanket shall be compressed 50% such that the annular space within the firestop system shall be min 6 mm to a max 32 mm.
See Batts and Blankets - (BKNV) category in the Building Materials Directory for names of manufacturers. Any batt or blanket meeting the above specifications and bearing the UL Classification Marking with a Flame Spread Index of 25 or less and a Smoke Developed Index 50 or less may be used.
4. Firestop System — The firestop system shall consist of the following:
 - A. Packing Material — Min 89 mm thickness of min 64 kg/m³ mineral wool batt insulation firmly packed into the opening as a permanent form.
Packing material to be recessed from both sides of the wall to accommodate the required thickness of fill material.
 - B. Fill, Void or Cavity Material*—Sealant — Min 16 mm thickness of fill material applied within annulus flush with both surfaces of the wall.
HILTI CONSTRUCTION CHEMICALS, DIV OF HILTI INC — FS-ONE Sealant or FS-ONE MAX Intumescent Sealant.
 - C. Steel Retaining Angle - (Optional) — 1.2 mm thick galv steel angles cut to fit contour of duct with a 51 mm overlap on the duct and a min 25 mm overlap on the gypsum board assembly on both surfaces of wall. 51 mm leg of angle secured to duct with min No. 8 by 19 mm long sheet metal screws, spaced a max of 152 mm OC. When bead of fill material is used at joint contact locations, angles shall be installed prior to full material curing.

* Indicates such products shall bear the UL or cUL Certification Mark for jurisdictions employing the UL or cUL Certification (such as Canada), respectively.



Hilti Firestop Systems

Reproduced by HILTI, Inc. Courtesy of
Underwriters Laboratories, Inc.
January 23, 2015