



Classified by
Underwriters Laboratories, Inc.
to CAN/ULC-S115

System No. W-L-0003

F Ratings - 1 and 2 Hr (See Item 1)

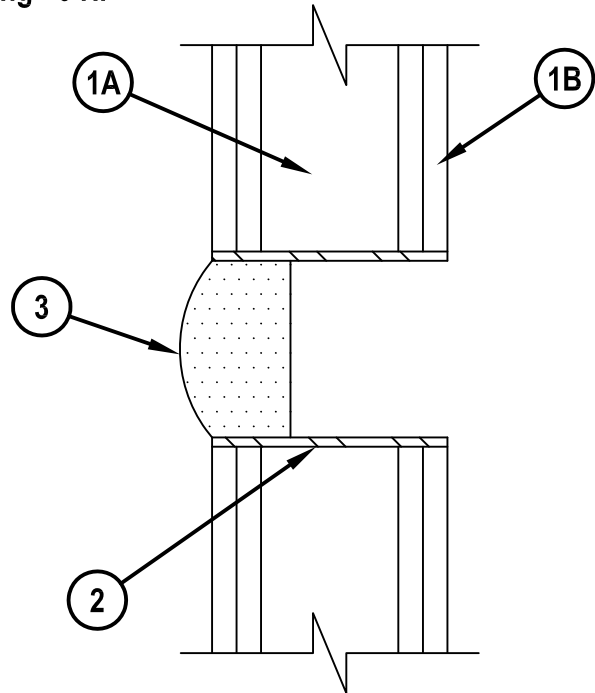
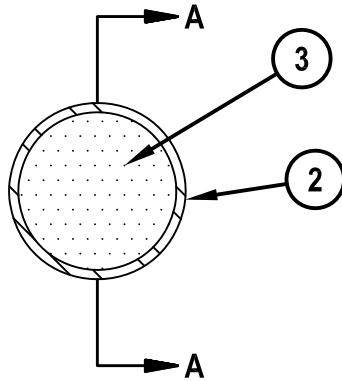
FT Rating - 0 Hr

FH Rating - 0 Hr

FTH Rating - 0 Hr



WL 0003



SECTION A-A

1. Wall Assembly — The 1 or 2 hr fire-rated gypsum board/stud wall assembly shall be constructed of the materials and in the manner specified in the individual U300, U400, V400 or W400 Series Wall and Partition Designs in the Fire Resistance Directory and shall include the following construction features:

A. Studs — Wall framing shall consist of either wood studs or channel shaped steel studs. Wood studs to consist of 51 by 102 mm (2 by 4 in.) lumber spaced max 406 mm (16 in.) OC. Steel studs to be min 89 mm (3-1/2 in.) wide, fabricated from min 25 MSG galvanized steel, spaced max 610 mm (24 in.) OC.

B. Gypsum Board* — Nom 16 mm (5/8 in.) thick with square or tapered edges. The gypsum board type, number of layers and sheet orientation shall be as specified in the individual Wall and Partition Design. Max diam of opening is 140 mm (5-1/2 in.).

The hourly F Rating of the firestop system is equal to the hourly fire rating of the wall assembly in which it is installed.

2. Metallic Sleeve — Nom 102 mm (4 in.) diam (or smaller) Schedule 5 (or heavier) steel pipe sleeve. Sleeve to be flush with wall surfaces or may extend up to 305 mm (12 in.) beyond either or both wall surfaces. The annular space between the steel sleeve and the periphery of the opening shall be min 0 mm (continuous point contact) to max 25 mm (1 in.). Where sleeve extends more than 51 mm (2 in.) beyond the surface of the wall it shall be rigidly supported.

3. Firestop System — The firestop system shall consist of the following:

A. Fill, Void or Cavity Materials* - Plug — Plug sized for the steel sleeve to be friction-fitted within the sleeve flush with either end of sleeve.
HILTI CONSTRUCTION CHEMICALS, DIV OF HILTI INC — CP 658T Firestop Plug or CFS-PL Firestop Plug

B. Fill, Void or Cavity Material* - Sealant — (Not shown) — Min 16 mm (5/8 in.) thickness of fill material applied within the annulus between the sleeve and the periphery of opening, flush with each side of wall. At point contact location, a min 13 mm (1/2 in.) bead of fill material shall be applied at sleeve/wall interface when sleeve extends beyond the surface of the wall.

HILTI CONSTRUCTION CHEMICALS, DIV OF HILTI INC — FS-ONE Sealant or FS-ONE MAX Intumescent Sealant

* Indicates such products shall bear the UL or cUL Certification Mark for jurisdictions employing the UL or cUL Certification (such as Canada), respectively.



Hilti Firestop Systems

Reproduced by HILTI, Inc. Courtesy of
Underwriters Laboratories, Inc.

February 05, 2015