



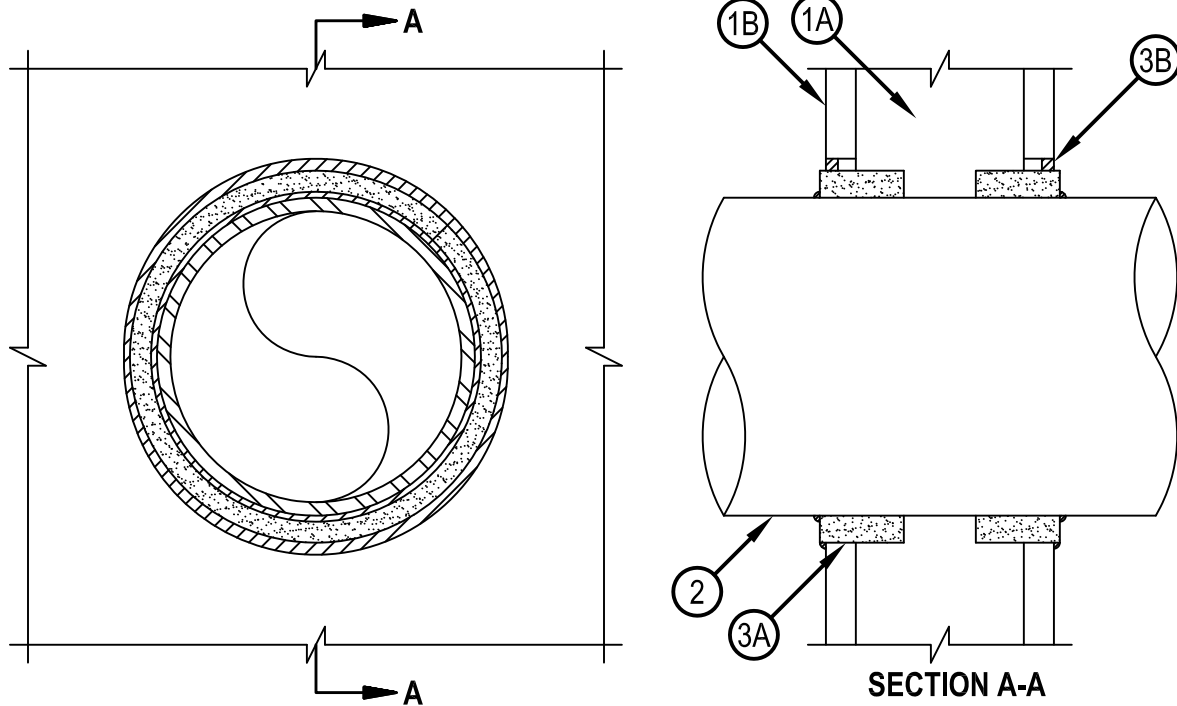
Classified by
Underwriters Laboratories, Inc.
to CAN/ULC-S115

System No. W-L-2032

F Rating -- 1 Hr
FT Rating -- 0 Hr
FH Rating -- 0 Hr
FTH Rating -- 0 Hr



WL 2032



System tested with a pressure differential of 50 Pa between the exposed and the unexposed surfaces with the higher pressure on the exposed side.

1. Wall Assembly — The 1 hr fire-rated gypsum board/stud wall assembly shall be constructed of the materials and in the manner specified in the individual U300, U400, V400 or W400 Series Wall and Partition Designs in the UL Fire Resistance Directory and shall include the following construction features:
 - A. Studs — Wall framing may consist of either wood studs or steel channel studs. Wood studs to consist of nom 51 by 102 mm (2 by 4 in.) lumber spaced 406 mm (16 in. OC). Steel studs to be min 89 mm (3-1/2 in.) wide and spaced max 610 mm (24 in. OC).
 - B. Gypsum Board* — One layer of nom 16 mm (5/8 in.) thick gypsum board as specified in the individual Wall and Partition Design. Max diam of opening is 203 mm (8 in.).
2. Through-Penetrants — One nonmetallic pipe installed within the firestop system. The annular space between the pipe and the periphery of the opening shall be min 14 mm (9/16 in.) to max 21 mm (13/16 in.). Pipe to be rigidly supported on both sides of wall assembly. The following types and sizes of nonmetallic pipes may be used:
 - A. Polyvinyl Chloride (PVC) Pipe — Nom 152 mm (6 in.) diam Schedule 40 cellular or solid core PVC pipe for use in closed (process or supply) or vented (drain, waste or vent) piping system.
 - B. Chlorinated Polyvinyl Chloride (CPVC) Pipe — Nom 152 mm (6 in.) diam SDR 13.5 CPVC pipe for use in closed (process or supply) piping system.
3. Firestop System — The firestop system shall consist of the following:
 - A. Fill, Void or Cavity Material* — Wrap Strip — Nom 13 mm (1/2 in.) thick by 44 mm (1-3/4 in.) wide intumescent wrap strip. The wrap strip is continuously wrapped around the outer circumference of the pipe once and slid into the annular space such that approx 3 mm (1/8 in.) of the wrap strip protrudes from wall surface. Wrap strip is held in place with integral fastening tape. Wrap strip installed on both surfaces of wall.
HILTI CONSTRUCTION CHEMICALS, DIV OF HILTI INC — CP 648S - 6"
 - B. Fill, Void or Cavity Material* — Caulk — Min 6 mm (1/4 in.) thickness of fill material applied within the annulus, flush with both surfaces of wall.
An additional min. 3 mm (1/8 in) bead of fill material also applied at wrap strip/gypsum wall interface and wrap strip/pipe interface.
HILTI CONSTRUCTION CHEMICALS, DIV OF HILTI INC — FS-One Sealant or FS-ONE MAX Intumescent Sealant.

* Indicates such products shall bear the UL or cUL Certification Mark for jurisdictions employing the UL or cUL Certification (such as Canada), respectively.



Hilti Firestop Systems

Reproduced by HILTI, Inc. Courtesy of
Underwriters Laboratories, Inc.
January 26, 2015