

cUL SYSTEM NO. W-J-2247



PLASTIC PIPE THROUGH CONCRETE WALL OR BLOCK WALL ASSEMBLY

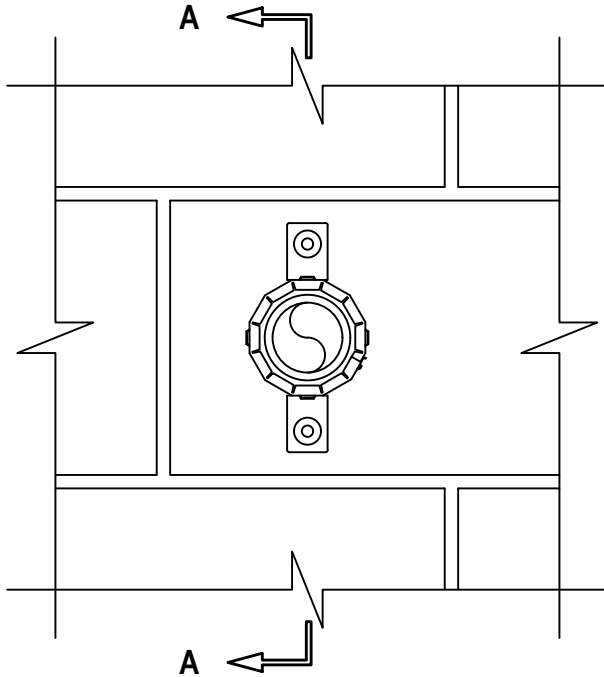
F-RATING = 2-HR.

FT-RATING = 1-1/4-HR.

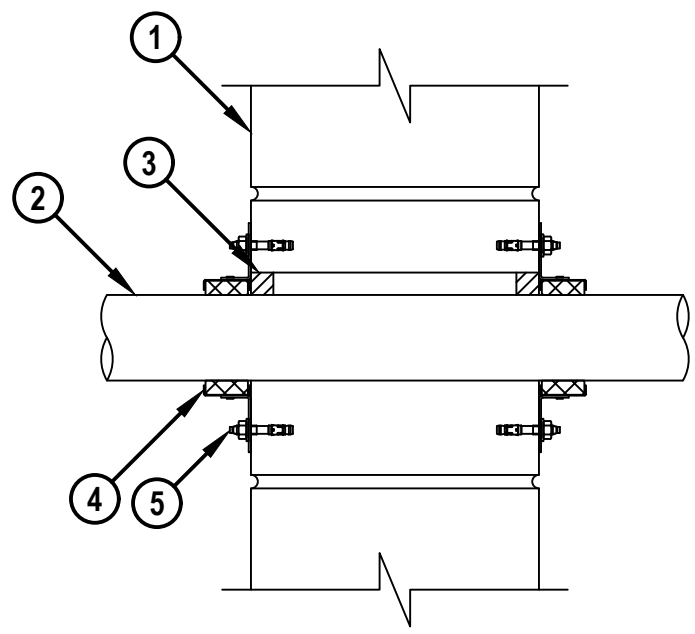
FH AND FTH-RATINGS = 0-HR.

NOTE : TESTED WITH A 50 Pa PRESSURE DIFFERENTIAL

FRONT VIEW



SECTION A-A



cUL WJ2247c-082321



HILTI, Inc.
Plano, Texas USA (800) 879-8000

| | |
|-------|---------------|
| Sheet | 1 of 2 |
| Scale | 3/16" = 1" |
| Date | Aug. 23, 2021 |

Drawing No.
cUL
WJ2247c

Saving Lives through Innovation and Education

PLASTIC PIPE THROUGH CONCRETE WALL OR BLOCK WALL ASSEMBLY

F-RATING = 2-HR.

FT-RATING = 1-1/4-HR.

FH AND FTH-RATINGS = 0-HR.

NOTE : TESTED WITH A 50 Pa PRESSURE DIFFERENTIAL

cUL WJ2247c.082321

1. CONCRETE WALL ASSEMBLY (2-HR. FIRE-RATING) :
 - A. LIGHTWEIGHT OR NORMAL WEIGHT CONCRETE FLOOR OR WALL (MINIMUM 6" THICK).
 - B. ANY UL/cUL CLASSIFIED CONCRETE BLOCK WALL.
2. PENETRATING ITEM TO BE ONE OF THE FOLLOWING :
 - A. MAXIMUM 2" (51 MM OD) NOMINAL DIAMETER POLYPROPYLENE (PP) PLASTIC PIPE (SCHEDULE 80) (CLOSED OR VENTED PIPING SYSTEM).
 - B. MAXIMUM 2" (63 MM OD) NOMINAL DIAMETER AQUATHERM GREENPIPE POLYPROPYLENE (PP-R) PLASTIC PIPE (SDR 7.4 OR 11) (CLOSED OR VENTED PIPING SYSTEM).
 - C. MAXIMUM 2" (63 MM OD) NOMINAL DIAMETER AQUATHERM BLUEPIPE POLYPROPYLENE (PP-RCT) PLASTIC PIPE (SDR 9 OR 11) (CLOSED OR VENTED PIPING SYSTEM).
 - D. MAXIMUM 2" (63 MM OD) NOMINAL DIAMETER NAPSYS-HR PVC PLASTIC PIPE (SCHEDULE 40) (CLOSED OR VENTED PIPING SYSTEM).
3. MINIMUM 5/8" DEPTH HILTI FS-ONE MAX INTUMESCENT FIRESTOP SEALANT.
4. HILTI CP 643N FIRESTOP COLLAR WITH FASTENING HOOKS (SEE TABLE BELOW).
5. SECURE EACH FASTENING HOOK TO WALL ASSEMBLY WITH 1/4" x 1-1/4" LONG STEEL EXPANSION BOLTS, MIN. 0.145" x 1-1/4" POWDER ACTUATED FASTENERS WITH 1-7/16" DIAMETER STEEL WASHER, 1/4" x 1-1/4" HILTI KWIK-CON II+ CONCRETE SCREW ANCHOR, 1/4" x 1-3/4" HILTI KWIK-BOLT 3 STEEL EXPANSION ANCHOR, OR HILTI X-DNI 27 P8 S15 POWDER ACTUATED FASTENER WITH INTEGRATED WASHER.

| NOMINAL PIPE DIAMETER | PRODUCT DESCRIPTION | NO. OF FASTENING HOOKS | MAXIMUM HOLE SIZE |
|-----------------------|---------------------|------------------------|-------------------|
| 1-1/2" | CP 643 50/1.5 N | 2 | 2-1/2" |
| 2" | CP 643 63/2" N | 2 | 3" |

NOTE : ANNULAR SPACE = MINIMUM 0", MAXIMUM 5/8".



HILTI, Inc.
Plano, Texas USA (800) 879-8000

| | |
|-------|---------------|
| Sheet | 2 of 2 |
| Scale | - |
| Date | Aug. 23, 2021 |

Drawing No.

cUL
WJ2247c

Saving Lives through Innovation and Education