

UL/cUL SYSTEM NO. C-AJ-2305

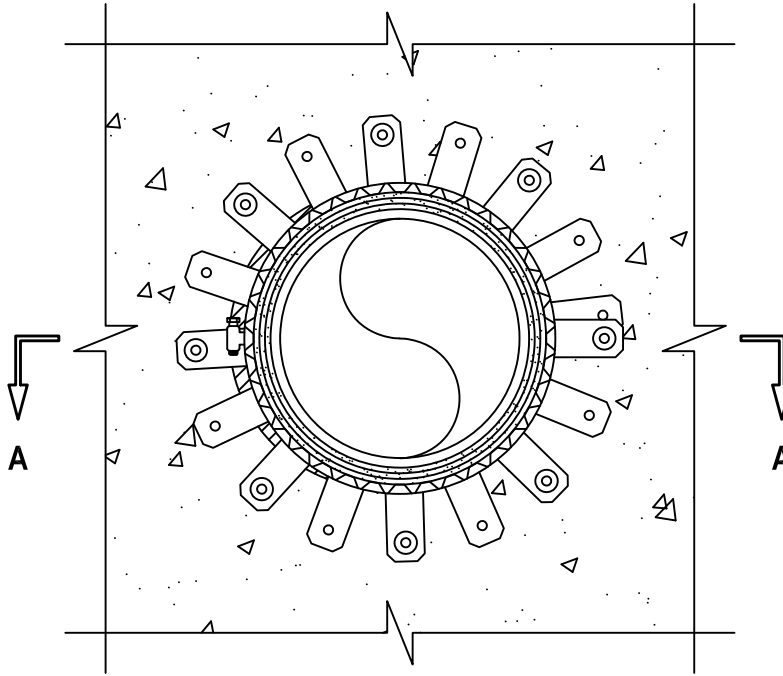
PLASTIC PIPE THROUGH CONCRETE FLOOR/WALL OR BLOCK WALL

F-RATING = 2-HR.

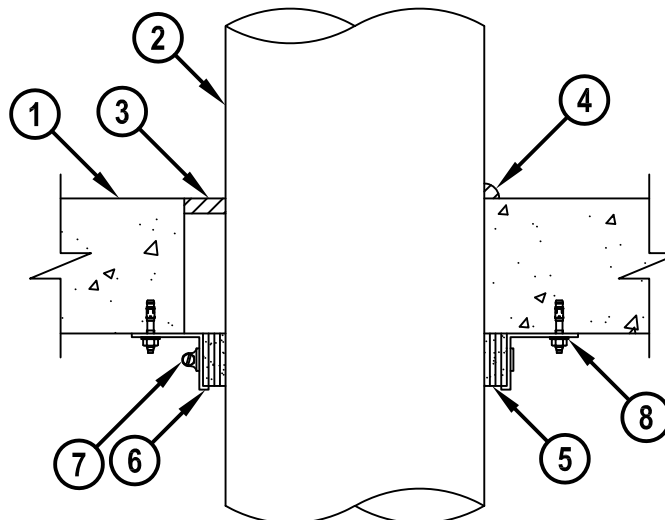
T-RATING = 1-1/2-HR.

NOTE : TESTED TO A 2.5 Pa PRESSURE DIFFERENTIAL

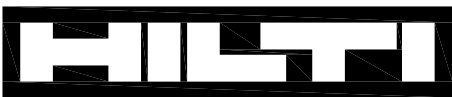
BOTTOM VIEW



SECTION A-A



CAJ2305h.030918



Hilti Firestop Systems

HILTI, Inc.
Plano, Texas USA (800) 879-8000

Sheet	1 of 2
Scale	5/32" = 1"
Date	Mar. 09, 2018

Drawing No.

**CAJ
2305h**

Saving Lives through Innovation and Education

PLASTIC PIPE THROUGH CONCRETE FLOOR/WALL OR BLOCK WALL

F-RATING = 2-HR.

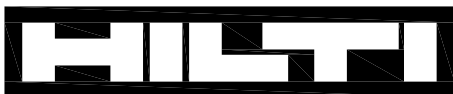
T-RATING = 1-1/2-HR.

NOTE : TESTED TO A 2.5 Pa PRESSURE DIFFERENTIAL

CAJ2305h.030918

1. CONCRETE FLOOR OR WALL ASSEMBLY (2-HR. FIRE-RATING) :
 - A. LIGHTWEIGHT OR NORMAL WEIGHT CONCRETE FLOOR OR WALL (MINIMUM 4-1/2" THICK).
 - B. ANY UL CLASSIFIED CONCRETE BLOCK WALL.
2. PENETRATING ITEM TO BE ONE OF THE FOLLOWING :
 - A. MAXIMUM 8" NOMINAL DIAMETER PVC PLASTIC PIPE (CELLULAR OR SOLID CORE).
 - B. MAXIMUM 8" NOMINAL DIAMETER CPVC PLASTIC PIPE (CLOSED PIPING SYSTEM ONLY).
3. MINIMUM 1/2" DEPTH HILTI FS-ONE MAX INTUMESCENT FIRESTOP SEALANT.
4. MINIMUM 1/4" BEAD HILTI FS-ONE MAX INTUMESCENT FIRESTOP SEALANT APPLIED AT POINT OF CONTACT.
5. HILTI CP 648E WRAP STRIP (NOMINAL 3/16" THICK x 1-3/4" WIDE) INDIVIDUALLY WRAPPED AROUND THE OUTER CIRCUMFERENCE OF THE PIPE, COVERING FOUR TIMES, WITH ENDS BUTTED AND HELD IN PLACE WITH TAPE. WRAP STRIP TO BE BUTTED TIGHTLY AGAINST BOTTOM SURFACE OF FLOOR.
6. HILTI RETAINING COLLAR WRAPPED OVER THE WRAP STRIPS, OVERLAPPING MINIMUM 1".
7. NOMINAL 1/2" WIDE STAINLESS STEEL HOSE CLAMP(S) FASTENED AT MID-HEIGHT OF HILTI RETAINING COLLAR.
8. EVERY OTHER TAB OF RETAINING COLLAR SECURED TO BOTTOM OF FLOOR WITH 1/4" x 1-3/4" LONG STEEL EXPANSION BOLTS, 3/16" x 1-3/4" LONG STEEL CONCRETE SCREW ANCHORS OR 0.145 DIAMETER x 1-1/4" LONG POWDER ACTUATED FASTENERS IN CONJUNCTION WITH 1-7/16" DIAMETER STEEL WASHERS (EX. HILTI KWIK-BOLT 3, KWIK-CON OR DX PINS).

NOTES : 1. MAXIMUM DIAMETER OF OPENING = 10".
 2. ANNULAR SPACE = MINIMUM 0", MAXIMUM 1-3/8".
 3. CLOSED OR VENTED PIPING SYSTEMS (PVC = SCHEDULE 40; CPVC = SDR 13.5).
 4. HILTI CP 648E WRAP STRIP WITH RETAINING COLLAR, AND HILTI FS-ONE MAX INTUMESCENT FIRESTOP SEALANT ARE REQUIRED ON BOTH SIDES OF A WALL.

**Hilti Firestop Systems**

HILTI, Inc.
 Plano, Texas USA (800) 879-8000

Sheet 2 of 2

Scale -

Date Mar. 09, 2018

Drawing No.

CAJ
2305h
Saving Lives through Innovation and Education