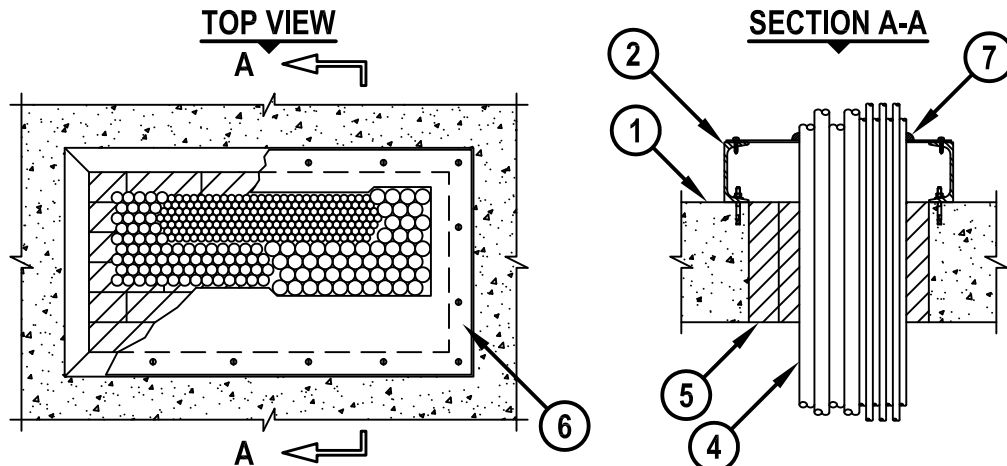


**CABLES THROUGH CONCRETE FLOOR OR WALL ASSEMBLY**

F-RATING = 2-HR.

T-RATING = 0-HR. OR 1 1/2-HR.



1. LIGHTWEIGHT OR NORMAL WEIGHT CONCRETE FLOOR OR WALL (MIN. 8" THICK) (2-HR. FIRE- RATING).
2. NOMINAL 4" X 1-1/2" X 3/16" THICK STRUCTURAL STEEL CHANNEL SHEATHING, SECURED TO CONCRETE FLOOR OR WALL ASSEMBLY.
3. CABLE RACK [NOT SHOWN] : MAX. 20" WIDE LADDER TYPE CABLE RACK, WELDED OR BOLTED TO TOP FLANGE OF SHEATHING CHANNEL.
4. CABLES TO BE A COMBINATION OF ANY OF THE FOLLOWING :
  - A. MAXIMUM 300 PAIR NO. 24 AWG TELEPHONE CABLE.
  - B. MAXIMUM 750 KCMIL SINGLE CONDUCTOR POWER CABLE.
  - C. MAXIMUM (24 FIBER) 1/2" DIAMETER FIBER OPTIC CABLE.
5. HILTI CFS-BL FIRESTOP BLOCK OR HILTI FS 657 FIRE BLOCK (2" THICK x 5" WIDE x 8" DEEP, REFERENCE : TOP VIEW) FIRMLY PACKED AND FLUSH WITH THE TOP SURFACE OF FLOOR, OR EITHER SURFACE OF WALL. EITHER ONE OR A COMBINATION OF THE BLOCK TYPES MAY BE USED.
6. [OPTIONAL] GALVANIZED SHEET METAL COVER PLATE (MIN. 22 GA.) CUT TO FIT THE CONTOUR OF THE CABLE BUNDLE WITHIN 1". COVER PLATE TO BE SECURELY FASTENED TO TOP OF CHANNEL SHEATHING WITH 1/4-20 BOLTS OR SCREWS, OR SOUTHCO® MEDIUM BAIL STYLE QUARTER-TURN STEEL STUD RECEPTACLE FASTENERS (MAX. 12 C/C SPACING). COVER PLATE IS NOT REQUIRED WHEN DISTANCE BETWEEN CABLE BUNDLE AND SHEATHING IS 1" OR LESS (T-RATING IS 0-HR. WHEN COVER PLATE IS NOT USED).
7. WHEN SHEET METAL COVER PLATE IS USED, APPLY MINIMUM 1/2" BEAD HILTI CP 618 FIRESTOP PUTTY STICK OR FS-ONE MAX OR FS-ONE INTUMESCENT FIRESTOP SEALANT AT CABLE/COVER PLATE INTERFACE, OR APPLY HILTI CP 617 FIRESTOP PUTTY PAD AROUND PERIPHERY OF CABLE BUNDLE, EXTENDING MINIMUM 2" ONTO CABLES AND OVERLAPPING COVER PLATE BY MINIMUM 1/2".

**NOTES :** 1. MAXIMUM SIZE OF OPENING = 24" x 12".  
 2. ANNULAR SPACE = MINIMUM 1".  
 3. CABLES TO FILL MAXIMUM 34% OF CROSS-SECTIONAL AREA OF OPENING.  
 4. APPLY HILTI CP 618 FIRESTOP PUTTY STICK OR FS-ONE MAX OR FS-ONE INTUMESCENT FIRESTOP SEALANT INTO INTERSTICES OF CABLES, AND ANY VOIDS TO MAX. EXTENT POSSIBLE.

CBJ4026g.010815



HILTI, Inc.  
 Tulsa, Oklahoma USA (800) 879-8000

Sheet	1 of 1
Scale	5/64" = 1"
Date	Jan. 08, 2015

Drawing No.  
**CBJ  
 4026g**