

UL/cUL SYSTEM NO. FF-D-1012

FIRE-RATED JOINT THROUGH CONCRETE FLOOR ASSEMBLY

ASSEMBLY RATING = 2-HR.

CLASS II MOVEMENT CAPABILITIES - 7% COMPRESSION OR EXTENSION

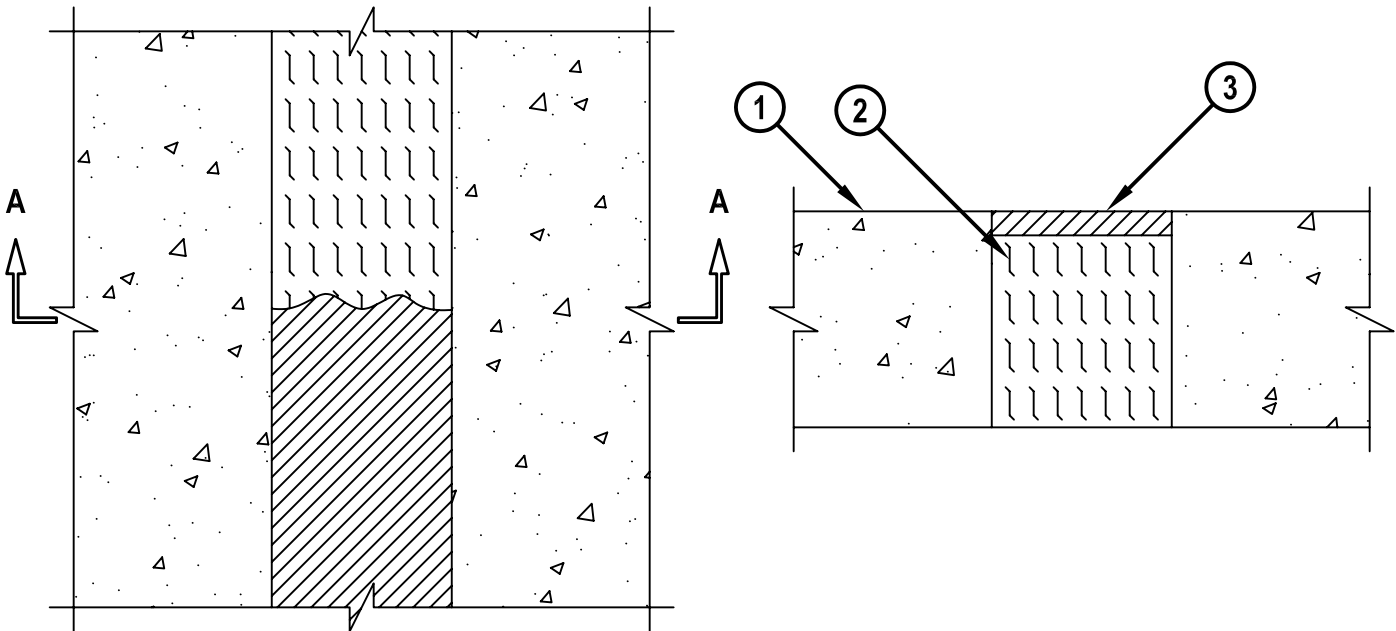
L-RATING AT AMBIENT - LESS THAN 1 CFM/LINEAR FOOT

L-RATING AT 400° F - LESS THAN 1 CFM/LINEAR FOOT

FFD1012fg.063003

TOP VIEW

SECTION A-A



1. CONCRETE FLOOR ASSEMBLY (MIN. 4-1/2" THICK) (2-HR. FIRE-RATING).
2. MINIMUM 4" THICKNESS MINERAL WOOL (MIN. 4 PCF DENSITY) COMPRESSED MINIMUM 42%.
3. MINIMUM 1/2" DEPTH HILTI CP 606 FLEXIBLE FIRESTOP SEALANT.

NOTE : MAXIMUM WIDTH OF JOINT = 3-3/4".

HILTI®
FIRESTOP SYSTEMS

HILTI, Inc.
Tulsa, Oklahoma USA (918) 252-6000

Sheet	1 of 1
Scale	1/4" = 1"
Date	June 30, 2003

Drawing No.

FFD
1012g

Saving Lives through Innovation and Education