

CONCRETE STAIR ASSEMBLY TO CONCRETE WALL/BLOCK WALL ASSEMBLY

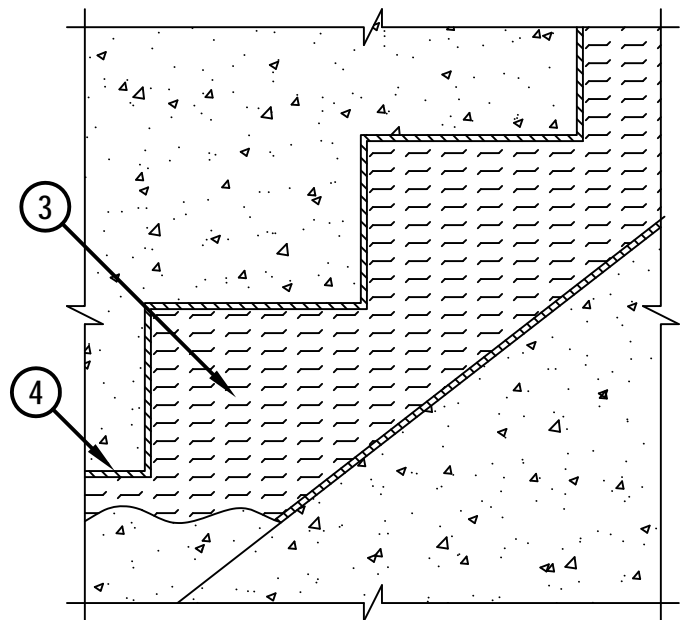
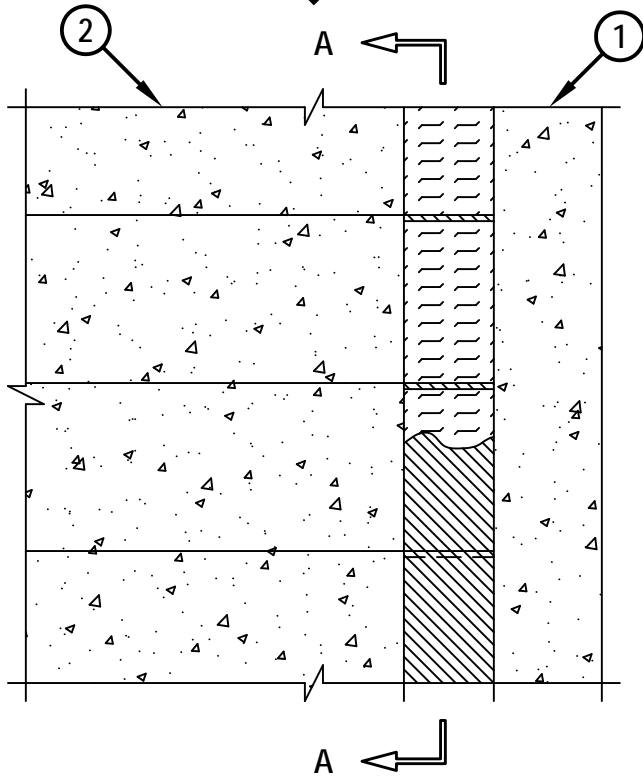
ASSEMBLY RATING = 2-HR.

CLASS II MOVEMENT CAPABILITIES - 14% COMPRESSION OR EXTENSION

FWD1046b.021414

FRONT VIEW

SECTION A-A



1. CONCRETE WALL ASSEMBLY (2-HR. FIRE-RATING) :
 - A. LIGHTWEIGHT OR NORMAL WEIGHT CONCRETE WALL (MINIMUM 4-1/2" THICK).
 - B. ANY UL/ULC CLASSIFIED CONCRETE BLOCK WALL.
2. LIGHTWEIGHT OR NORMAL WEIGHT CONCRETE STAIR ASSEMBLY (MINIMUM 4-1/2" THICK) (2-HR. FIRE-RATING).
3. MINIMUM 4" THICKNESS MINERAL WOOL SAFING (MIN. 4 PCF DENSITY) COMPRESSED MINIMUM 42%.
4. MINIMUM 1/4" DEPTH HILTI CFS-S SIL GG FIRESTOP SILICONE SEALANT OR HILTI CP 601S ELASTOMERIC FIRESTOP SEALANT FLUSH WITH TOP AND BOTTOM SURFACES OF STAIR ASSEMBLY.

NOTE : WIDTH OF JOINT = MINIMUM 1/4" , MAXIMUM 3-3/4" .



HILTI, Inc.
Tulsa, Oklahoma USA (800) 879-8000

Sheet	1 of 1
Scale	3/32" = 1"
Date	Feb. 14, 2014

Drawing No.
**FWD
1046b**