

TOP OF WALL JOINT : GYPSUM WALL ASSEMBLY

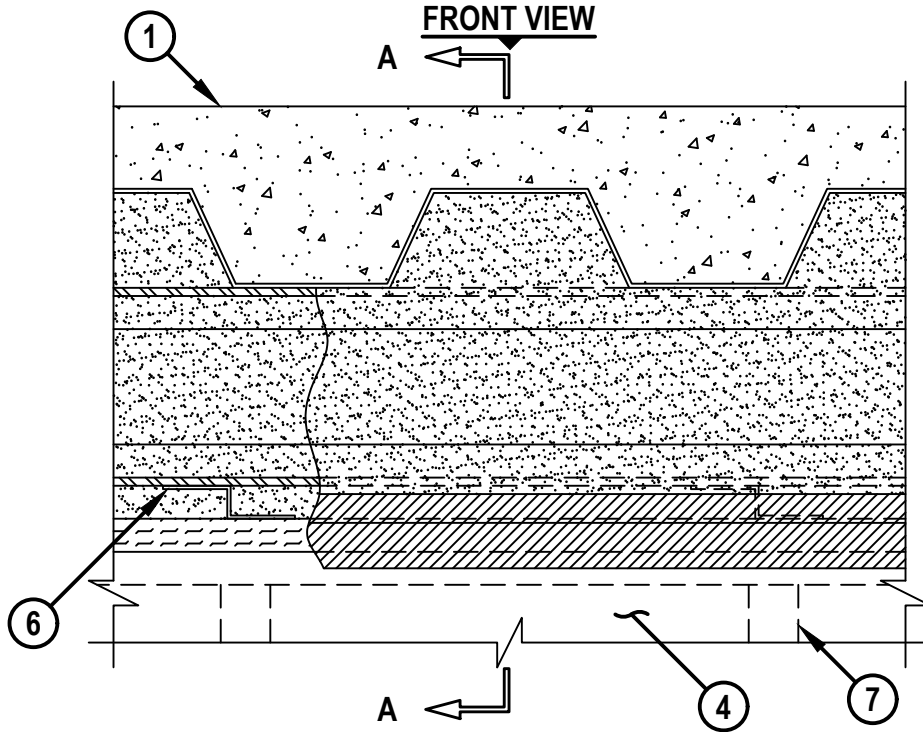
ASSEMBLY RATING = 1-HR. OR 2-HR. (DEPENDING ON RATING OF WALL AND FLOOR ASSEMBLY)

CLASS II MOVEMENT CAPABILITIES - 50% COMPRESSION OR EXTENSION

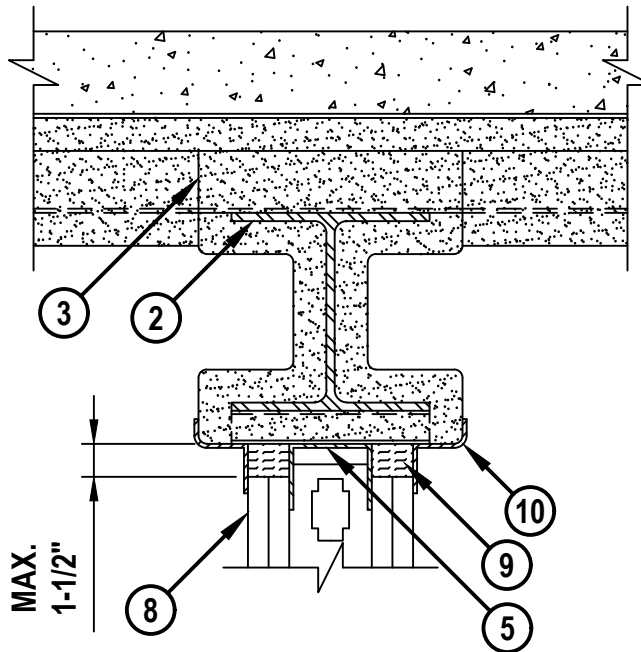
L-RATING AT AMBIENT = LESS THAN 1 CFM / LIN FT

L-RATING AT 400°F = LESS THAN 1 CFM / LIN FT

HW-D-0259q-032823



SECTION A-A



HILTI, Inc.
Plano, Texas USA (800) 879-8000

Sheet	1 of 2
Scale	11/64" = 1"
Date	Mar. 28, 2023

Drawing No.
**HWD
0259q**

TOP OF WALL JOINT : GYPSUM WALL ASSEMBLY

ASSEMBLY RATING = 1-HR. OR 2-HR. (DEPENDING ON RATING OF WALL AND FLOOR ASSEMBLY)
 CLASS II MOVEMENT CAPABILITIES - 50% COMPRESSION OR EXTENSION
 L-RATING AT AMBIENT = LESS THAN 1 CFM / LIN FT
 L-RATING AT 400°F = LESS THAN 1 CFM / LIN FT

HWD0259q-032823

1. LIGHTWEIGHT OR NORMAL WEIGHT CONCRETE FLOOR (MINIMUM 2-1/2" THICK) OVER METAL DECKING (1-HR. OR 2-HR. FIRE-RATING).
2. STRUCTURAL STEEL BEAM, AS SPECIFIED IN THE INDIVIDUAL D700 OR D900 SERIES FLOOR/CEILING DESIGN, CENTERED AND ORIENTED PARALLEL TO WALL ASSEMBLY (SEE NOTE NO. 4 BELOW).
3. UL CLASSIFIED MONOKOTE TYPE MK-6/HY OR MK-10BH (MANUFACTURED BY GCP APPLIED TECHNOLOGIES) OR TYPE 300 OR TYPE 400 (MANUFACTURED BY ISOLATEK, INT.) FIREPROOFING SPRAYED TO THE THICKNESS SPECIFIED IN THE INDIVIDUAL D700 OR D900 SERIES DESIGN. FIREPROOFING TO COMPLETELY FILL FLUTES ABOVE STRUCTURAL STEEL BEAM.
4. GYPSUM WALL ASSEMBLY (UL/cUL CLASSIFIED U400 OR V400 SERIES) (1-HR. OR 2-HR. FIRE-RATING) (2-HR. SHOWN).
5. CEILING RUNNER (MIN. 25 GA., FLANGE HEIGHT OF CEILING RUNNER SHALL BE MINIMUM 1/4" GREATER THAN MAXIMUM EXTENDED JOINT WIDTH) SECURED TO STEEL BEAM THROUGH SPRAY- APPLIED FIRE RESISTIVE MATERIAL WITH STEEL FASTENERS (SPACED MAX. 24" OC) (SEE NOTE NO. 2 BELOW).
6. [OPTIONAL] CEILING RUNNER MAY BE SECURED TO STEEL BEAM WITH Z-SHAPED CLIPS (MIN 20 GA) : MINIMUM 1" LONG, BUT NOT EXCEEDING THE WIDTH OF THE WALL. CLIPS TO BE SIZED TO EXTEND THROUGH THE THICKNESS OF THE FIREPROOFING WITH 1-1/2" OR 2" LONG UPPER AND LOWER LEGS. SUPPORT CLIPS SPACED MAXIMUM 16" OC.
7. STEEL STUDS (MINIMUM 3-1/2" WIDE), CUT 3/4" TO 1-1/4" LESS IN LENGTH THAN ASSEMBLY HEIGHT, NESTING IN CEILING RUNNER WITHOUT ATTACHMENT.
8. NOMINAL 5/8" THICK GYPSUM WALLBOARD. TYPE, NUMBER OF LAYERS, AND SHEET ORIENTATION AS SPECIFIED IN THE INDIVIDUAL UL DESIGN. THE TOP ROW OF SCREWS SHALL BE INSTALLED INTO THE STUDS 1-1/2" BELOW THE BOTTOM OF THE CEILING RUNNER.
9. HILTI CP 767 SPEED STRIPS COMPRESSED 50% AND INSERTED INTO JOINT, FLUSH WITH WALL SURFACES (SEE NOTE NO. 3 BELOW).
10. MINIMUM 1/8" (WET) THICKNESS HILTI CFS-SP WB FIRESTOP JOINT SPRAY TO COMPLETELY COVER MINERAL WOOL WITHIN JOINT. HILTI FIRESTOP SPRAY TO OVERLAP MINIMUM 1/2" ONTO GYPSUM WALL ASSEMBLY AND MINIMUM 2" ONTO FIREPROOFING ON BOTH SIDES OF WALL ASSEMBLY.

NOTES :

1. MAXIMUM WIDTH OF JOINT = 1-1/2".
2. AS AN ALTERNATE TO CEILING RUNNER IN ITEM 5, SLOTTED CEILING RUNNERS MAY BE USED. CONSULT THE UL FIRE RESISTANCE DIRECTORY FOR APPROVED MANUFACTURERS.
3. AS AN ALTERNATE TO HILTI CP 767 SPEED STRIPS, MINERAL WOOL SAFING (MIN. 4 PCF DENSITY) COMPRESSED 50%, MAY BE USED.
4. THE TOTAL THICKNESS OF FIREPROOFING APPLIED TO EACH SIDE OF THE STEEL BEAM WEB SHALL BE MINIMUM 13/16" THICKNESS FOR A 1-HR. ASSEMBLY RATING AND MINIMUM 1-3/8" THICKNESS FOR A 2-HR. ASSEMBLY RATING, WHEN USING MONOKOTE TYPE MK-6/HY OR MK-10HB, AND MINIMUM 11/16" THICKNESS FOR A 1-HR. ASSEMBLY RATING AND MINIMUM 1-1/2" THICKNESS FOR A 2-HR. ASSEMBLY RATING WHEN USING TYPE 300 OR TYPE 400.



HILTI, Inc.
 Plano, Texas USA (800) 879-8000

Sheet	2 of 2
Scale	-
Date	Mar. 28, 2023

Drawing No.
**HWD
 0259q**