

UL/cUL SYSTEM NO. HW-D-0264

TOP OF WALL JOINT : GYPSUM WALL ASSEMBLY

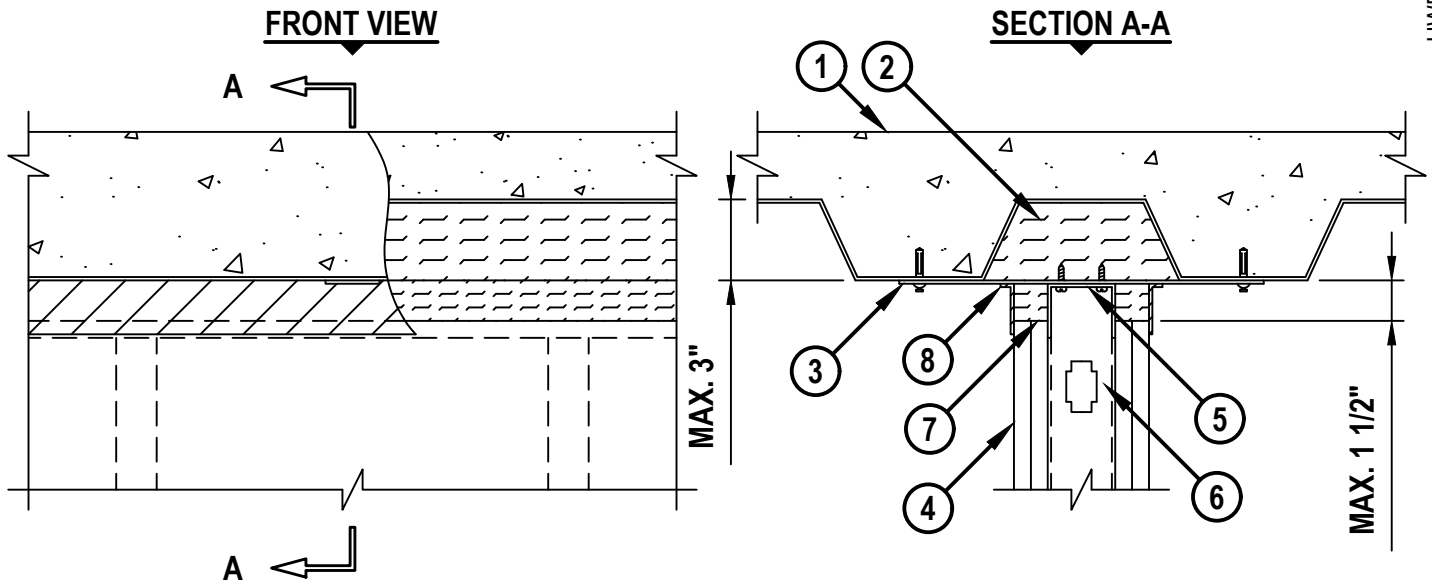
ASSEMBLY RATING = 1-HR. OR 2-HR.

CLASS II MOVEMENT CAPABILITIES - 50% COMPRESSION OR EXTENSION

L-RATING AT AMBIENT = LESS THAN 1 CFM / LIN FT

L-RATING AT 400°F = LESS THAN 1 CFM / LIN FT

HW-D-0264h.121120



1. FLOOR OR ROOF ASSEMBLY (1-HR. OR 2-HR. FIRE-RATING) :

- A. LIGHTWEIGHT OR NORMAL WEIGHT CONCRETE FLOOR (MIN. 2-1/2" THICK) OVER METAL DECKING (UL/cUL CLASSIFIED D700 OR D900 SERIES).
- B. INSULATING CONCRETE (MIN. 2-1/4" THICK) OVER METAL DECKING (UL/cUL CLASSIFIED P900 SERIES).
- C. [NOT SHOWN] FLUTED STEEL ROOF DECK WITH SPRAY-APPLIED FIREPROOFING (UL/cUL CLASSIFIED P700 SERIES).



HILTI, Inc.
Plano, Texas USA (800) 879-8000

Sheet	1 of 2
Scale	9/64" = 1"
Date	Dec. 11, 2020

Drawing No.
**HWD
0264h**

Saving Lives through Innovation and Education

UL/cUL SYSTEM NO. HW-D-0264

TOP OF WALL JOINT : GYPSUM WALL ASSEMBLY

ASSEMBLY RATING = 1-HR. OR 2-HR.

CLASS II MOVEMENT CAPABILITIES - 50% COMPRESSION OR EXTENSION

L-RATING AT AMBIENT = LESS THAN 1 CFM / LIN FT

L-RATING AT 400°F = LESS THAN 1 CFM / LIN FT

HWDD0264h.121120

2. HILTI CP 777 SPEED PLUGS FRICTION FITTED TO COMPLETELY FILL FLUTES. ADJACENT LENGTHS OF SPEED PLUGS TO BE TIGHTLY BUTTED WITH SEAMS SPACED MINIMUM 24" APART ALONG LENGTH OF THE PLUGS (SEE NOTE NO. 5 BELOW).
3. MINIMUM 2" WIDE, 16 GA., STEEL STRAPS CUT TO A LENGTH TO SPAN THE FLUTE AND OVERLAP THE ADJACENT VALLEYS BY 1-1/2". STEEL STRAPS SPACED MAXIMUM 24" ON CENTER AND FASTENED TO FLOOR ASSEMBLY WITH APPROPRIATE HILTI ANCHORS (1/4" DIAMETER x 1-1/2" LONG) OR 1" LONG HILTI X-U 27 P8S15 POWDER ACTUATED FASTENERS WITH 9/16" DIAMETER STEEL WASHERS OR WITH MASONRY ANCHORS OR STEEL FASTENERS.
4. GYPSUM WALL ASSEMBLY (UL/cUL CLASSIFIED U400, V400, OR W400 SERIES) (1-HR. OR 2-HR. FIRE-RATING).
5. CEILING RUNNER (MIN. 25 GA. WITH 2" FLANGES) INSTALLED PARALLEL TO DIRECTION OF STEEL FLOOR UNITS AND SECURED TO STEEL STRAPS WITH TWO NO. 8 SELF-DRILLING, SELF-TAPPING STEEL SCREWS PER STRAP.
6. STEEL STUDS (MIN. 2-1/2" WIDE), CUT 1/2" TO 3/4" LESS IN LENGTH THAN ASSEMBLY HEIGHT, NESTING IN CEILING RUNNER WITHOUT ATTACHMENT.
7. HILTI CP 767 SPEED STRIPS OR MINERAL WOOL SAFING (MIN. 4 PCF DENSITY) COMPRESSED 50% AND INSERTED INTO JOINT, FLUSH WITH BOTH SIDES OF WALL.
8. MINIMUM 1/8" (WET) THICKNESS HILTI CFS-SP WB FIRESTOP JOINT SPRAY TO COMPLETELY COVER MINERAL WOOL AND TO OVERLAP A MINIMUM 1/2" ONTO GYPSUM WALL, STEEL STRAPS, AND METAL DECK.

- NOTES :**
1. MAXIMUM WIDTH OF JOINT = 1-1/2".
 2. STEEL FLOOR UNITS MAY BE SPRAYED WITH A MINIMUM 5/16" TO MAXIMUM 1-3/4" THICKNESS OF UL CLASSIFIED MONOKOTE TYPE MK-6/HY (MANUFACTURED BY GCP APPLIED TECHNOLOGIES) OR CAFCO TYPE 300 (MANUFACTURED BY ISOLATEK, INT.) FIREPROOFING, PRIOR TO INSTALLATION OF CEILING RUNNERS.
 3. WHEN THE STEEL DECK IS COATED WITH FIREPROOFING, HILTI FIRESTOP JOINT SPRAY SHALL OVERLAP THE WALL A MINIMUM 1/2" AND OVERLAP THE FIREPROOFING A MINIMUM 2" ON BOTH SIDES OF GYPSUM WALL ASSEMBLY.
 4. AS AN ALTERNATE TO CEILING RUNNER IN ITEM NO. 3, SLOTTED CEILING RUNNERS MAY BE USED. CONSULT THE UL FIRE RESISTANCE DIRECTORY FOR APPROVED MANUFACTURERS.
 5. AS AN ALTERNATE TO HILTI CP 777 SPEED PLUGS (ITEM 2), MINERAL WOOL SAFING (MIN. 4 PCF DENSITY) MAY BE CUT TO THE SHAPE OF THE FLUTED FLOOR TO COMPLETELY FILL THE FLUTES ABOVE STRAPS. ADJACENT LENGTHS OF SAFING TO BE TIGHTLY BUTTED WITH SEAMS SPACED 24" APART ALONG LENGTH OF FLUTES. ALTERNATELY, FLUTE MAY BE FILLED WITH FIREPROOFING ABOVE THE STRAPS.



Hilti Firestop Systems

HILTI, Inc.
Plano, Texas USA (800) 879-8000

Sheet 2 of 2

Scale -

Date Dec. 11, 2020

Drawing No.

**HWD
0264h**

Saving Lives through Innovation and Education