

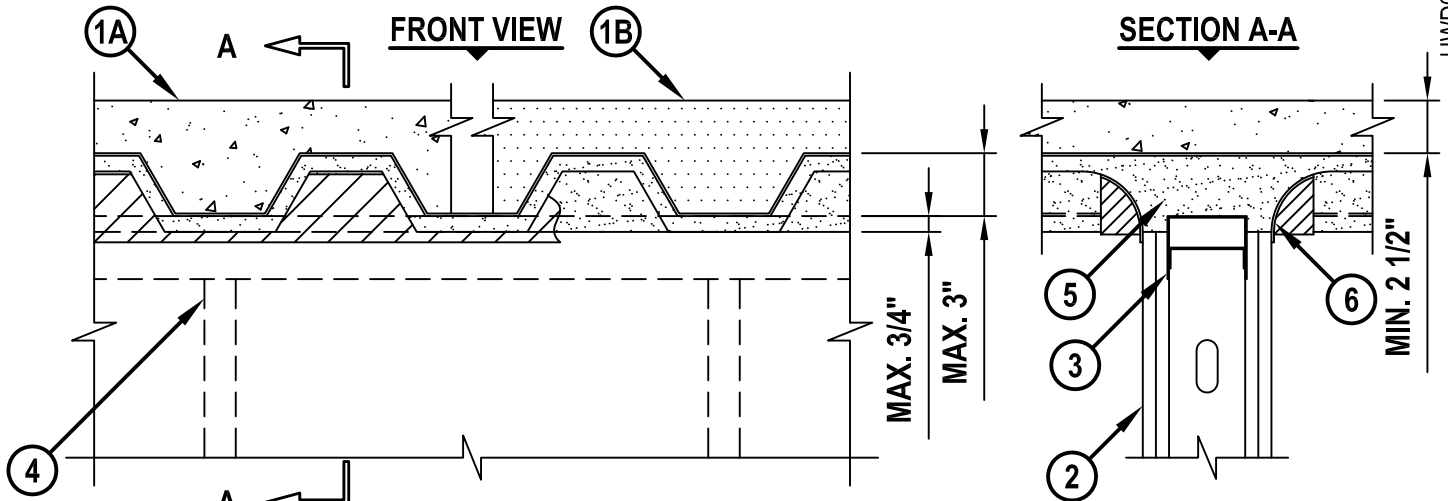
TOP OF WALL JOINT : GYPSUM WALL ASSEMBLY

ASSEMBLY RATING = 2-HR.

CLASS II MOVEMENT CAPABILITIES - 33% COMPRESSION OR EXTENSION

L-RATING AT AMBIENT = LESS THAN 1 CFM/LIN FT

L-RATING AT 400°F = LESS THAN 1 CFM/LIN FT



HWD0313e.062910

1. FLOOR OR ROOF ASSEMBLY (2-HR. FIRE-RATING) :
 - A. LIGHTWEIGHT OR NORMAL WEIGHT CONCRETE FLOOR (MINIMUM 2-1/2" THICK) OVER METAL DECKING (UL/cUL CLASSIFIED D700 SERIES).
 - B. FLUTED STEEL ROOF DECK WITH SPRAY-APPLIED FIREPROOFING (UL/cUL CLASSIFIED P700 SERIES).
2. GYPSUM WALL ASSEMBLY (UL/cUL CLASSIFIED U400 SERIES) (2-HR. FIRE-RATING).
3. CEILING RUNNER DEFLECTION CHANNEL FASTENED TO UNDERSIDE OF DECK PRIOR TO APPLYING FIREPROOFING (ALSO SEE NOTE BELOW).
4. STEEL STUDS (MINIMUM 3-5/8" WIDE), CUT 1/2" TO 3/4" LESS IN LENGTH THAN ASSEMBLY HEIGHT. WHEN DEFLECTION CHANNEL IS USED, STUDS ATTACHED TO CEILING RUNNER WITH SHEET METAL SCREWS. WHEN DEFLECTION CHANNEL IS NOT USED, STUDS SHOULD NEST IN CEILING RUNNER WITHOUT ATTACHMENT.
5. STEEL FLOOR UNITS TO BE SPRAYED WITH MINIMUM 3/4" THICKNESS UL CLASSIFIED MONOKOTE TYPE MK-6/HY FIREPROOFING (MANUFACTURED BY W.R. GRACE & CO.) OR TYPE 300 FIREPROOFING (MANUFACTURED BY ISOLATEK, INT.). FIREPROOFING TO COMPLETELY FILL FLUTES WITHIN JOINT SYSTEM, OVERLAPPING A MINIMUM 1" ONTO GYPSUM BOARD. FIREPROOFING TO FORM A RADIUS OF MINIMUM 3" FROM STEEL FLOOR UNITS TO JOINT SYSTEM.
6. MINIMUM 1/8" (WET) THICKNESS HILTI CFS-SP WB FIRESTOP JOINT SPRAY OR HILTI CP 672 SPEED SPRAY TO COMPLETELY COVER RADIUS FORMED FROM FIREPROOFING AND OVERLAPPING A MINIMUM 1/2" ONTO GYPSUM ON BOTH SIDES OF WALL ASSEMBLY.

NOTE : AS AN ALTERNATE TO CEILING RUNNER IN ITEM NO. 3, CEILING RUNNERS MANUFACTURED BY BRADY CONSTRUCTION INNOVATIONS, INC., DBA SLIPTRACK SYSTEMS, METAL-LITE, INC., TOTAL STEEL SOLUTIONS, THE STEEL NETWORK, INC., CLARKWESTERN BUILDING SYSTEM, INC., SCAFCO, OR TELLING INDUSTRIES LLC, MAY BE USED. WHEN ALTERNATE CEILING TRACKS ARE USED, CONSULT THE UL FIRE RESISTANCE DIRECTORY FOR INSTALLATION INSTRUCTIONS.



HILTI, Inc.
Tulsa, Oklahoma USA (800) 879-8000

Sheet	1 of 1
Scale	7/64" = 1"
Date	June 29, 2010

Drawing No.
**HWD
0313e**