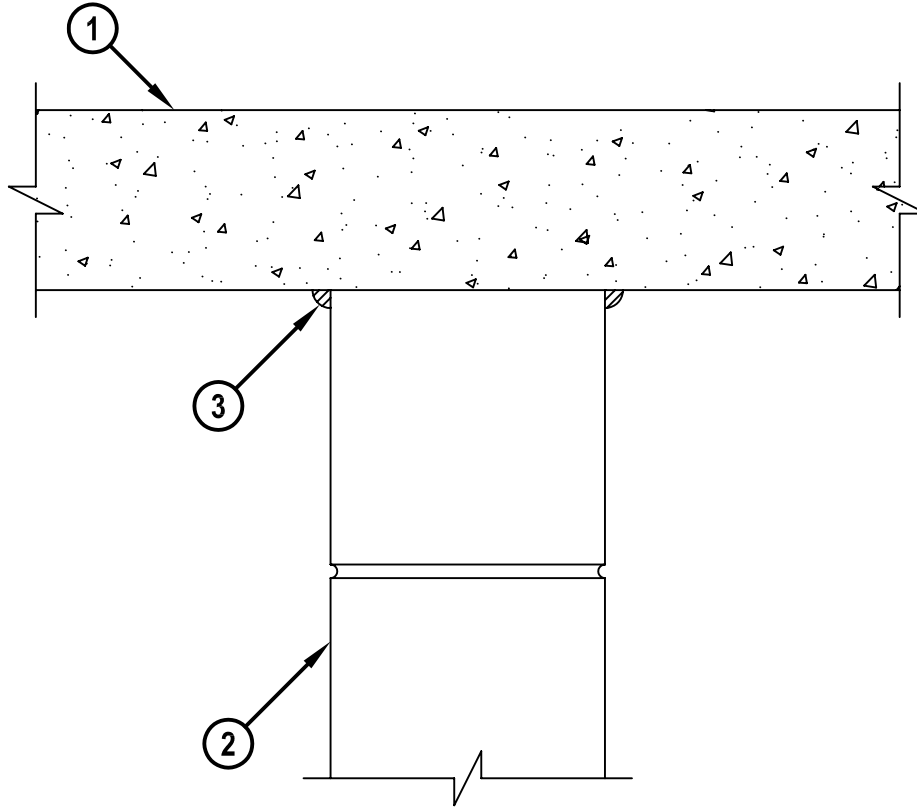


**FIRE-RATED JOINT THROUGH CONCRETE WALL OR BLOCK WALL ASSEMBLY**

ASSEMBLY RATING = 2-HR.  
L-RATING AT AMBIENT - LESS THAN 1 CFM/LINEAR FOOT  
L-RATING AT 400° F - LESS THAN 1 CFM/LINEAR FOOT

**CROSS-SECTIONAL VIEW**



HWS0055b.063003

1. CONCRETE FLOOR ASSEMBLY (2-HR. FIRE-RATING) :
  - A. LIGHTWEIGHT OR NORMAL WEIGHT CONCRETE FLOOR ASSEMBLY (MIN. 4-1/2" THICK).
  - B. ANY UL/ULC CLASSIFIED PRE-CAST HOLLOW CORE CONCRETE FLOOR ASSEMBLY (MIN. 6" THICK).
2. CONCRETE WALL ASSEMBLY (2-HR. FIRE-RATING) :
  - A. LIGHTWEIGHT OR NORMAL WEIGHT CONCRETE WALL (MIN. 4-1/2" THICK).
  - B. ANY UL/ULC CLASSIFIED CONCRETE BLOCK WALL.
3. MINIMUM 1/2" BEAD HILTI CP 606 FLEXIBLE FIRESTOP SEALANT.

**NOTE : MAXIMUM HEIGHT OF JOINT = 0".**

**HILTI**<sup>®</sup>  
**FIRESTOP SYSTEMS**

HILTI, Inc.  
Tulsa, Oklahoma USA (918) 252-6000

Sheet	1 of 1
Scale	3/16" = 1"
Date	June 30, 2003

Drawing No.

**HWS**  
**0055b**

*Saving Lives through Innovation and Education*