

BLANK OPENING THROUGH CONCRETE WALL OR CONCRETE BLOCK WALL

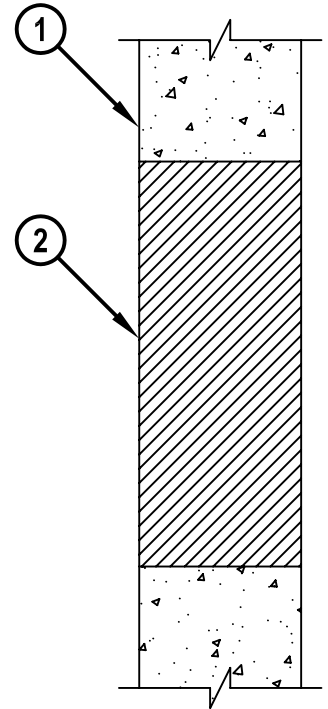
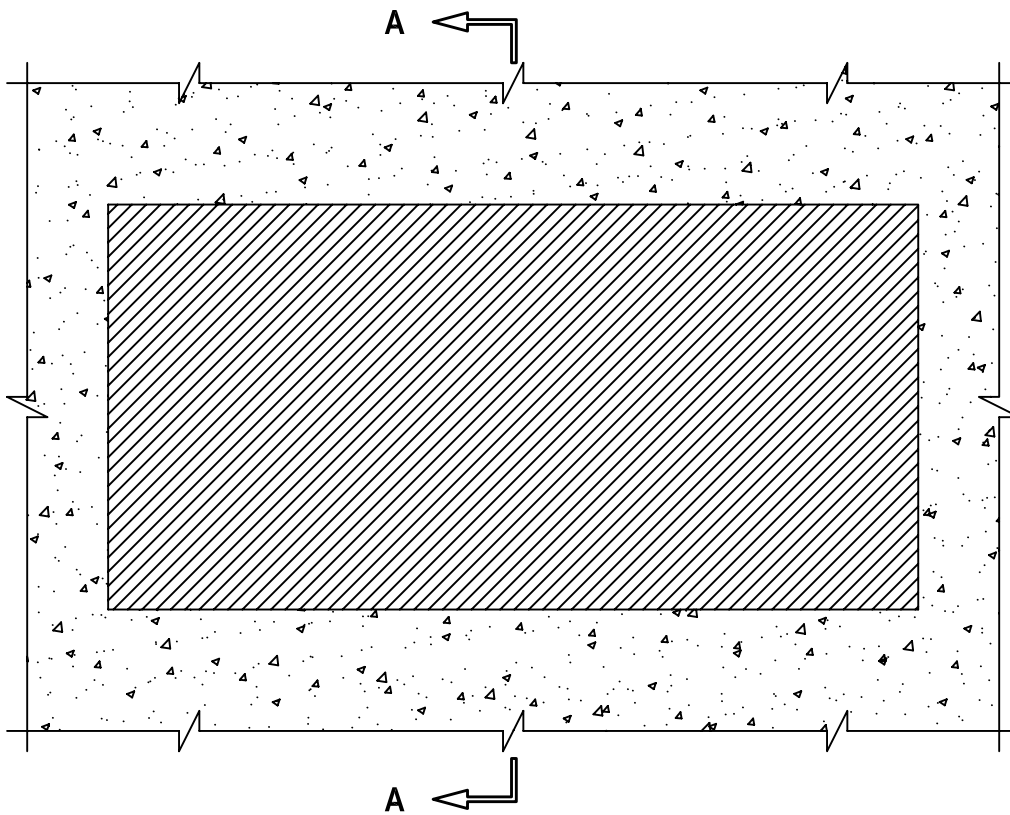
F-RATING = 1-HR. OR 2-HR.

T-RATING = 1-HR. OR 2-HR.

WJ0006a.071602

FRONT VIEW

SECTION A-A



1. CONCRETE WALL ASSEMBLY (1-HR. OR 2-HR. FIRE-RATING) (2-HR. SHOWN).
 - A. LIGHT WEIGHT OR NORMAL WEIGHT CONCRETE WALL (MIN. 4-3/4" THICK, FOR A 1-HR. FIRE-RATING).
 - B. LIGHT WEIGHT OR NORMAL WEIGHT CONCRETE WALL (MIN. 6" THICK, FOR A 2-HR. FIRE-RATING).
 - C. ANY UL/cUL CLASSIFIED SOLID OR FILLED CONCRETE BLOCK WALL.
2. HILTI CP 620 FIRE FOAM INSTALLED FLUSH WITH BOTH SURFACES OF THE WALL :
 - A. MINIMUM 4-3/4" THICKNESS, FOR A 1-HR. FIRE-RATING.
 - B. MINIMUM 6" THICKNESS, FOR A 2-HR. FIRE-RATING.

NOTE : MAXIMUM SIZE OF OPENING = 30" x 15".



HILTI, Inc.
Tulsa, Oklahoma USA (918) 252-6000

Sheet	1 of 1
Scale	9/64" = 1"
Date	July 16, 2002

Drawing No.
WJ
0006a