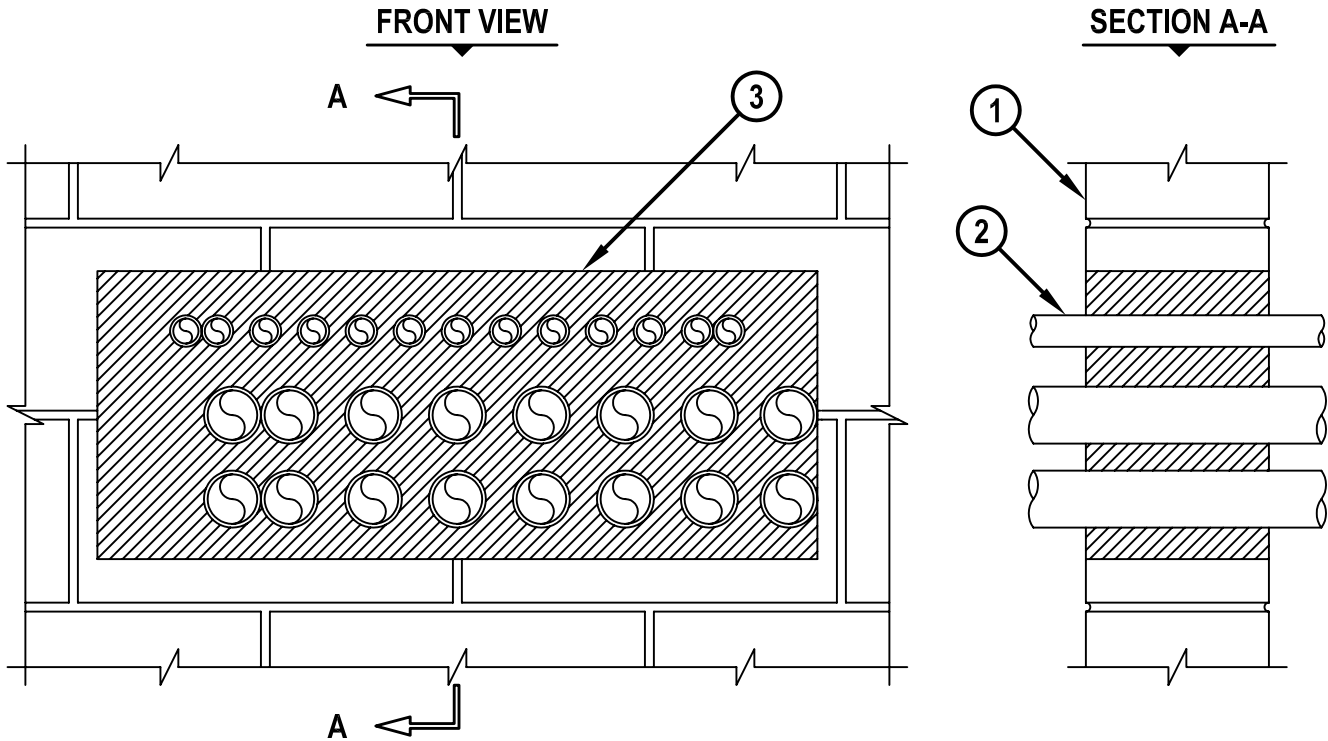


**MULTIPLE METAL PIPES THROUGH CONCRETE WALL OR
CONCRETE BLOCK WALL ASSEMBLY**

F-RATING = 1-HR. OR 2-HR.
T-RATING = 0-HR.

WJ1116a.012302



1. CONCRETE WALL ASSEMBLY (1-HR. OR 2-HR. FIRE-RATING) :
 - A. LIGHTWEIGHT OR NORMAL WEIGHT CONCRETE WALL (MIN. 4-3/4" THICK, FOR A 1-HR. FIRE-RATING).
 - B. LIGHTWEIGHT OR NORMAL WEIGHT CONCRETE WALL (MIN. 6" THICK, FOR A 2-HR. FIRE-RATING).
 - C. ANY UL/ULC CLASSIFIED SOLID OR FILLED CONCRETE BLOCK WALL.
2. PENETRATING ITEMS TO BE ONE OR MORE OF THE FOLLOWING :
 - A. MAXIMUM 2" NOMINAL DIAMETER STEEL CONDUIT.
 - B. MAXIMUM 2" NOMINAL DIAMETER EMT.
3. HILTI CP 620 FIRE FOAM INSTALLED FLUSH WITH BOTH SURFACES OF THE WALL :
 - A. MINIMUM 4-3/4" THICKNESS, FOR A 1-HR. FIRE-RATING.
 - B. MINIMUM 6" THICKNESS, FOR A 2-HR. FIRE-RATING.

NOTES : 1. MAXIMUM SIZE OF OPENING = 30" x 12".
 2. ANNULAR SPACE BETWEEN PIPES = MINIMUM 0", MAXIMUM 3-3/8".
 3. ANNULAR SPACE BETWEEN PIPES AND PERIPHERY OF OPENING = MINIMUM 0", MAXIMUM 3".



HILTI, Inc.
Tulsa, Oklahoma USA (918) 252-6000

Sheet	1 of 1
Scale	1/8" = 1"
Date	Jan. 23, 2002

Drawing No.

WJ
1116a