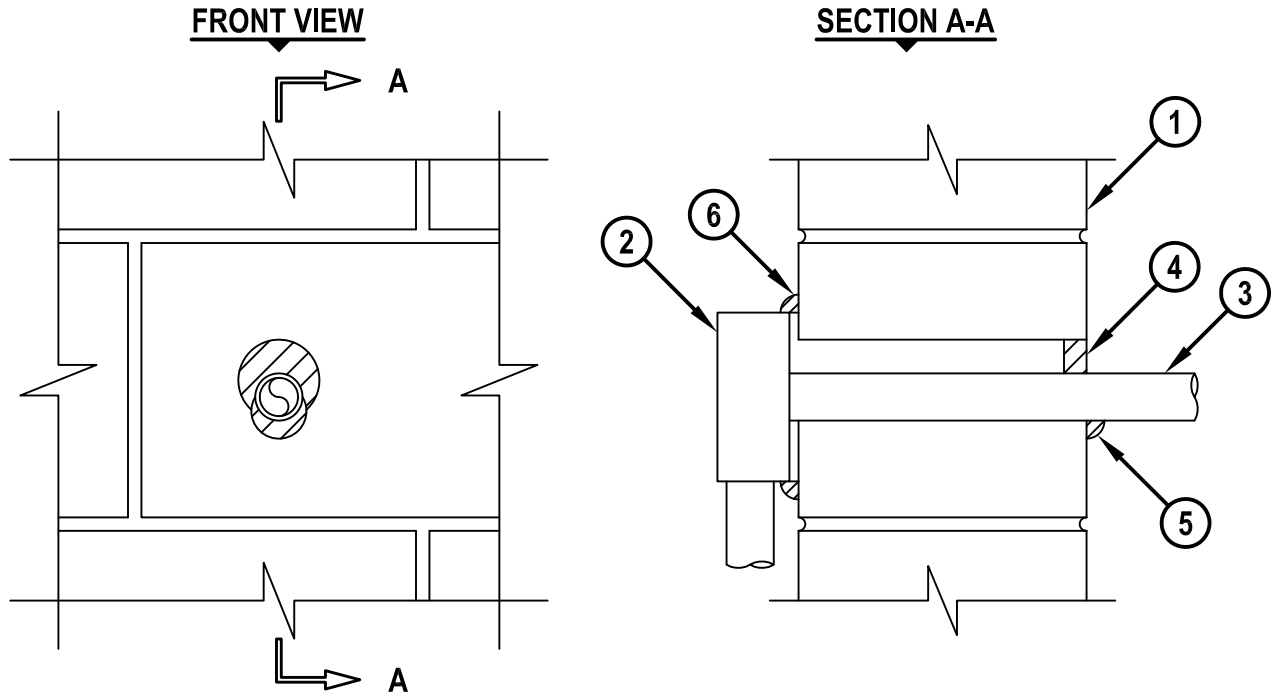


**METAL PIPE THROUGH CONCRETE WALL OR BLOCK WALL ASSEMBLY**

F-RATING = 2-HR.

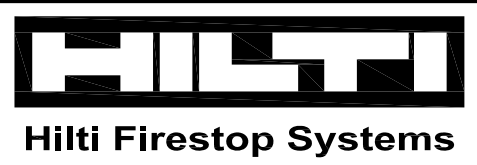
T-RATING = 0-HR.

WJ1214b.010815



1. CONCRETE WALL ASSEMBLY (2-HR. FIRE-RATING) :
  - A. LIGHTWEIGHT OR NORMAL WEIGHT CONCRETE WALL (MINIMUM 5-5/8" THICK).
  - B. ANY UL/cUL CLASSIFIED CONCRETE BLOCK WALL.
2. STEEL PULL OR JUNCTION BOX (MIN. 16 GA.) MOUNTED FLUSH OR MAXIMUM 1/4" FROM WALL SURFACE.
3. MAXIMUM 1" NOMINAL DIAMETER STEEL CONDUIT OR EMT.
4. MINIMUM 5/8" DEPTH HILTI FS-ONE MAX OR FS-ONE INTUMESCENT FIRESTOP SEALANT.
5. MINIMUM 1/2" BEAD HILTI FS-ONE MAX OR FS-ONE INTUMESCENT FIRESTOP SEALANT APPLIED AT POINT OF CONTACT.
6. MINIMUM 1/2" BEAD HILTI FS-ONE MAX OR FS-ONE INTUMESCENT FIRESTOP SEALANT APPLIED AROUND ENTIRE PERIMETER OF PULL OR JUNCTION BOX, OVERLAPPING MINIMUM 1/2" ONTO WALL AND PULL OR JUNCTION BOX.

**NOTES : 1. DIAMETER OF OPENING TO BE MINIMUM 1/2" LARGER THAN OUTSIDE DIAMETER OF PENETRANT, WITH A MAXIMUM DIAMETER OF 2-1/4".**  
**2. ANNULAR SPACE = MINIMUM 0", MAXIMUM 1-1/8".**



HILTI, Inc.  
 Tulsa, Oklahoma USA (800) 879-8000

Sheet	1 of 1
Scale	3/16" = 1"
Date	Jan. 08, 2015

Drawing No.  
**WJ**  
**1214b**