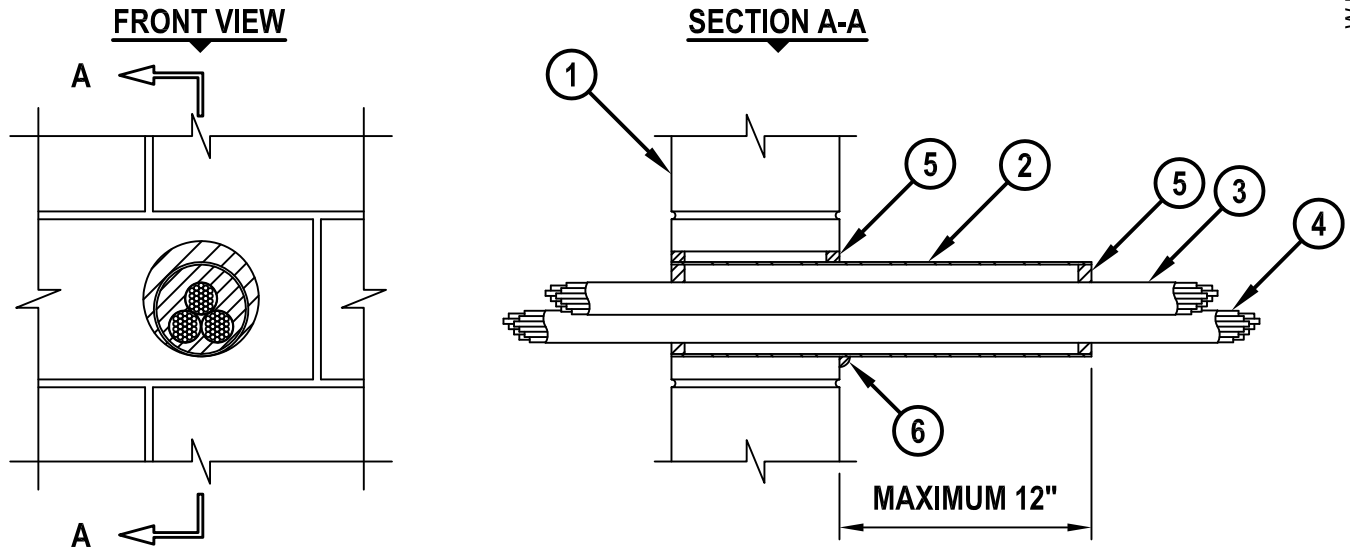


**CABLE BUNDLE WITHIN NYLON RACEWAY THROUGH  
CONCRETE OR BLOCK WALL ASSEMBLY**

F-RATING = 2-HR.  
T-RATING = 0-HR. OR 1-HR.

WJ2241a.051712



1. CONCRETE WALL ASSEMBLY (2-HR. FIRE-RATING) :
  - A. LIGHTWEIGHT OR NORMAL WEIGHT CONCRETE WALL (MINIMUM 6" THICK).
  - B. ANY UL/cUL CLASSIFIED CONCRETE BLOCK WALL.
2. [OPTIONAL] MAXIMUM 4" NOMINAL DIAMETER STEEL PIPE (SCHEDULE 5 OR HEAVIER), STEEL CONDUIT OR EMT SLEEVE.
3. MAXIMUM 3" DIAMETER FLEXIBLE NYLON OPTICAL FIBER/COMMUNICATIONS CABLE ROUTING ASSEMBLY (UL LISTED FOR PLENUM INSTALLATION) WITH A MAXIMUM OF THREE 1-1/2" DIAMETER CELLS.
4. CABLE BUNDLE TO BE A COMBINATION OF ANY OF THE FOLLOWING :
  - A. MAXIMUM 100 PAIR NO. 24 AWG TELEPHONE CABLE WITH PVC JACKET.
  - B. MAXIMUM 24 FIBER OPTIC CABLE WITH PVC JACKET.
5. MINIMUM 5/8" DEPTH HILTI CP 618 FIRESTOP PUTTY STICK.
6. MINIMUM 1/2" BEAD HILTI CP 618 FIRESTOP PUTTY STICK APPLIED AT WALL/SLEEVE INTERFACE WHEN STEEL SLEEVE EXTENDS BEYOND ONE OR BOTH SIDES OF WALL.

**NOTES :** 1. MAXIMUM DIAMETER OF OPENING = 5-1/2".  
 2. ANNULAR SPACE BETWEEN STEEL SLEEVE AND PERIPHERY OF OPENING = MINIMUM 0", MAXIMUM 1".  
 3. ANNULAR SPACE BETWEEN CABLES INSIDE OF SLEEVE = MINIMUM 0", MAXIMUM 3".  
 4. CABLES TO FILL MAXIMUM 80% EACH CELL OF FLEXIBLE NYLON CABLE ROUTING ASSEMBLY.  
 5. CABLES TO FILL MAXIMUM 60% CROSS-SECTIONAL AREA OF SLEEVE.



HILTI, Inc.  
Tulsa, Oklahoma USA (800) 879-8000

Sheet	1 of 1
Scale	7/64" = 1"
Date	May 17, 2012

Drawing No.

**WJ  
2241a**