

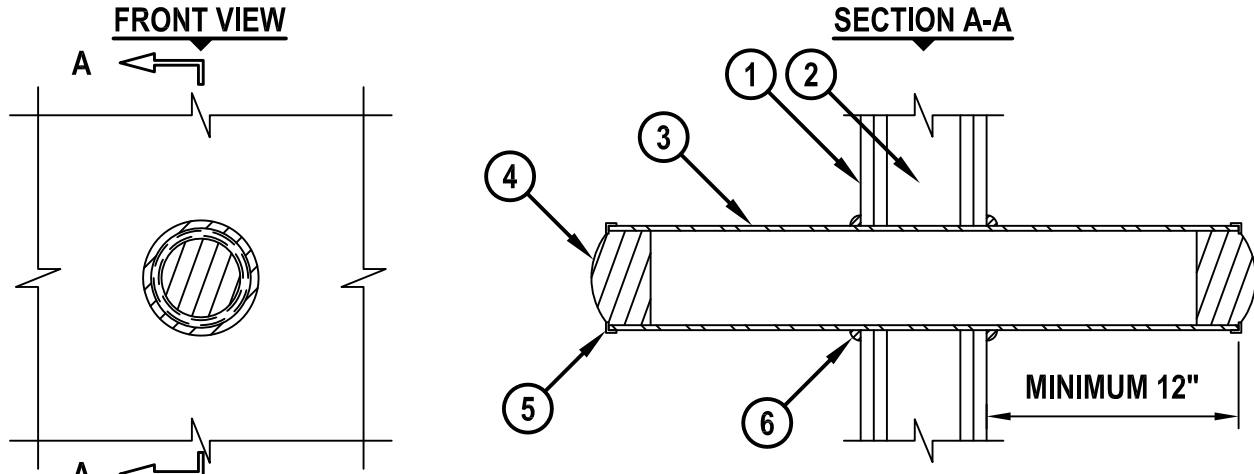
BLANK OPENING THROUGH GYPSUM WALL ASSEMBLY

F-RATING = 1-HR. OR 2-HR.

T-RATING = 0-HR.

L-RATING AT AMBIENT = LESS THAN 1 CFM / SQ FT

L-RATING AT 400°F = LESS THAN 1 CFM / SQ FT



WL0013d.011515

1. GYPSUM WALL ASSEMBLY (UL/cUL CLASSIFIED U300, U400, OR V400 SERIES) (1-HR. OR 2-HR. FIRE-RATING) (2-HR. SHOWN).
2. [NOT SHOWN] WOOD STUDS TO CONSIST OF NOMINAL 2" x 4" LUMBER. STEEL STUDS TO BE MINIMUM 3-1/2" WIDE.
3. MAXIMUM 4" NOMINAL DIAMETER THREADED STEEL CONDUIT FRICTION FITTED INTO WALL, EXTENDING MINIMUM 12" BEYOND EACH WALL SURFACE. STEEL SLEEVE TO BE RIGIDLY SUPPORTED ON BOTH SIDES OF WALL (SEE TABLE BELOW).
4. TWO HILTI CFS-PL FIRESTOP PLUGS OR HILTI CP 658T FIRESTOP PLUGS INSTALLED TIGHTLY WITHIN SLEEVE SUCH THAT THE OUTER CIRCUMFERENCE OF THE DOME SHAPED PLUG IS FLUSH WITH BOTH ENDS OF SLEEVE.
5. MAXIMUM 4" DIAMETER PLASTIC OR METAL BUSHING THREADED ONTO ENDS OF STEEL CONDUIT.
6. MINIMUM 1/2" BEAD HILTI FS-ONE MAX OR FS-ONE INTUMESCENT FIRESTOP SEALANT APPLIED AT POINT OF CONTACT.

SLEEVE/OPENING DIAM IN. (MM)	NOM PLUG SIZE, IN. (MM)	
	CP 658T	CFS-PL
1-1/2 (38)	2.5 (63) *	2 (51) *
2 (51)	2.5 (63) *	2 (51)
3 (76)	4 (102) *	4 (102) *
4 (102)	4 (102)	4 (102)

* CUT WEDGE FROM PLUG TO FIT SLEEVE/OPENING SIZE. SEE HILTI INSTALLATION INSTRUCTIONS FOR SPECIFIC SIZE OF WEDGE CUTS REQUIRED.

NOTE : NOMINAL DIAMETER OF OPENING = 1-1/2", 2", 3", OR 4".

 Hilti Firestop Systems	HILTI, Inc. Tulsa, Oklahoma USA (800) 879-8000	Sheet 1 of 1	Drawing No. WL 0013d
		Scale 7/64" = 1"	
		Date Jan. 15, 2015	
Saving Lives through Innovation and Education			