

METALLIC PIPE THROUGH GYPSUM WALL ASSEMBLY

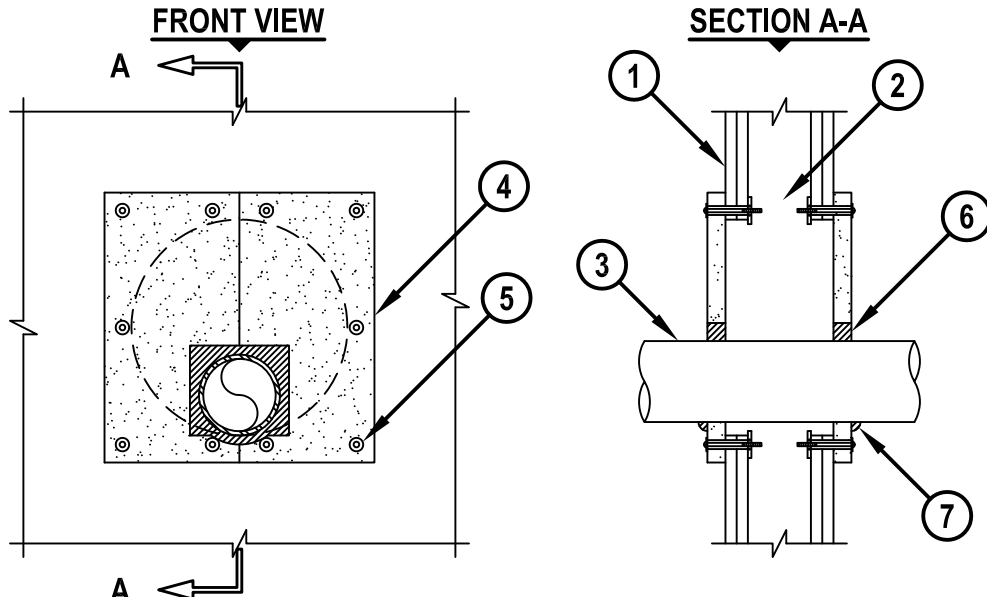
F-RATING = 1-HR. OR 2-HR.

L-RATING AT AMBIENT = LESS THAN 1 CFM / SQ. FT

T-RATING = 1/4-HR.

L-RATING AT 400°F = LESS THAN 1 CFM / SQ FT

WL1365c.011215



1. GYPSUM WALL ASSEMBLY (UL/cUL CLASSIFIED U300, U400, OR V400 SERIES) (1-HR. OR 2-HR. FIRE-RATING) (2-HR. SHOWN).
2. [NOT SHOWN] WOOD STUDS TO CONSIST OF NOMINAL 2" x 4" LUMBER. STEEL STUDS TO BE MINIMUM 3-1/2" WIDE.
3. PENETRATING ITEM TO BE ONE OF THE FOLLOWING :
 - A. MAXIMUM 8" NOMINAL DIAMETER STEEL PIPE (SCHEDULE 10 OR HEAVIER).
 - B. MAXIMUM 8" NOMINAL DIAMETER CAST IRON OR DUCTILE IRON PIPE.
 - C. MAXIMUM 4" NOMINAL DIAMETER COPPER PIPE OR TUBING.
 - D. MAXIMUM 6" NOMINAL DIAMETER STEEL CONDUIT.
 - E. MAXIMUM 4" NOMINAL DIAMETER EMT.
4. HILTI CP 675T FIRESTOP BOARD CUT TO OVERLAP OPENING MINIMUM 1" ON ALL SIDES. POSITION TWO PIECES OF BOARD AROUND PENETRANT WITH CUT EDGES TIGHTLY BUTTED (SEE NOTE 3 & 4 BELOW).
5. FASTEN HILTI CP 675T FIRESTOP BOARD TO WALL WITH 1/4" x 3" LONG HILTI TOGGLER BOLTS AND 3/4" DIAMETER WASHERS AT EACH CORNER OF EACH CUT BOARD AND MAXIMUM 6" O.C. AROUND PERIMETER OF FIRESTOP BOARD ON BOTH SIDES OF WALL.
6. MINIMUM 1" DEPTH HILTI FS-ONE MAX OR FS-ONE INTUMESCENT FIRESTOP SEALANT APPLIED IN ANNULAR SPACE BETWEEN PENETRANT AND FIRESTOP BOARD.
7. MINIMUM 1/2" BEAD HILTI FS-ONE MAX OR FS-ONE INTUMESCENT FIRESTOP SEALANT APPLIED AT POINT OF CONTACT BETWEEN PENETRANT AND FIRESTOP BOARD.

NOTES : 1. MAXIMUM DIAMETER OF OPENING = 16-7/8".
 2. ANNULAR SPACE BETWEEN PENETRANTS AND OPENING = MINIMUM 0", MAXIMUM 7-7/8".
 3. CUT FIRESTOP BOARD TO RECTANGULAR SHAPE, TO WITHIN 1" OF PENETRANT.
 4. APPLY MINIMUM 1/2" BEAD HILTI FS-ONE MAX OR FS-ONE INTUMESCENT FIRESTOP SEALANT TO CUT EDGES OF BOARD PRIOR TO BUTTING PIECES TOGETHER AND FASTENING TO WALL.



HILTI, Inc.
 Tulsa, Oklahoma USA (800) 879-8000

Sheet	1 of 1
Scale	3/32" = 1"
Date	Jan. 12, 2015

Drawing No.
WL
1367c