

INSULATED PIPE THROUGH GYPSUM WALL ASSEMBLY

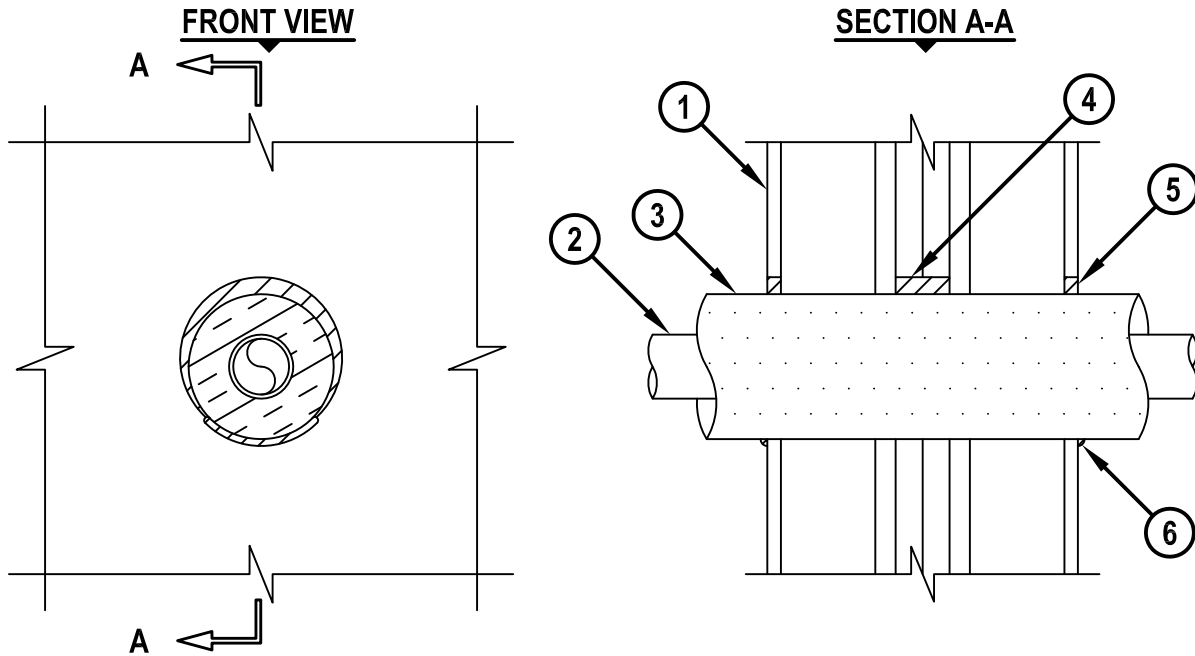
F-RATING = 2-HR.

T-RATING = 2-HR.

L-RATING AT AMBIENT = 4 CFM / SQ FT

L-RATING AT 400°F = LESS THAN 1 CFM / SQ FT

WL5259c.073010



1. GYPSUM WALL ASSEMBLY (UL/cUL CLASSIFIED U300 SERIES) (2-HR. FIRE-RATING) CONSISTING OF THE FOLLOWING :

- A. NOMINAL 2 x 4 STUDS SPACED MAXIMUM 24" OC.
- B. STEEL "H" SHAPED STUDS SPACED MAXIMUM 24" OC.
- C. TWO LAYERS 1" GYPSUM WALLBOARD LINER PANELS.
- D. MINIMUM 1/2" THICK GYPSUM WALLBOARD.

2. PENETRATING ITEM TO BE ONE OF THE FOLLOWING :

- A. MAXIMUM 2" NOMINAL DIAMETER STEEL PIPE (SCHEDULE 5 OR HEAVIER).
- B. MAXIMUM 2" NOMINAL DIAMETER CAST OR DUCTILE IRON PIPE.
- C. MAXIMUM 2" NOMINAL DIAMETER COPPER PIPE OR TUBING.

3. NOMINAL 1-1/2" THICK GLASS-FIBER PIPE INSULATION.

4. MINIMUM 2" DEPTH HILTI FS-ONE MAX OR FS-ONE INTUMESCENT FIRESTOP SEALANT APPLIED WITHIN GYPSUM WALLBOARD LINER PANELS.

5. MINIMUM 1/2" DEPTH HILTI FS-ONE MAX OR FS-ONE INTUMESCENT FIRESTOP SEALANT APPLIED FLUSH WITH OUTER SURFACES OF GYPSUM WALLBOARD.

6. MINIMUM 1/4" BEAD HILTI FS-ONE MAX OR FS-ONE INTUMESCENT FIRESTOP SEALANT APPLIED AT POINT OF CONTACT AT OUTER SURFACE OF GYPSUM WALLBOARD.

NOTES : 1. MAXIMUM DIAMETER OF OPENING = 6".
 2. ANNULAR SPACE = MINIMUM 0", MAXIMUM 7/8".



HILTI, Inc.
 Tulsa, Oklahoma USA (800) 879-8000

Sheet	1 of 1
Scale	9/64" = 1"
Date	July 30, 2010

Drawing No.

**WL
5259c**