

**FIRE-RATED JOINT THROUGH CONCRETE WALL ASSEMBLY**

**ASSEMBLY RATING = 2-HR.**

**CLASS II MOVEMENT CAPABILITIES - 7% COMPRESSION OR EXTENSION**

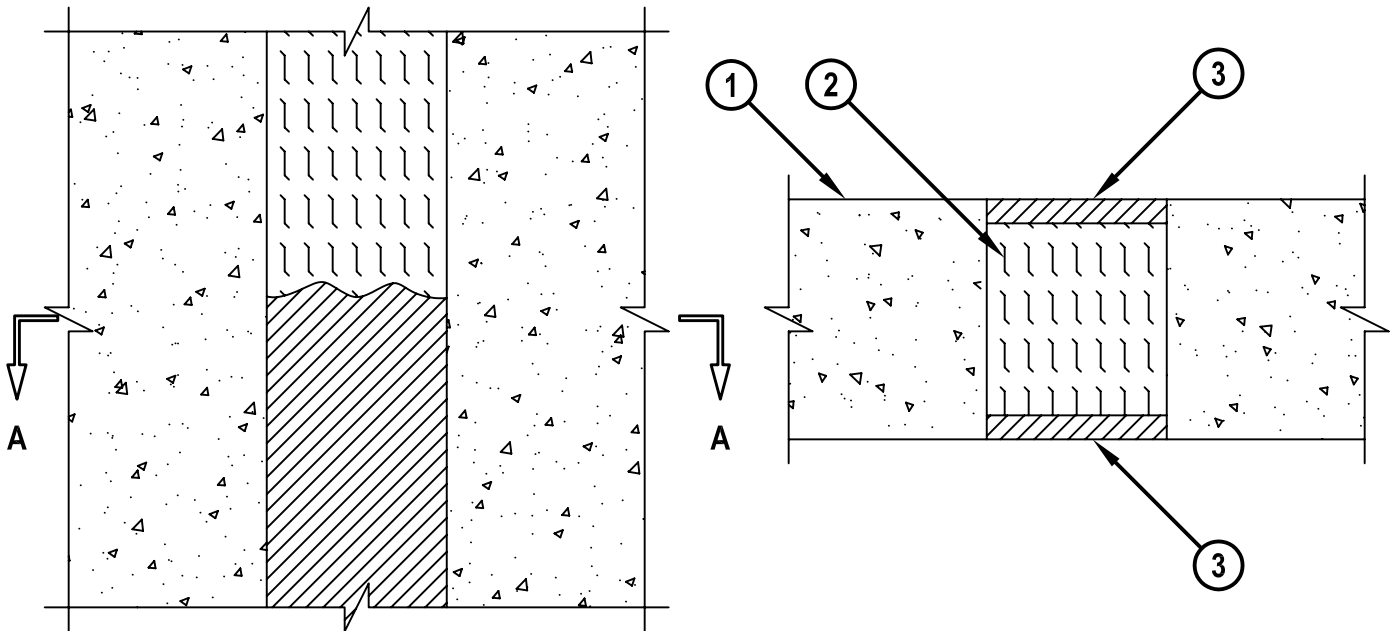
**L-RATING AT AMBIENT - LESS THAN 1 CFM/LINEAR FOOT**

**L-RATING AT 400° F - LESS THAN 1 CFM/LINEAR FOOT**

WWD1012f.063003

**FRONT VIEW**

**SECTION A-A**



1. CONCRETE WALL ASSEMBLY (2-HR. FIRE-RATING) :
  - A. LIGHTWEIGHT OR NORMAL WEIGHT CONCRETE WALL (MIN. 5" THICK).
  - B. ANY UL/ULC CLASSIFIED CONCRETE BLOCK WALL.
2. MINIMUM 4" THICKNESS MINERAL WOOL (MIN. 4 PCF DENSITY) COMPRESSED MINIMUM 42%.
3. MINIMUM 1/2" DEPTH HILTI CP 606 FLEXIBLE FIRESTOP SEALANT.

**NOTE : MAXIMUM WIDTH OF JOINT = 3-3/4".**



HILTI, Inc.  
Tulsa, Oklahoma USA (918) 252-6000

Sheet	1 of 1
Scale	1/4" = 1"
Date	June 30, 2003

Drawing No.  
**WWD  
1012f**