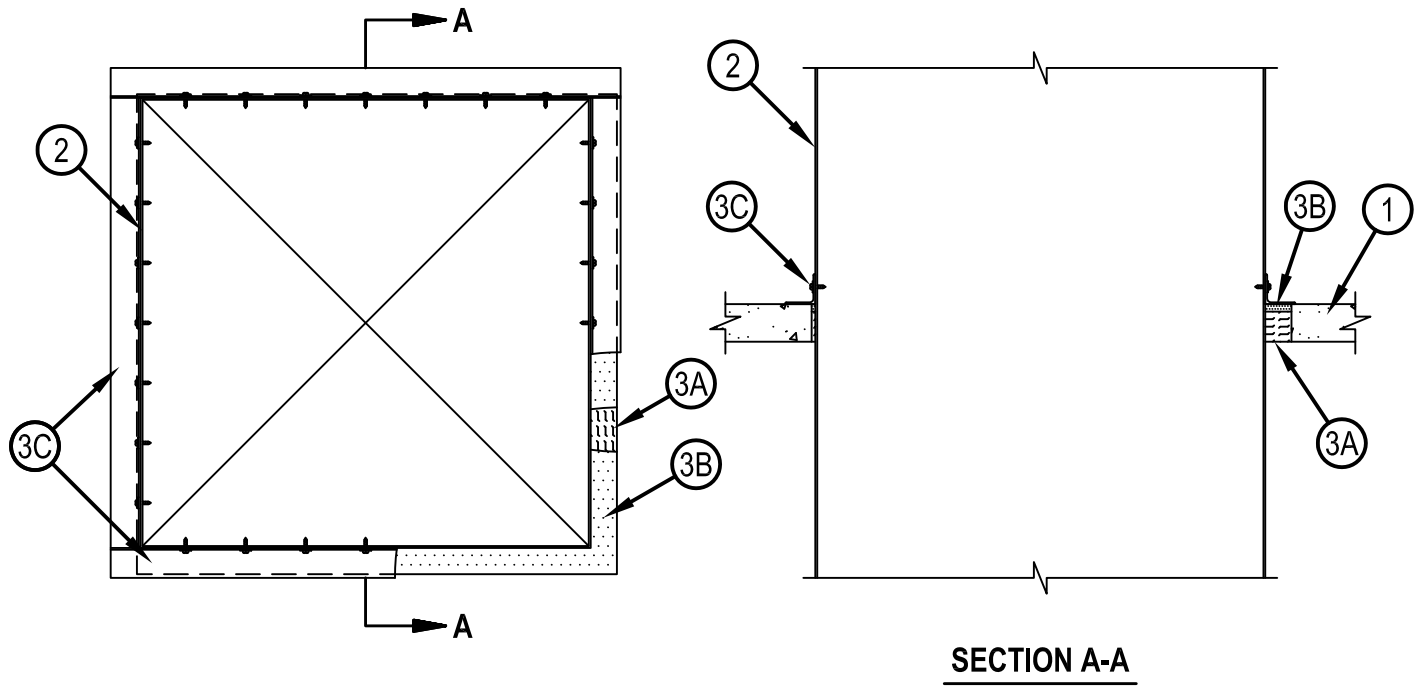


System No. C-AJ-7111

CLASSIFIED

 C US
 Classified by
 Underwriters Laboratories, Inc.
 to UL 1479 and CAN/ULC-S115

ANSI/UL1479 (ASTM E814)	CAN/ULC S115
F Rating — 2 Hr	F Rating — 2 Hr
T Rating — 0 Hr	FT Rating — 0 Hr
	FH Rating — 2 Hr
	FTH Rating — 0 Hr



1. Floor or Wall Assembly — Min 2-1/2 in. (64 mm) thick reinforced lightweight or normal weight (100-150 pcf or 1600-2400 kg/m³) concrete floor or min 3 in. (76 mm) thick reinforced lightweight or normal weight (100-150 pcf or 1600-2400 kg/m³) concrete wall. Wall may also be constructed of any UL Classified Concrete Blocks*. Max area of opening is 7.1 sq ft (0.66 m²) with max dimension of 32 in. (813 mm).
 See Concrete Blocks (CAZT) category in the Fire Resistance Directory for names of manufacturers.
2. Steel Duct — Max 30 by 30 in. (762 by 762 mm) No. 24 gauge (or heavier) steel duct. One duct to be installed within the firestop system with a min 1/4 in. (6 mm) to max 1-3/4 in. (44 mm) annular space. Steel duct to be rigidly supported on both sides of floor or wall assembly.
3. Firestop System — The firestop system shall consist of the following:
 - A. Packing Material — Min 2 in. (51 mm) thickness of min 4 pcf (64 kg/m³) mineral wool batt insulation firmly packed into opening as a permanent form. Packing material to be recessed from top surface of floor or from both surfaces of wall as required to accommodate the required thickness of fill material.
 - B. Fill, Void or Cavity Material* — Sealant — Min 1/2 in. (13 mm) thickness of fill material applied within the annulus, flush with top surface of floor or with both surfaces of wall.
 HILTI CONSTRUCTION CHEMICALS, DIV OF HILTI INC — FS-One Sealant or FS-ONE MAX Intumescent Sealant.
 - C. Steel Angle — Min 2 in. (51 mm) wide by 2 in. (51 mm) high No. 16 gauge (or heavier) steel angle cut to fit the contour of the duct with a min 1/4 in. (6 mm) lap on the top surface of floor or on both surfaces of wall on all sides of the opening. Legs of angles secured to duct with No. 8 by 3/4 in. (19 mm) long steel sheet metal screws spaced max 4 in. (102 mm) OC.

* Indicates such products shall bear the UL or cUL Certification Mark for jurisdictions employing the UL or cUL Certification (such as Canada), respectively.



Reproduced by HILTI, Inc. Courtesy of
 Underwriters Laboratories, Inc.
 January 14, 2015