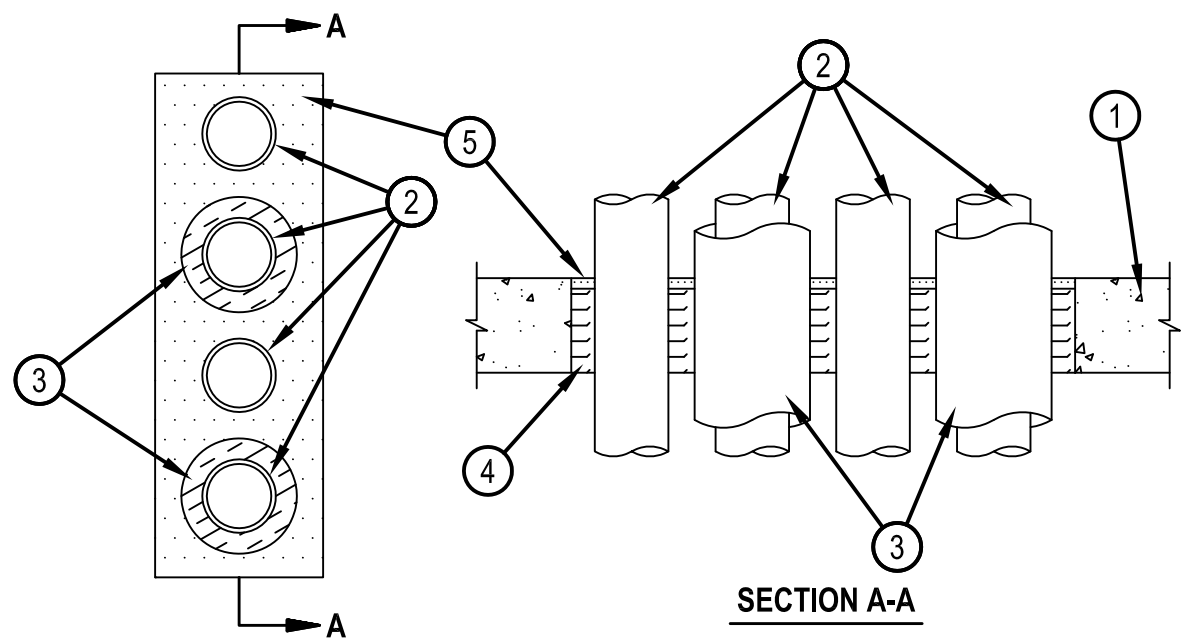


System No. C-AJ-8041



Classified by Underwriters Laboratories, Inc. to UL 1479 and CAN/ULC-S115

ANSI/UL1479 (ASTM E814)	CAN/ULC S115
F Rating — 3 Hr	F Rating — 3 Hr
T Ratings — 0 and 1 Hr (See Item 3)	FT Ratings — 0 and 1 Hr (See Item 3)
L Rating At Ambient — 10 CFM/sq ft	FH Rating — 3 Hr
L Rating At 400 F — 6 CFM/sq ft	FTH Ratings — 0 and 1 Hr (See Item 3)
	L Rating At Ambient — 10 CFM/sq ft
	L Rating At 400 F — 6 CFM/sq ft



Reproduced by HILTI, Inc. Courtesy of Underwriters Laboratories, Inc. January 15, 2015

1. Floor or Wall Assembly — Min 4-1/2 in. (114 mm) thick reinforced lightweight or normal weight (100-150 pcf or 1600-2400 kg/m³) concrete floor or min 5 in. (127 mm) thick reinforced lightweight or normal weight (100-150 pcf or 1600-2400 kg/m³) concrete wall. Wall may also be constructed of any UL Classified Concrete Blocks*. Max area of opening is 192 sq in. (1239 cm²) with max dimension of 24 in. 9610 mm).

See Concrete Blocks (CAZT) category in the Fire Resistance Directory for names of manufacturers.

2. Through-Penetrants — A max of 4 pipes, conduits or tubing to be installed within the opening. The space between pipes, conduits or tubing shall be 1-1/2 in. (38 mm). The space between pipes, conduits or tubing and periphery of opening shall be min 1-5/8 in. (41 mm) to max 2-1/2 in. (64 mm). Pipe, conduit or tubing to be rigidly supported on both sides of floor or wall assembly. The following types and sizes of metallic pipes, conduits or tubing may be used:

- A. Steel Pipe — Nom 3 in. (76 mm) diam (or smaller) Schedule 10 (or heavier) steel pipe.
- B. Copper Tubing — Nom 3 in. (76 mm) diam (or smaller) Type L (or heavier) copper tubing.
- C. Copper pipe — Nom 3 in. (76 mm) diam (or smaller) regular (or heavier) copper pipe.
- D. Conduit — Nom 3 in. (76 mm) diam (or smaller) electrical metallic tubing or steel conduit.

3. Pipe Covering* — (Optional) — Max 1 in. (25 mm) thick hollow cylindrical heavy density (min 3.5 pcf) glass fiber units jacketed on the outside with an all service jacket. Longitudinal joints sealed with metal fasteners or factory-applied self-sealing lap tape. Transverse joints secured with metal fasteners or with butt strip tape supplied with the product. A nom annular space of 1-1/2 in. (38 mm) is required within the firestop system. The T, FT and FTH Rating is 1 hr when 1 in. thick pipe covering is used. The T, FT and FTH Rating is 0 hr when pipe covering is less than 1 in. or is omitted.

See Pipe and Equipment Covering — Materials (BRGU) category in the Building Materials Directory for names of manufacturers. Any pipe covering material meeting the above specifications and bearing the UL Classification Marking with a Flame Spread Index of 25 or less and a Smoke Developed Index of 50 or less may be used.

4. Packing Material — Min 4 in. (102 mm) thickness of min 4.0 pcf (64 kg/m³) mineral wool batt insulation firmly packed into opening as a permanent form. Packing material to be recessed from top surface of floor or from both surfaces of wall as required to accommodate the required thickness of fill material.

5. Fill, Void or Cavity Material* — Sealant — Min 1/2 in. (13 mm) thickness of fill material applied within the annulus, flush with top surface of floor or with both surfaces of wall.

HILTI CONSTRUCTION CHEMICALS, DIV OF HILTI INC — FS-One Sealant or FS-ONE MAX Intumescent Sealant.

* Indicates such products shall bear the UL or cUL Certification Mark for jurisdictions employing the UL or cUL Certification (such as Canada), respectively.

