

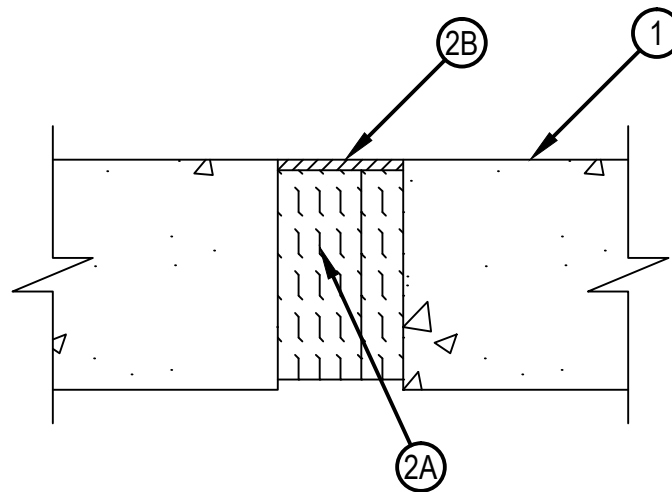


Classified by  
Underwriters Laboratories, Inc.  
to UL 2079 and CAN/ULC-S115

## System No. FF-D-1125

FFD 1125

ANSI/UL2079	CAN/ULC S115
Assembly Rating — 4 Hr	F Rating — 4 Hr
Nominal Joint Width - 3 In.	FT Rating — 4 Hr
Class II Movement Capabilities — 12.5% Compression or Extension	FH Rating — 4 Hr
L Rating at Ambient - Less than 1 CFM/Lin Ft	FTH Rating — 4 Hr
L Rating at 400 F - Less than 1 CFM/Lin Ft	Nominal Joint Width - 3 In.
	Class II Movement Capabilities — 12.5% Compression or Extension
	L Rating at Ambient - Less than 1 CFM/Lin Ft
	L Rating at 400 F - Less than 1 CFM/Lin Ft



1. Floor Assembly — Min 5-1/2 in. (140 mm) thick reinforced lightweight or normal weight (100-150 pcf (1600-2400 kg/cu meter)) structural concrete.
2. Joint System — Max width of joint (at time of installation of joint) is 3 in. (76 mm). The joint system is designed to accommodate a max 12.5 percent compression or extension from its installed width. The joint system shall consist of the following:
  - A. Forming Material\* — Min 4.0 pcf (64 kg/cu meter) mineral wool batt insulation installed in joint opening as a permanent form. Pieces of batt cut to min width of 5 in. (127 mm) and installed edge-first into joint opening, parallel with joint direction, such that batt sections are compressed min 50 percent in thickness and such that the compressed batt sections are recessed from top surface of floor to accommodate the required thickness of fill material.  
ROCK WOOL MANUFACTURING CO — Delta Safing Board  
IIG MINWOOL L L C — MinWool-1200 Safing  
THERMAFIBER INC — SAF Mineral Wool
  - B. Fill, Void or Cavity Material\* — (Caulk) — Min 1/4 in. (6 mm) thickness of fill material applied within the joint, flush with top surface of floor.  
HILTI CONSTRUCTION CHEMICALS, DIV OF HILTI INC — CFS-S SIL GG or CFS-S SIL SL

\*Bearing the UL Classification Mark



**Hilti Firestop Systems**

Reproduced by HILTI, Inc. Courtesy of  
Underwriters Laboratories, Inc.  
December 26, 2013